

# HeartFelt®

Modular felt  
Wall & Ceiling  
system



reddot award 2017  
best of the best

HunterDouglas   
Architectural



# HeartFelt®

The ceiling that *had* to be made

## Design as a source of inspiration

Felt making has been a popular method of creating textiles for thousands of years. Felt's unique, tough structure and soft appearance means that designers continue to view felt as an intriguing material for clothing, furniture, fashion accessories and household items. Inspired by both felt and designers,

Hunter Douglas Architectural created the ceiling that had to be made: HeartFelt®. A modular felt ceiling system with incredible acoustics and a unique appearance. A design that delights both eyes and ears and has sustainability at its core.

## For improved learning, working and healthcare

HeartFelt® is an innovative, patented product that turns every ceiling into a visual and acoustic playground. The felt panels are available in five beautiful grey shades and five magnificent earth tones which can be easily clipped into the carriers, at varying centres. This makes it possible to perfectly adapt the visual and functional properties of the ceiling to meet the needs of the Architect, Interior Designer or end user. HeartFelt® conforms to all the required building certifications and the European Indoor Environmental Standard (EN 15251). This makes the HeartFelt® ceiling system particularly suited to offices and other functional properties, schools and buildings used for healthcare services.



Left and above: Restaurant 't Havenmantsje, Harlingen, the Netherlands  
Product : HeartFelt® - Linear

Coverfoto: Foyer Assurances, Leudelange, Luxembourg  
Product : HeartFelt® - Linear  
Architect : Essential Environments Luxembourg

## HeartFelt® in a nutshell

- Modular ceiling system with felt panels
- Excellent acoustic properties
- Visually integrates the walls and ceilings into the interior design
- 100% recyclable, sustainable material
- Patented product
- Patented manufacturing technology
- Cost effective
- Easy to maintain: dirt and dust resistant
- Certified:
  - European Indoor Environmental Standard EN 15251
  - C2C
  - Suitable for BREEAM and Leed
  - VOC emissions class A+, M1
  - Fire classification EN 13501-1 class B,s1,d0

CONTENTS	Page
HeartFelt® Ceiling system	2
Product properties	4
Walls / Colours	5
Installation and sustainability	6
Hunter Douglas Architectural	7

**HunterDouglas**   
Architectural



Designed to work for you



Project : Brandmasters, Oosterhout, the Netherlands  
Product : HeartFelt® - Linear  
Architect : Van Oers Weijers Architecten

## The ceiling as an acoustic mixing board

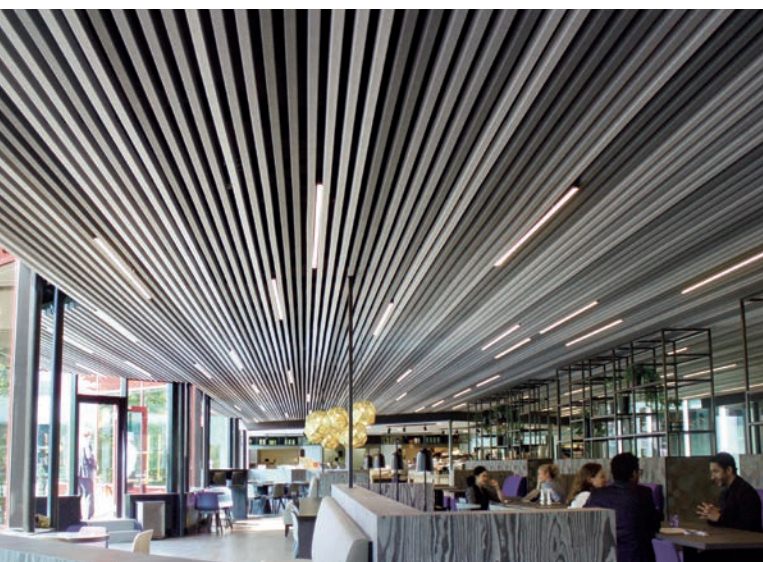
With the HeartFelt® ceiling system, Hunter Douglas is providing architects, installers and building owners with an advanced system that allows them to precisely manage the acoustics of every space. Felt's sound-absorbing properties in combination with the design of the panels, the space between the panels and the height at which the ceiling system is hung, determine how sound moves throughout the space. HeartFelt® can help to create a pleasant workspace or learning environment and contribute to increased productivity.

## The ceiling as a creative canvas

HeartFelt®'s linear felt ceiling panels are boxshaped and clip easily to the specially designed carriers. Since the panels are available in five shades of grey, ranging from white to black, and five magnificent earth tones, interesting patterns can be created. By varying the placement of the panels and the ceiling system, the ceiling is able to play a crucial role in the overall interior design.

## Ceilings as a sustainability standard

The linear felt ceiling panels that comprise HeartFelt® are made of non-woven, thermoformed PES fibers. No finishing coat is applied to the panels, making the panels 100% recyclable. The carriers (aluminium) and hangers (galvanised steel) are 100% recyclable.



Left : Amstel Building, Amsterdam, the Netherlands  
Product : HeartFelt® - Linear  
Architect : Ericis Advisors and Design

# HeartFelt® Walls

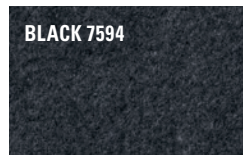
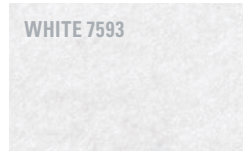
The innovative HeartFelt® ceiling system can also be applied as a wall system: every wall becomes a beautiful visual and acoustic surface. In addition, the ceiling and wall can be seen as one whole. Different options in design and variations are possible due to different colors and available modules.



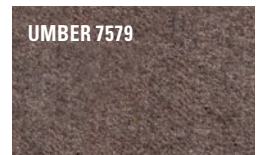
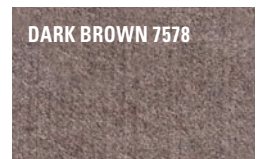
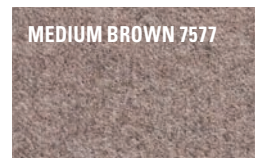
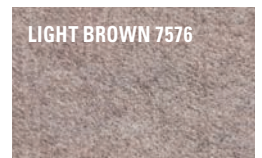
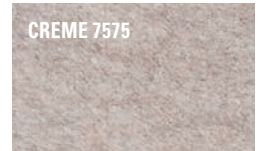
# Colours

HeartFelt® is available in five grey shades, ranging from white to black and in five earth tones. The proportion of the white, black and coloured PES fibers determines the colour of the panels.

## SHADES OF GREY



## EARTH TONES



Left : City Council Hasselt, Belgium  
Product : HeartFelt® Ceilings & Walls  
Architect: UAUcollectiv in collaboration  
with Jaspers-Eyers Architects

# Ease of installation

The HeartFelt® ceiling system's felt panels are light and clip easily to the carriers. We can manufacture panels of any desired dimensions between 1 metre and 6 metres. If required, the panels can be trimmed with a sharp knife during installation.

# Joining and finishing

The panels can be joined using a splice. The ends can be finished with an integrated end cap. This means that the HeartFelt® ceiling system can be installed both as a full ceiling and as a functional ceiling island.

# Integrated technology

The HeartFelt® ceiling system's modular nature makes it possible to integrate technology such as lighting and ventilation.

# Suspension

The carriers that the felt panels clip onto are made of coated aluminium and have a height of 52 mm. The centre-to-centre distance between each carrier is 1200 mm, while the centre-to-centre distance between each hanger is 1500 mm.

Right : Brewery Tielrode, Belgium  
Product : HeartFelt® Linear  
Architect: IO Architects

## SUSTAINABLE PROPERTIES

# C2C certification



- C2C Bronze certificate
- The product meets the 'Low' requirements for use in low-polluting buildings.

*Cradle to Cradle Certified™* is a certification mark licensed by the Cradle to Cradle Products Innovation Institute.

# Building certification

- VOC emissions class A+
- Suitable for BREEAM and Leed

# VOC emissions



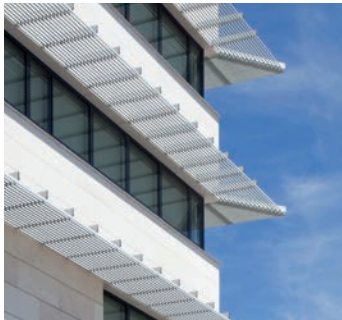
- BREEAM-Nor: approved
- M1: approved
- French regulations for CMR substances: approved

# Easy to maintain

HeartFelt®'s linear felt ceiling panels are easy to clean with a duster or vacuum cleaner.



In the last 60 years, we have been fortunate enough to help turn countless innovative ideas into products for innovative buildings. With major operation centres in Europe, North America, Latin America, Asia and Australia we contribute to thousands of high-profile projects including shopping centres, airports, government offices, hospitals, universities and offices.



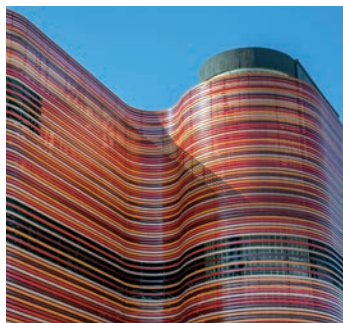
▲ SUN LOUVRES



▲ CEILINGS



▲ CEILINGS



▲ FAÇADES

## Architectural services

We support our business partners with a wide range of technical consulting and support services for architects, developers, and installers. We assist architects and developers with recommendations regarding materials, shapes and dimensions, colours and finishes.

We also help creating design proposals, visualisations, and installation drawings. Our services to installers range from providing detailed installation drawings and instructions to training installers and advising on the building site.



Hunter Douglas adopts the cradle to cradle (C2C) product philosophy to the design of products that fit the circular paradigm. They are designed for longevity, using materially healthy technical nutrients that can be reused at end of life as a high-quality source for something new.

*Cradle to Cradle Certified™* is a certification mark licensed by the Cradle to Cradle Products Innovation Institute.



*Hunter Douglas products and solutions are designed to improve indoor environmental quality and conserve energy, supporting built environments that are comfortable, healthy, productive, and sustainable.*



All aluminium products are 100% recyclable at the end of their lifecycle.



Printed on EU Ecolabel certified paper



## More information

Contact our **Project Support** for further help and advice on the design possibilities our applications can create.

Tel. +31 (0)10 - 486 99 11

Visit our website:

[www.hunterdouglasarchitectural.eu](http://www.hunterdouglasarchitectural.eu)



Ceilings



Sun Louvers



Façades

- Belgium
- Bulgaria
- Croatia / Slovenia
- Czech Republic
- Denmark
- France
- Germany
- Greece
- Hungary
- Italy
- The Netherlands
- Norway
- Poland
- Portugal
- Romania
- Russia
- Serbia
- Slovakia
- Spain
- Sweden
- Switzerland
- Turkey
- United Kingdom
- Africa
- Middle East
  
- Asia
- Australia
- Latin America
- North America

**Hunter Douglas Architectural**

Piekstraat 2  
P.O. Box 5072 - 3008 AB Rotterdam  
The Netherlands  
Tel. +31 (0)10 - 486 99 11  
Fax +31 (0)10 - 484 79 10  
[www.hunterdouglasarchitectural.eu](http://www.hunterdouglasarchitectural.eu)