

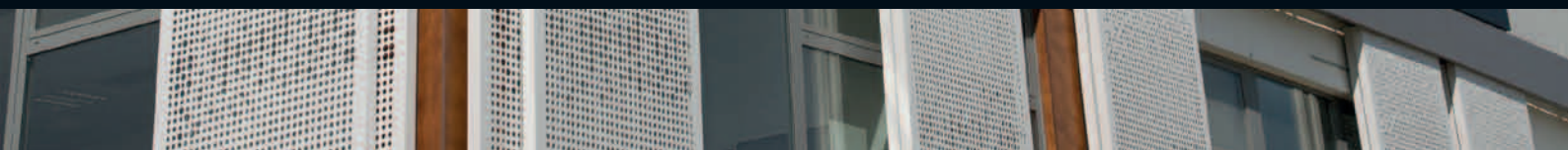


# Perforated Sliding Shutters

The HunterDouglas® Perforated Shutter is an **elegant, flexible** and **high performance** solution for external sun control. The highly durable cassette in perforated aluminum sheet metal provides the user with **optimal control** of solar heat and light and at the same time provides the architect with a beautiful tool for creating a **dynamic and attractive** façade appearance.

**HunterDouglas**

SUN CONTROL



# Perforated Sliding Shutter

Elegant, flexible and high performance



The frameless HunterDouglas® Sliding Shutter panel is offered with a choice of two perforations with a 5% or 10% openness to give the best functionality for visual and thermal interior comfort. The aluminium panels can be powdercoated in any available colour, resulting in a fully weather resistant shutter. For even greater design flexibility custom perforations or patterns may be applied.

The design of the HunterDouglas® perforated shutter was optimized and tested to achieve a simple and lightweight solution that is nevertheless a reliable application for full floor heights and under considerable wind loads. The panels come with the same proprietary runners and tracks that have already made HunterDouglas® Sliding Shutters a reliable and durable product for more than 15 years. As with any other type of sliding shutter, the perforated shutter can be manually operated or motorized with our 24V belt drive system.

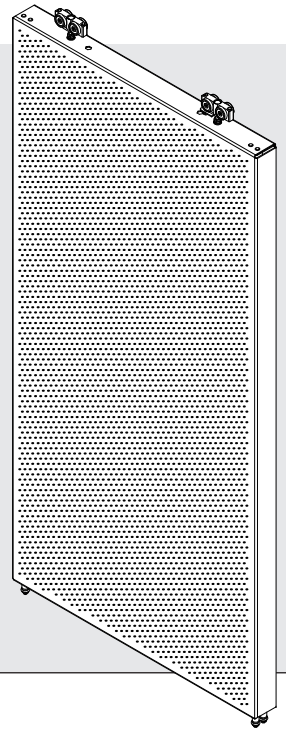


**HunterDouglas**



## PERFORATED SLIDING SHUTTER - KEY FEATURES

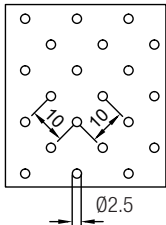
- Sliding shutter in aluminium perforated sheet
- Frameless, lightweight panel
- Perforated sheet metal filters direct sunlight, allows outward view and reduces solar radiation impact by 90%
- Totally weather resistant and maintenance free panel
- Reliable HunterDouglas® sliding accessories
- Two functional perforation options offered as standard
- Custom design perforations possible
- Unlimited choice of colours offers great design flexibility
- Manually operated or motorized



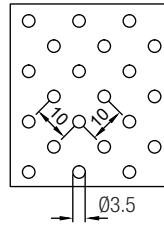
## DIMENSIONS

The maximum dimensions of the perforated sliding shutter depend on the applicable wind loads. The table on the right shows the maximum allowable wind load for different shutter widths and heights.

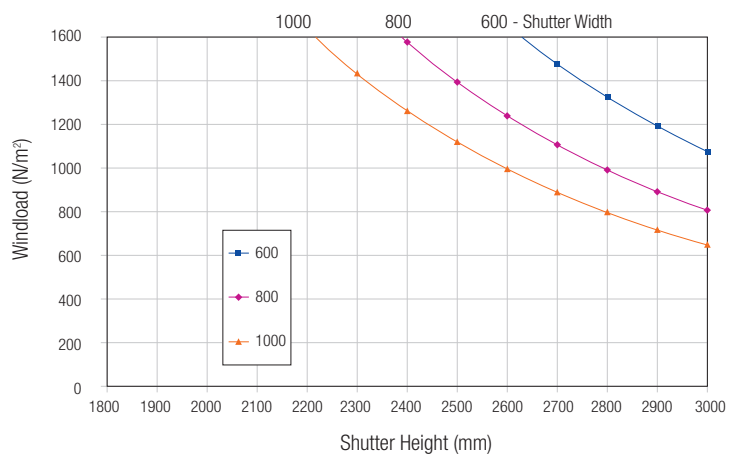
Perforation A:  
R2.5 - Z10x10  
opening 5%



Perforation B:  
R3.5 - Z10x10  
opening 10%

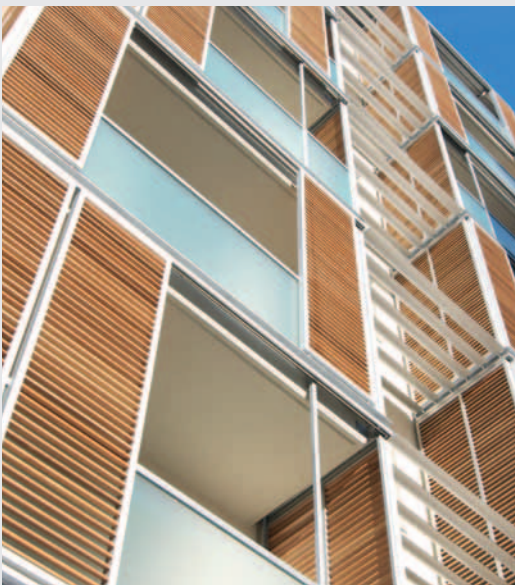


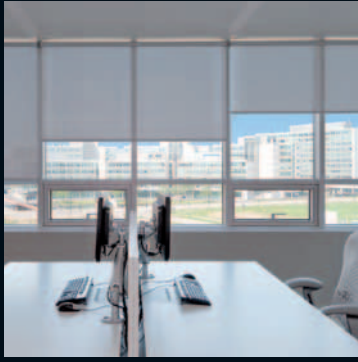
Design chart of perforated sheet sliding shutters



## OTHER SLIDING SHUTTER SOLUTIONS

Hunter Douglas has offered sliding shutters for more than 15 years. Apart from the perforated shutter the range comprises various frame types, fixed or adjustable fins in aluminium or wood, and tensioned glass fibre fabric. Other material options and custom solutions are available on request.





- Belgium
- Bulgaria
- Croatia / Slovenia
- Czechia
- Denmark
- France
- Germany
- Greece
- Hungary
- Italy
- The Netherlands
- Norway
- Poland
- Portugal
- Romania
- Russia
- Serbia
- Slovakia
- Spain
- Sweden
- Switzerland
- Turkey
- United Kingdom
- Africa
- Middle East

- Asia
- Australia
- Latin America
- North America

**HUNTER DOUGLAS EUROPE B.V.**  
2, Piekstraat  
P.O. Box 5072 - 3008 AB Rotterdam  
The Netherlands  
Tel. +31 (0)10 - 486 99 11  
Fax +31 (0)10 - 484 79 10  
[www.hunterdouglascontract.com](http://www.hunterdouglascontract.com)

# HunterDouglas

WINDOW COVERINGS | CEILING | SUN CONTROL | FAÇADES

© Registered trademark - a HunterDouglas® product Pats. & Pats.  
Pend. - Technical data subject to change without notice. © Copyright  
Hunter Douglas 2014. No rights can be derived from copy, text  
pertaining to illustrations or samples. Subject to changes in  
materials, parts, compositions, designs, versions, colours etc.,  
even without notice.