



Ultimate Screen ZIP Windproof Roller Blinds

HunterDouglas® Ultimate Screen ZIP Windproof External Roller Blinds offer a **high performance** solution for heat and light control in more than 99% of common wind conditions on sunny days. The system is engineered for **ease of installation, flexible application and long durability**. Our external fabrics are colour fast, tear, rot and heat resistant and dimensionally stable.

HunterDouglas

SUN CONTROL



Ultimate Screen ZIP Windproof Roller Blinds

The ultimate wind resistant solution

DESIGN FLEXIBILITY

HunterDouglas® Ultimate Screen ZIP Windproof External Roller Blinds help establish the look and feel of a building. From small offices to the largest towers, made-to-measure external roller blinds will enhance the comfort and appearance of any building. Recent advances in textile development have greatly increased the quality of high-performance external fabrics.

Hunter Douglas allow architects and designers to take a no-compromise approach to specifying external roller blinds that can be used when you need them, even in windy circumstances.

FUNCTIONALITY & COMFORT

HunterDouglas® Ultimate Screen ZIP Windproof External Roller Blinds feature a range of head boxes to meet the design, functionality and performance specifications of any window. Exclusive components make them simple to install, connect and operate in more than 99% of windy, sunny days with an uncompromising quality; durable and trouble-free operation.

EASY INSTALLATION

HunterDouglas® Ultimate Screen ZIP Windproof External Roller Blinds have a patented design which allows safe and easy frontal click fixation of the head box to the small pre-fixed side guiding channels and that reduces installation cost.



ENERGY & LIGHT

HunterDouglas® External Roller Blinds are designed to improve indoor environmental quality and conserve energy. These systems help create built environments that are comfortable, healthy, productive, and sustainable. Our engineering and production processes minimize embodied environmental impact while meeting the highest standards for commercial, hospitality, industrial, institutional, and commercial applications. In order to obtain the optimal shading performance for a building and its occupants we developed compute simulation and calculation tools. Our project support team can analyze, visualize and optimize Sun Control Solutions with the Hunter Douglas Energy and Light Tool.

CONTENT

Page

System 2

Head Boxes 3

System Properties 4

System Drawings 6

Special Solutions 8

Dimensions 10

Wind Loads 10 - 11

Products & Service 12 - 13

Innovative Products Make Innovative Projects



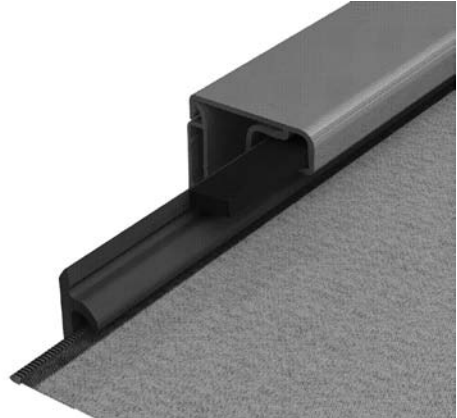
HunterDouglas

System

Hunter Douglas Ultimate Screen ZIP Windproof External Roller Blinds offer a high performance solution for heat and light control in more than 99% of common wind conditions on sunny days. The system is engineered for ease of installation, flexible application and long durability. Our external fabrics are colour fast, tear, rot and heat resistant and dimensionally stable

ULTIMATE SCREEN ZIP

Ultimate Screen ZIP External Roller Blinds are specially designed for long lasting use in situations with strong wind loads. Welded zippers on the screen fabric keep the fabric and bottom rail stable inside the side guiding profiles and ensure that the blind remains functional despite severe wind loads. It therefore also allows installation on high buildings and in corner situations with elevated wind levels. Contrary to a standard external roller blind, the screen does not need to be retracted with strong wind. This is especially important in coastal areas and regions with frequently occurring sunny and windy conditions. In addition, the ZIP screen technique prevents hindering light from lateral openings and provides protection against insects.



Screen fabric with welded zipper in side guiding channel

HEAD BOXES

The standard motorized Ultimate Screen ZIP system is available with 2 different head box sizes in 2 different shapes for dimensions up to 4,300 mm wide and 5,000 mm high (max. 15 m²). The watertight head boxes provide maximum protection against weather influences and have removable aluminium front cover profiles for easy maintenance. Last but not least, a patented design allows safe and easy frontal click fixation of the head box to pre-installed side guiding profiles.



Head box 'SQUARE' shape

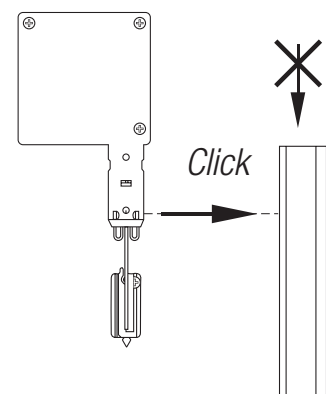


Head box 'CHAMFERED' shape

PATENT

Due to the weight and height, the installation of large motorized cassette blinds can already be a challenging task. In addition, the façade construction may hinder the standard installation of a box on top of pre-installed side guides. The patented construction of Ultimate Screen ZIP Roller Blinds allows frontal click

installation of the head box in the side guides. In face fix situations, the head box does not need to be installed on top of the side guides first. This keeps the side guiding profiles small and above all makes the Ultimate Screen ZIP Roller Blind very easy and safe to install.



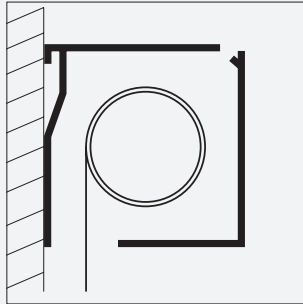
Head Boxes

Head box with invisible connection fixed to top of side guiding profiles, made of extruded aluminium, anodized or powder coated, housing the complete mechanism and screen fabric.

BOX 100 SERIES

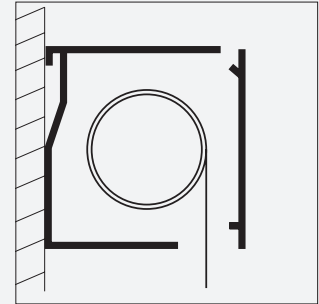
Box 100 Square Size 100 x 100 mm

- Square box shape
- 2 part back rolling
- Max. drop 3,500 mm



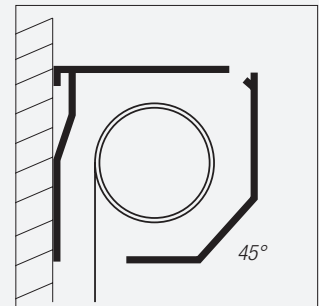
Box 100 Square Size 100 x 100 mm

- Square box shape
- 2 part front rolling
- Max drop 3,500 mm



Box 100 Chamfered Size 100 x 100 mm

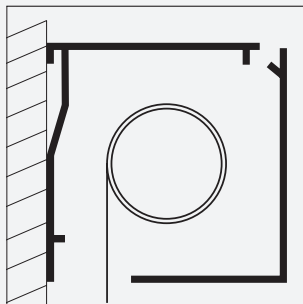
- Chamfered box shape
- 2 part back rolling
- Max. drop 3,500 mm



BOX 125 SERIES

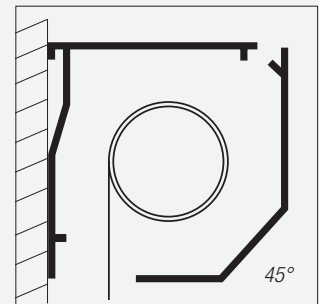
Box 125 Square Size 125 x 125 mm

- Square box shape
- 2 part back rolling
- Max. drop 5,000 mm



Box 125 Chamfered Size 125 x 125 mm

- Chamfered box shape
- 2 part back rolling
- Max. drop 5,000 mm



The aluminium head box is supplied with a plastic seal inside to

- Guide the fabric towards the side guiding channel
- Prevent contact noise with the bottom rail
- Protect the bottom rail.

Ultimate Screen ZIP Roller Blinds are standard motorized. The standard application is with Hunter Douglas motors and switch control. Upon request wireless control and alternative motors are available.



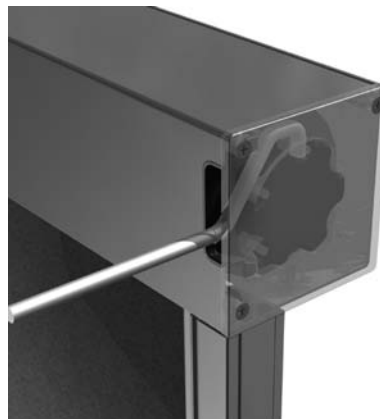
System Properties

TUBE

Ø63 or Ø78 mm external roll formed steel tube according to blind size or specification. For a strong connection the fabrics are attached to the tube with a spline.

OPERATION

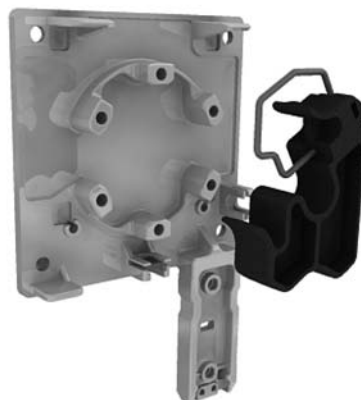
Standard maintenance free 230 V Hunter Douglas M50 electrical tubular motor, incorporated left or right in the roller tube, with switch control. Alternative motor and controls are available upon request. To allow convenient installation the head box is equipped with a resistant nylon cable housing with a large opening for a flexible motor cable exit.



Headbox with opening for flexible motor cable

END PLATES

Solid weatherproof end plates support the motor head and end bearing. They are made of a special die cast metal alloy and receive an anti-corrosive pre-treatment before being RAL powder coated in the same colour as the box, side channels and bottom bar profiles.



Colour coordinated end plates

SIDE TRACKS

Very small extruded aluminium side guiding channels of 37 x 38 mm keep the fabric and head box in position.

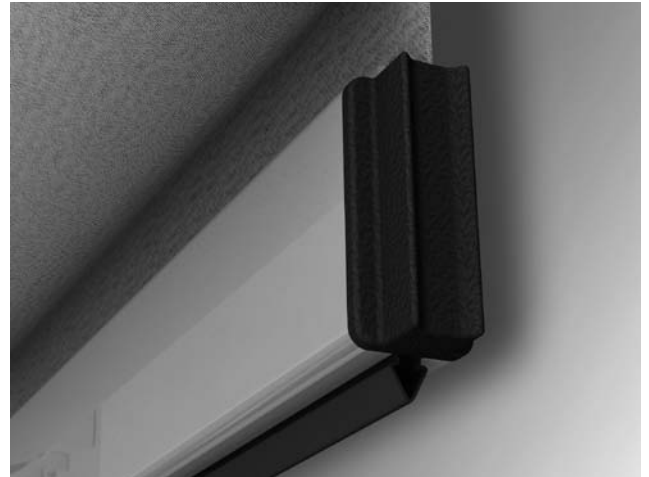
- With engineered plastic inserts for smooth fabric and bottom rail guiding.
- The seamless side guiding channels without visible screws allow quick and safe front installation of the head box.
- Fixed 'in recess' or 'on face' of the window.
- Colour coordinated with the rest of the system.



System Properties

BOTTOM BAR

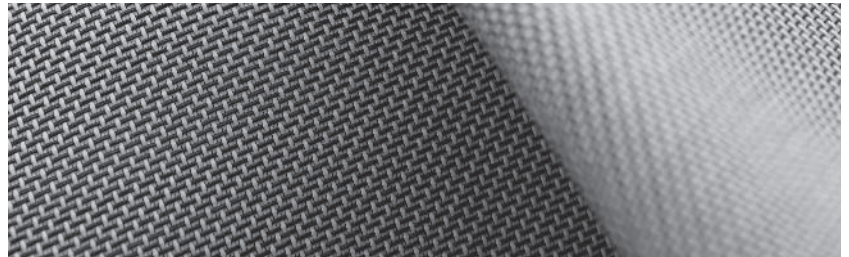
The colour coordinated bottom bar of 22 x 48 mm is made of extruded aluminium. Extra steel weights provide additional tension on the fabric to ensure free rolling under the specified wind conditions. The fabric is attached to the bottom rail with a spline. To close possible light gaps, the bottom rail is finished with a black and soft rubber seal. In rolled up position, the rail is partly concealed in the head box. All profiles and end plates are natural anodized or polyester powder coated.



Bottom bar with rubber seal

SCREEN FABRIC

Hunter Douglas screen fabrics with Enduris® glass core technology are a proprietary combination of superior-quality coatings and glass yarns, fully tested production techniques, and proven performance characteristics.



Fabrics with Enduris® glass core technology ensure outstanding strength, durability, performance and transparency for outdoor and indoor shade applications, including even the largest shades. Designed and tested for the highest levels of performance, with a wide palette of attractive designs. The screen fabrics are colourfast and provide excellent protection against UV radiation, resistant to damage from water, rot, heat and remain dimensionally stable to prevent sagging and stretching.

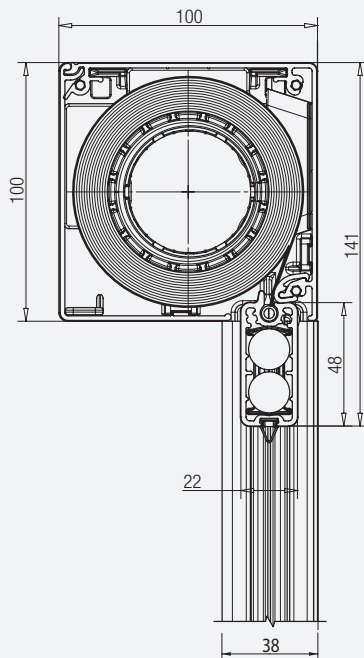
Hunter Douglas Enduris® fabrics have been installed in offices and executive suites, educational and health-care facilities, public spaces, hotels, restaurants, residential spaces and more ...

Solar-shading fabrics ('screens') made with Enduris® glass core technology are highly efficient at protecting against solar heat gain, contributing to sustainable buildings by effectively managing solar heat, diffusing incoming natural light, enhancing interior comfort and increasing occupant productivity.

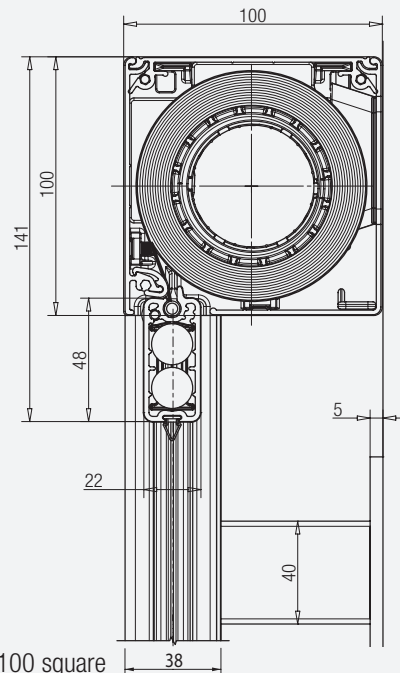
Depending on the product size fabrics will be executed with a welded joint. For more information check the collection cards and other documentation.



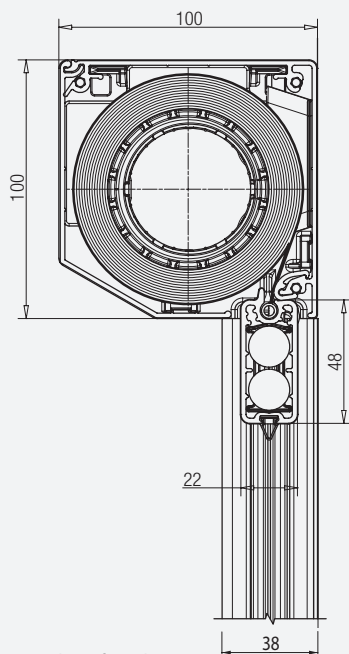
System Drawings



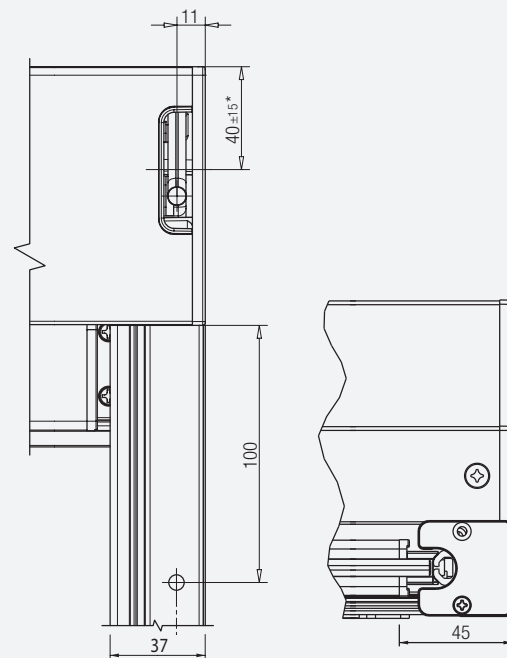
Head box 100 square
100 x 100 mm
Back roll



Head box 100 square
100 x 100 mm
Front roll with distance bracket



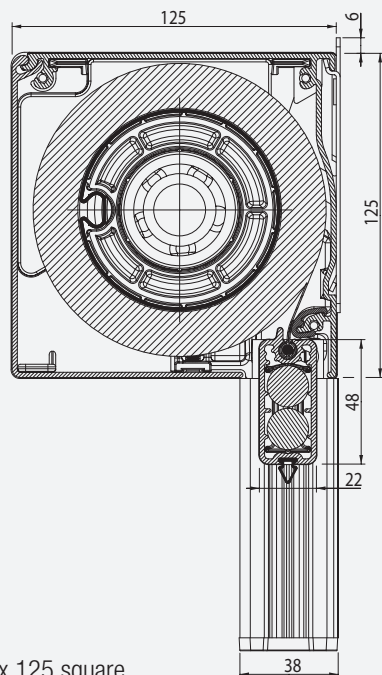
Head box 100 chamfered
100 x 100 mm
Back roll



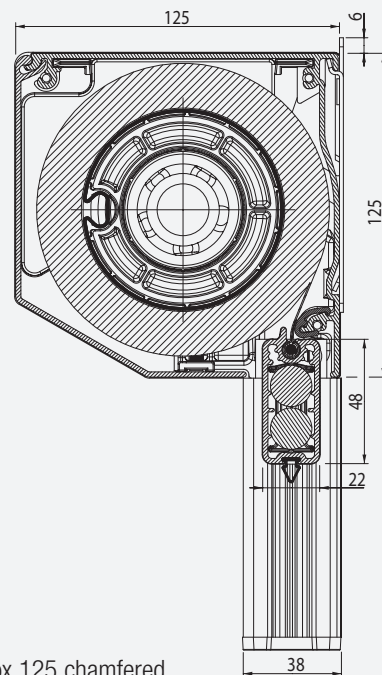
Front view

Bottom view

System Drawings

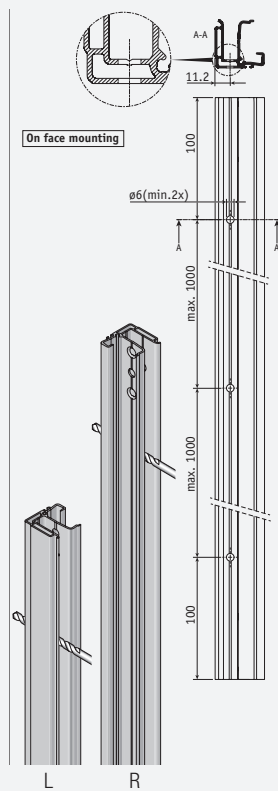


Head box 125 square
125 x 125 mm
Back roll

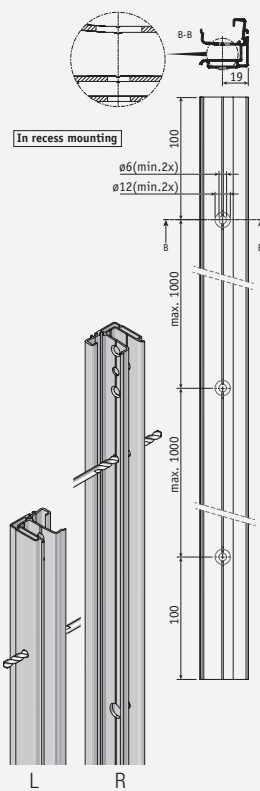


Head box 125 chamfered
125 x 125 mm
Back roll

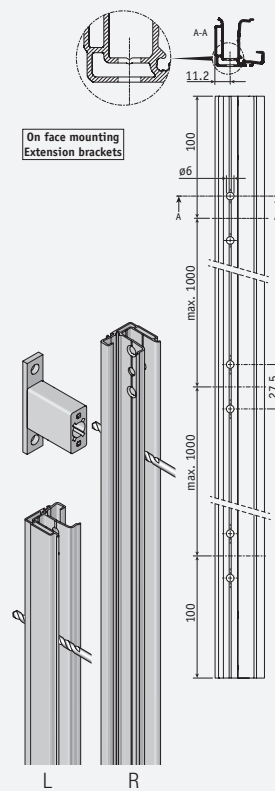
SIDE GUIDING



Face fix for back roll



Side fix in recess
for back or front roll



Face fix with distance brackets
for front roll or other applications

Special Solutions

ALTERNATIVE MOTOR OPTIONS

The wired Hunter Douglas M50S motor with 17 rpm speed is standard (see page 10). The motor strength is directly related to the size of the blind and therefore predetermined by the factory. The following alternatives are available:

Brand	Type	Speed (rpm)	Wired Control	Remote Control	Quiet	Limit Settings
Hunter Douglas	M50S (standard)	17	•			Buttons
	M50S 626	26	•		•	Buttons
	M50E	17	•			Switch
Somfy	LT 50	17	•			Buttons
	RTS Altus 50	17		•		Remote

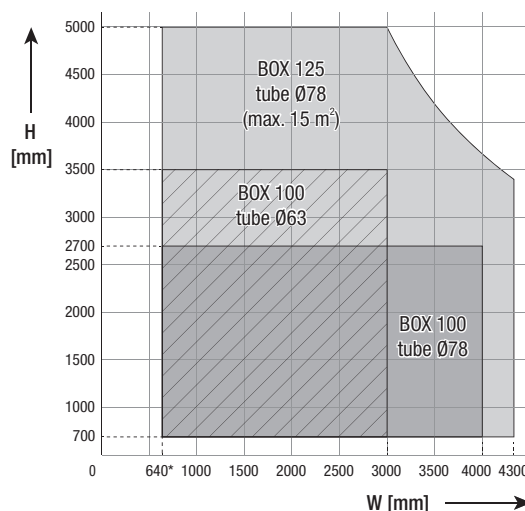
The wired control is supplied with flush or surface mounted switch according to order. Remote control is with Somfy Telis wall switch or handheld unit according to specification. Make sure that multiple radio frequency emitting devices near to each other do not interfere with each other. Switch control is recommended.

ROLLER TUBE Ø63 OR Ø78

The Ø78 mm tube is automatically applied when the height exceeds 2,700 or 3,500 mm, depending on the product width (see table). The tube diameter influences the speed with which the bottom rail is moving down and up. Adjacent screens of different heights should preferably all use the same tube diameter. Depending on the product size fabrics will be executed with a welded joint.

For more information check the collection cards and other documentation.

* Minimum width depending on motor type



SIDE GUIDING CHANNELS

For fixing with screws, the side channel profiles are provided with standard holes in accordance with the factory standard. Alternatively, the position of these holes can be made to order, or the holes can be omitted altogether. The maximum distance between two holes should never exceed 1 meter (see drawings on previous page). The side channels are standard supplied without seals. Brushes on the back of side guiding profiles, fixed with screws and filling rings in between, still allow some ventilation, block the light and protect against insects. The black brushes are available in 7 and 14 mm versions.

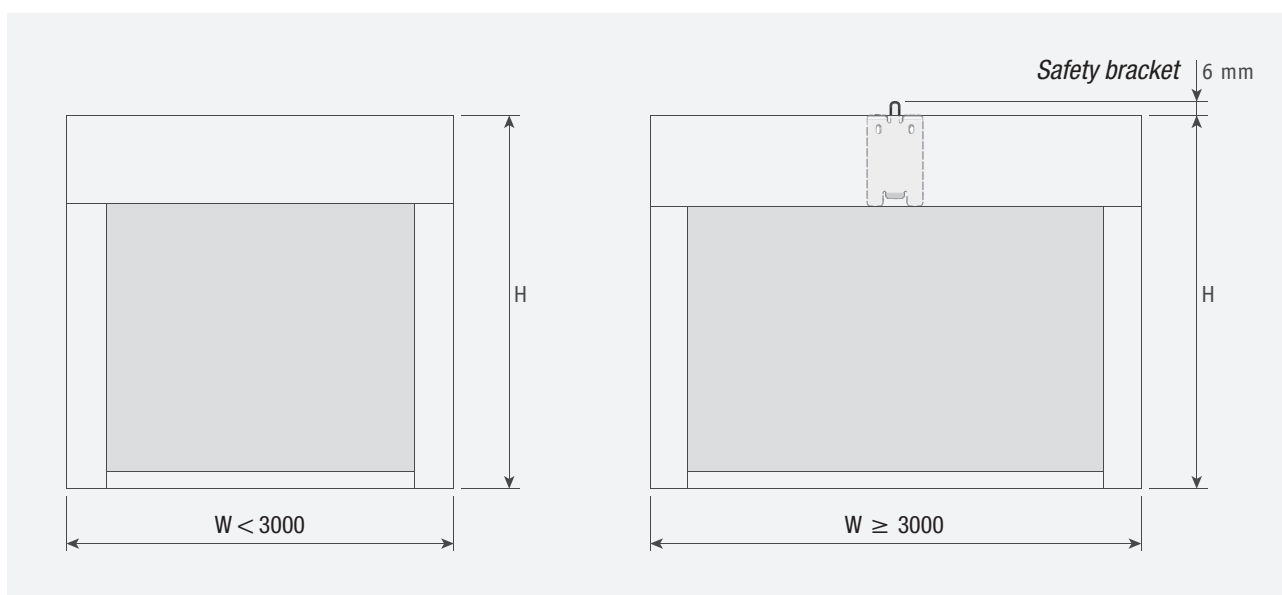
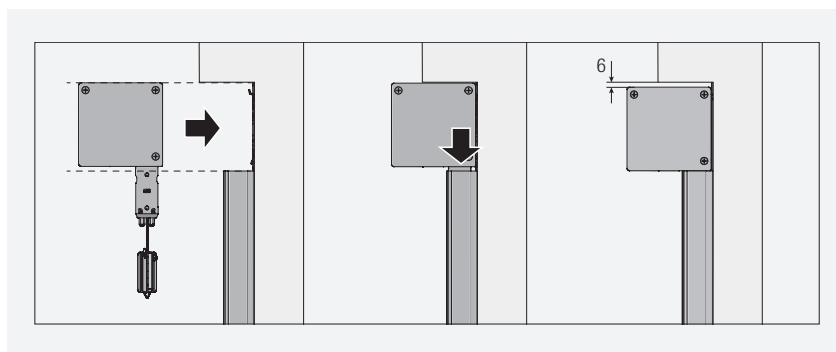


Brush on the back of side guiding profile

Special Solutions

SAFETY BRACKET

To prevent bending of the cassette, large and heavy blinds over 3,000 mm width are automatically equipped with a safety bracket. When in recess, deduct 6 mm of the measured height to ensure they fit.



COLOUR COORDINATION

The standard system colours are natural anodized aluminium profiles with RAL 9022 (Pearl light grey) coated end plates or entirely RAL 9010 (Pure white). Other RAL colours are available. Contact us for the possibilities.

Dimensions

Hunter Douglas Ultimate Screen ZIP Windproof External Roller Blinds are subject to limitations.

Box	Motor	Min. width (mm)	Max. width (mm)	Max. height (mm)	Max. surface (m ²)
100	HD M50 (standard)	650	4,000 or 3,000	2,700	10.8
	SOMFY LT 50	650			
	SOMFY RTS Altus 50	800		3,500	
125	HD M50 (standard)	650	4,300	5,000	15.0
	SOMFY LT 50	650			
	SOMFY RTS Altus 50	800			

Wind Loads

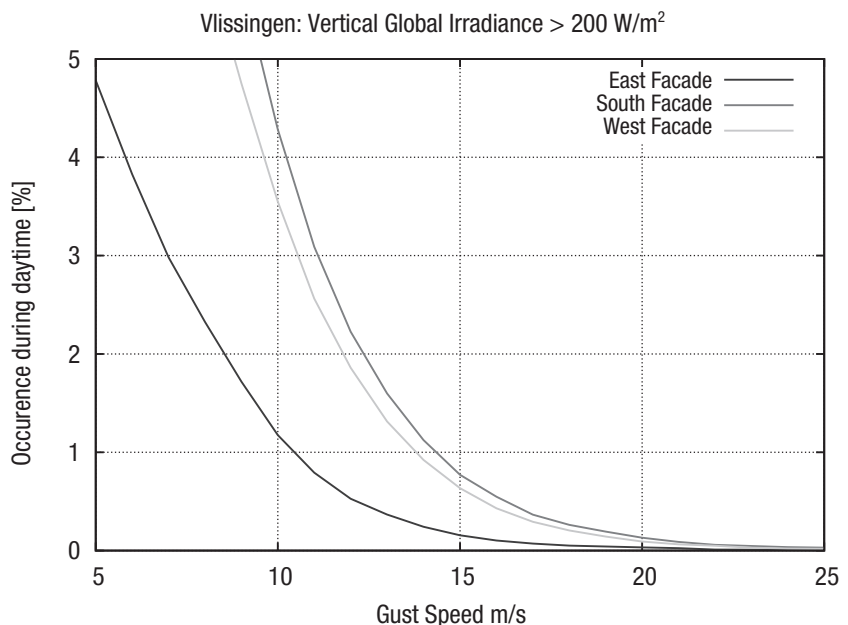
The maximum wind speed for normal External Roller Blinds is appr. 10 m/s. They are classified as so-called Class 2 products according to standard EN 13561.

Ultimate Screen ZIP Roller Blinds are Class 3 products that can withstand wind speeds up to 16.8 m/s. For test reports by TÜV according to standard EN 13561 see separately available documentation.

The time during which a screen can be used is determined by the wind gusts. A normal external roller blind can withstand gusts of up to 10 m/s. An Ultimate Screen ZIP Roller Blind can be used when gusts do not exceed 16.8 m/s. That makes a big difference in terms of usability. Therefore one has to look at the joint statistics of solar irradiance (or radiant energy) and wind speed.

How often is there a strong wind and at the same time a significant amount of solar radiation? The answer to that question is location and site specific. The graph on the right shows - as an example - the answer for the coastal town of Vlissingen in the Netherlands.

On a south façade, during 4.3% of daytime wind gusts exceed 10 m/s while at the same time solar power exceeds 200 W/m². During approximately 0.4% of daytime solar power exceeds 200 W/m² while gusts exceed 16.8 m/s, the maximum allowed wind speed for Ultimate Screen ZIP Roller Blinds. The amount of time during which a screen cannot be used due to high winds while there is a need for shading, is reduced by a factor of more than 10 when comparing a normal screen to an Ultimate Screen ZIP Roller Blind.



Impressions

*Right : Dalton School,
Leiderdorp, The Netherlands
Architect: Frencken | Scholl Architects
Product : ProScreen*



*Right : Sandakerveien 114,
Oslo, Norway
Architect: Renovation Project
Product : ProScreen*



HUNTER DOUGLAS

ARCHITECTURAL PROJECTS

For 50 years, Hunter Douglas has been dedicated to innovation. As the field of Sun Control grows, we pride ourselves on leading the way as pioneers in the area. We're working alongside architects and designers throughout the globe, discovering new, inventive methods of managing heat, light and energy.

We've committed ourselves to crafting products that meet the highest standards of materials, construction and performance because we believe that you need the right tools to create projects that inspire.



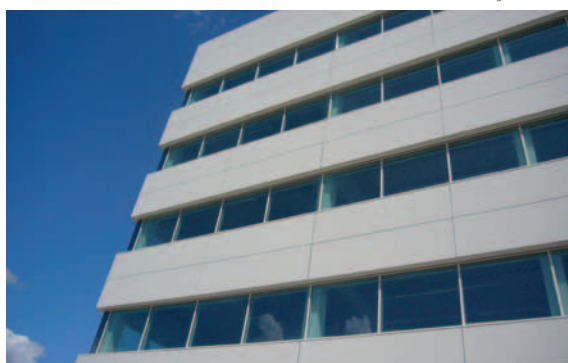
▲ WINDOW COVERINGS

SUN CONTROL ▼



▲ CEILINGS

FAÇADES ▼



Innovative Products

Make Innovative Projects

® Registered trademark - a HunterDouglas® product Pats. & Pats. Pend. - Technical data subject to change without notice. © Copyright Hunter Douglas 2015. No rights can be derived from copy, text pertaining to illustrations or samples. Subject to changes in materials, parts, compositions, designs, versions, colours etc., even without notice. **MX120B00**



HunterDouglas



ARCHITECTURAL SERVICES

We support our business partners with a wide range of technical consulting and support services for architects, developers, and installers. We assist architects and developers with recommendations regarding materials, shapes and dimensions, colours and finishes. We also help creating design proposals, visualisations, and installation drawings. Our services to installers range from providing detailed installation drawings and instructions to training installers and advising on the building site.

Learn More

- Contact our Sales office
- www.hunterdouglascontract.com



Hunter Douglas products and solutions are designed to improve indoor environmental quality and conserve energy, supporting built environments that are comfortable, healthy, productive, and sustainable.



Our paint and aluminium melting processes are considered to be one of the industry standards in terms of clean production processes. All aluminium products are 100% recyclable at the end of their lifecycle.



Belgium
Bulgaria
Croatia / Slovenia
Czechia
Denmark
France
Germany
Greece
Hungary
Italy
The Netherlands
Norway
Poland
Portugal
Romania
Russia
Serbia
Slovakia
Spain
Sweden
Switzerland
Turkey
United Kingdom
Africa
Middle East

Asia
Australia
Latin America
North America

HUNTER DOUGLAS EUROPE B.V.

2, Piekstraat
P.O. Box 5072 - 3008 AB Rotterdam
The Netherlands
Tel. +31 (0)10 - 486 99 11
Fax +31 (0)10 - 484 79 10
www.hunterdouglascontract.com

HunterDouglas

WINDOW COVERINGS

CEILINGS

SUN CONTROL

FAÇADES