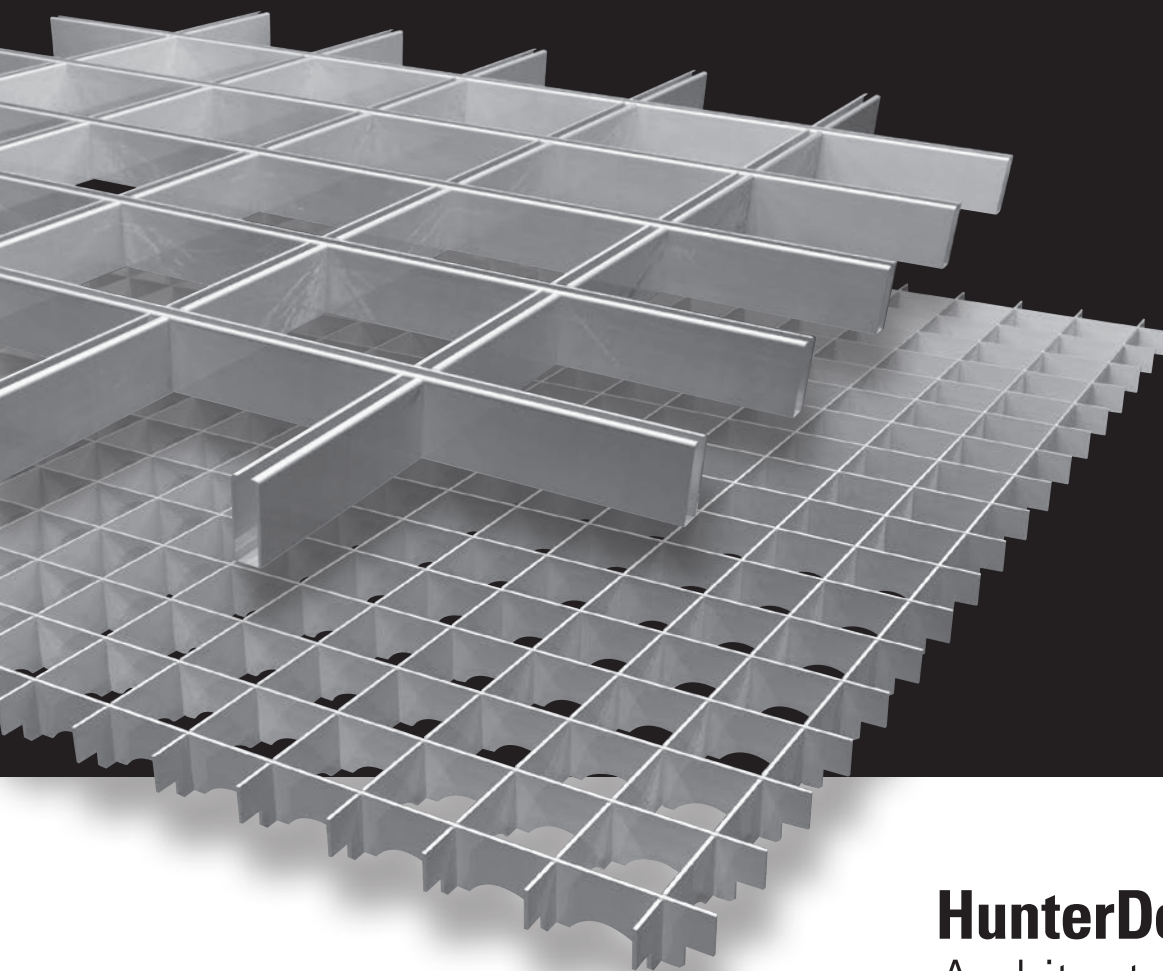


Cell 50E Ceiling

HunterDouglas® Cell Ceilings enable architects to design an open ceiling with high-performance aluminium. With a wide variety of cells and patterns, these ceilings offer maximum freedom in design.



HunterDouglas 
Architectural

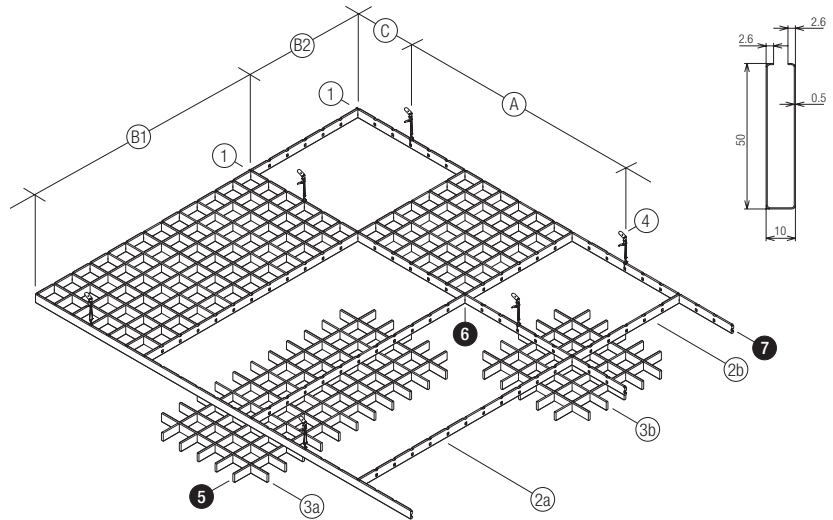
Cell 50E

PANELS

Cell 50E panels are assembled from aluminium U-profiles. They create perfect detailing of the connecting U-profiles, which are designed to conceal uncoated edges.

SUSPENSION

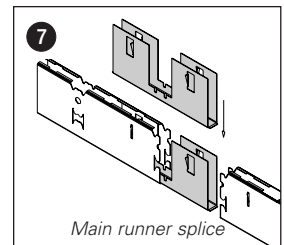
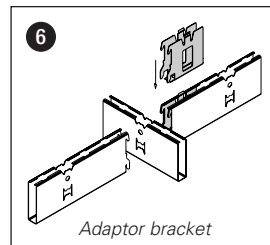
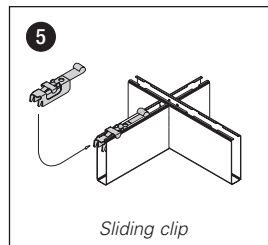
The 600 x 600 mm and 600 x 1200 mm panels feature an integrated system with main and cross runners from the same profiles as the panels. The panels are easily (de)mounted with the sliding clips.



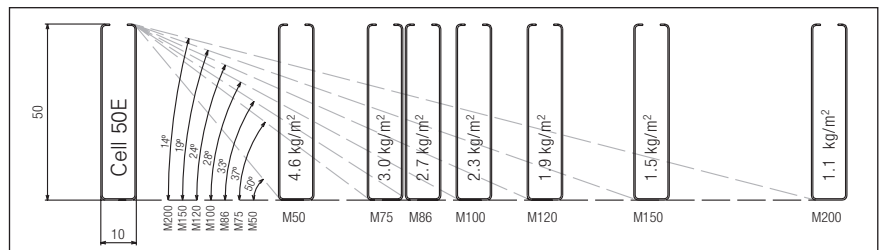
- 1 = Main runner 2400 mm
 - 2a = Cross runner 1200 mm
 - 2b = Cross runner 600 mm
 - 3a = Cell tile 1200 x 600 mm
 - 3b = Cell tile 600 x 600 mm
 - 4 = Cell hanger
- A = 1200 mm (max.)
 - B1 = Tile length (standard 1200)
 - B2 = Tile length (standard 600)
 - C = 300 mm (max.)

CONSTRUCTION DETAILS

The standard range of edge profiles can be used.



MODULES, WEIGHTS AND VIEWING ANGLES



MODULES AND HEIGHTS (Availability)

Tiles are made from 0.4 mm thick aluminium strip.

Module	Height
50 x 50	50
75 x 75	50
86 x 86	50
100 x 100	50
120 x 120	50
150 x 150	50
200 x 200	50

MATERIAL REQUIREMENT PER M²

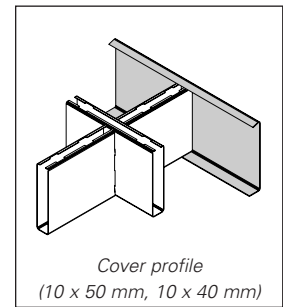
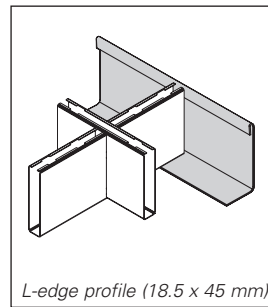
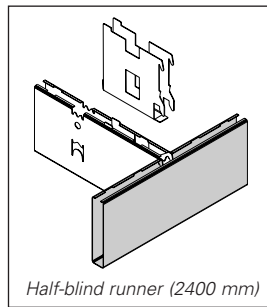
Edge profile type and quantity is subject to individual project requirements.

	Unit	Cell 50E Tile 1200 x 600	Cell 50E Tile 600 x 600
Cell 50E tiles	pcs	1.39	2.78
Main Runners 2400	lm	0.83	1.67
Cross Runners 1200	lm	1.67	
Cross Runners 600	lm		1.67
Sliding Clips	pcs	5.56	11.12
Splices	pcs	0.35	0.70
Cell Hangers	pcs	0.69	1.39

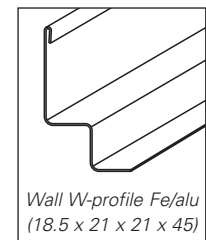
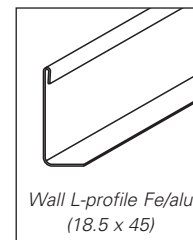
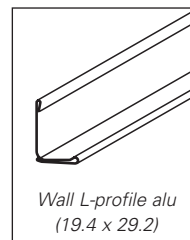
Perimeter

STANDARD PERIMETER OPTIONS

Cell 50E



EDGE PROFILES



CELL DIMENSIONS

Standard dimensions are 600 x 600 mm and 600 x 1200 mm. Other sizes on request.

Material

SPECIFICATIONS

- Base Material

Cell Ceiling systems are manufactured from aluminium alloy HD5050 or equal (according to EN 1396, and EN 13523 Series).

- Coating

The tough and durable 2-layer polyester finish in a nominal thickness of 20 microns is stove enameled in a continuous coil-coating process to ensure uniform coating thickness and absolute adhesion.

- Colour range

The standard Hunter Douglas interior colour range for Cell Ceiling systems includes a wide variety of colours and finishes. For more information, see our colour chart. Any other (RAL or NCS) colour is available upon request.

- Tolerances

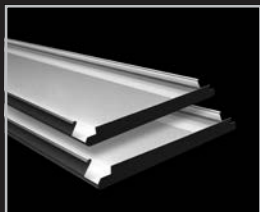
As a member of the Technical Association of Industrial Metal Ceiling Manufacturers (TAIM), Hunter Douglas complies with tolerance criteria as specified in the TAIM Quality standards for metal ceilings.

- Fire Behaviour

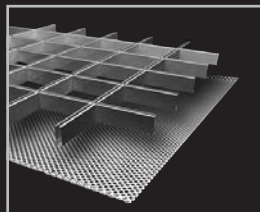
Hunter Douglas metal suspended ceilings are classified A2,s1,d0 according to EN 13501-1, and therefore will not contribute to fires. Hunter Douglas Open Cell creates a ceiling through which large amounts of air and or smoke can be extracted, a distinct advantage in escape routes where the clearest visibility is required.

- Plenum Accessibility

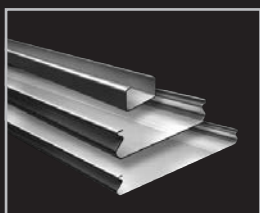
Hunter Douglas Cell Ceiling systems allow for easy (de)mounting of the panels. The standard panels are easily lifted upwards and removed, allowing full access to systems and installations in the plenum. The minimum free space for comfortable (de)mounting is 130 mm. The swing-down systems allow for (de)mounting the panels downward, with the panels swinging and remaining suspended to allow for easy interaction with the plenum. The sliding clips allow for (de)mounting of the panels from below for cases where there is no handling space in the plenum.



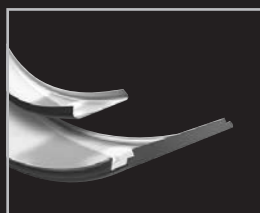
Wide Panel



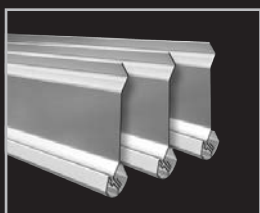
Cell | Stretch metal



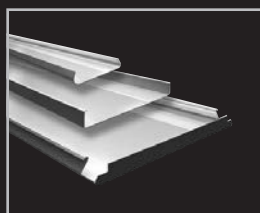
Linear



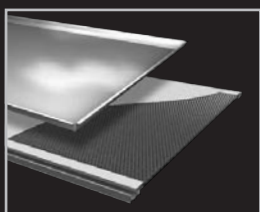
Curved



Screen



Exterior



Tiles | XLnt panel

- Belgium
- Bulgaria
- Croatia / Slovenia
- Czech Republic
- Denmark
- France
- Germany
- Greece
- Hungary
- Italy
- The Netherlands
- Norway
- Poland
- Portugal
- Romania
- Russia
- Serbia
- Slovakia
- Spain
- Sweden
- Switzerland
- Turkey
- United Kingdom
- Africa
- Middle East

- Asia
- Australia
- Latin America
- North America



Produced by
Hunter Douglas
Ceiling Center



Hunter Douglas Architectural

Piekstraat 2
P.O. Box 5072 - 3008 AB Rotterdam
The Netherlands
Tel. +31 (0)10 - 486 99 11
Fax +31 (0)10 - 484 79 10
www.hunterdouglasarchitectural.eu

© Registered trademark - a HunterDouglas® product Pats. & Pats. Pend. - Technical data subject to change without notice. © Copyright Hunter Douglas 2018. No rights can be derived from copy, text pertaining to illustrations or samples. Subject to changes in materials, parts, compositions, designs, versions, colours etc., even without notice. MX074C00