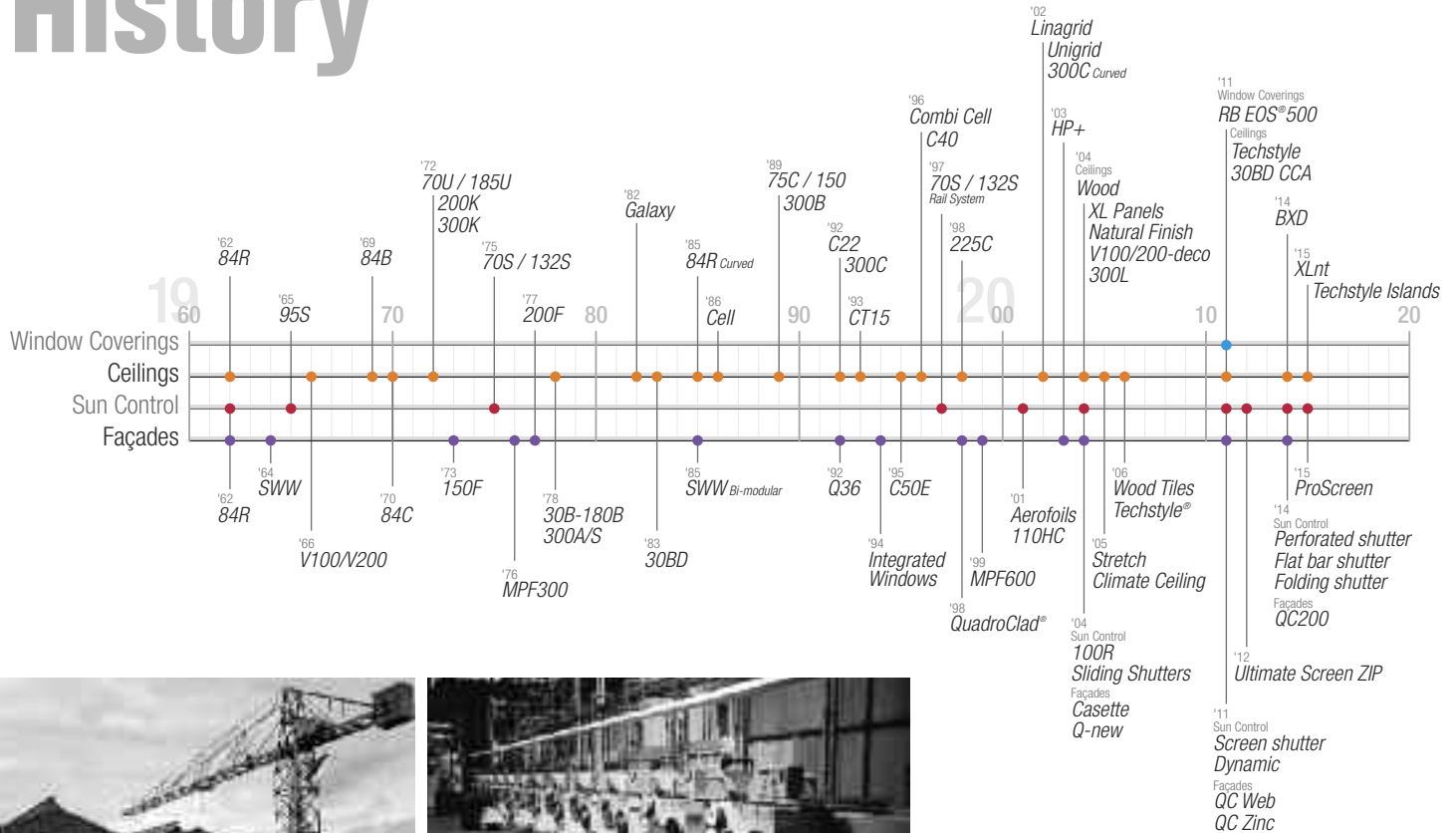


# Folding Shutters Impressions

HunterDouglas WorldWide

**HunterDouglas**

# History



Innovation lies at the heart of the Hunter Douglas culture through research, as well as actively encouraging new talent.

From our founding in 1919, Hunter Douglas has been a home for innovators. Established by entrepreneurs, our culture has been one of innovation and advancement that attracts the best and the brightest. With global manufacturing and distribution capabilities, our international presence is uniquely multi-cultural, yet distinctly dedicated to a shared vision to meet the ever-changing needs of our customers.

We never stop innovating at Hunter Douglas. Innovation is at the very core of our business. Our decentralized structure actively stimulates innovation throughout the company where we encourage constant experimentation with our products. Many of our most exciting developments are born from the front line of the organization. At our specialized R&D centers in the United States, The Netherlands, Germany and Asia our engineers and designers are working together developing new products. It's fun and exciting to develop and refine products that enhance and manage light but also satisfy design conscious consumers and architects. Even the smallest refinement in a product can bring around big benefits in energy savings and light management for homes and offices.

Architects are our inspiration. At Hunter Douglas we actively collaborate with customers to develop new product concepts and sustainable solutions for window coverings and architectural products. We are continually seeking, testing and developing new concepts and products that will enable us to meet ever-more-demanding standards of performance. Our growing range of sun control solutions, ceilings, façades, motorized products and building management systems help today's architects move their projects to the forefront of sustainable building.

**It's an exciting time to be an architect. New methods, new materials, and new designs that were not feasible as little as two decades ago.**

**Throughout the world, Hunter Douglas is helping bring original ideas off the drawing board and into reality. We're working alongside the architecture and design community, creating some of the world's most recognizable buildings.**

**We know how much work goes into each project. That's why we've dedicated ourselves to the idea that for architects and designers to create innovative projects, they need innovative, customizable products.**



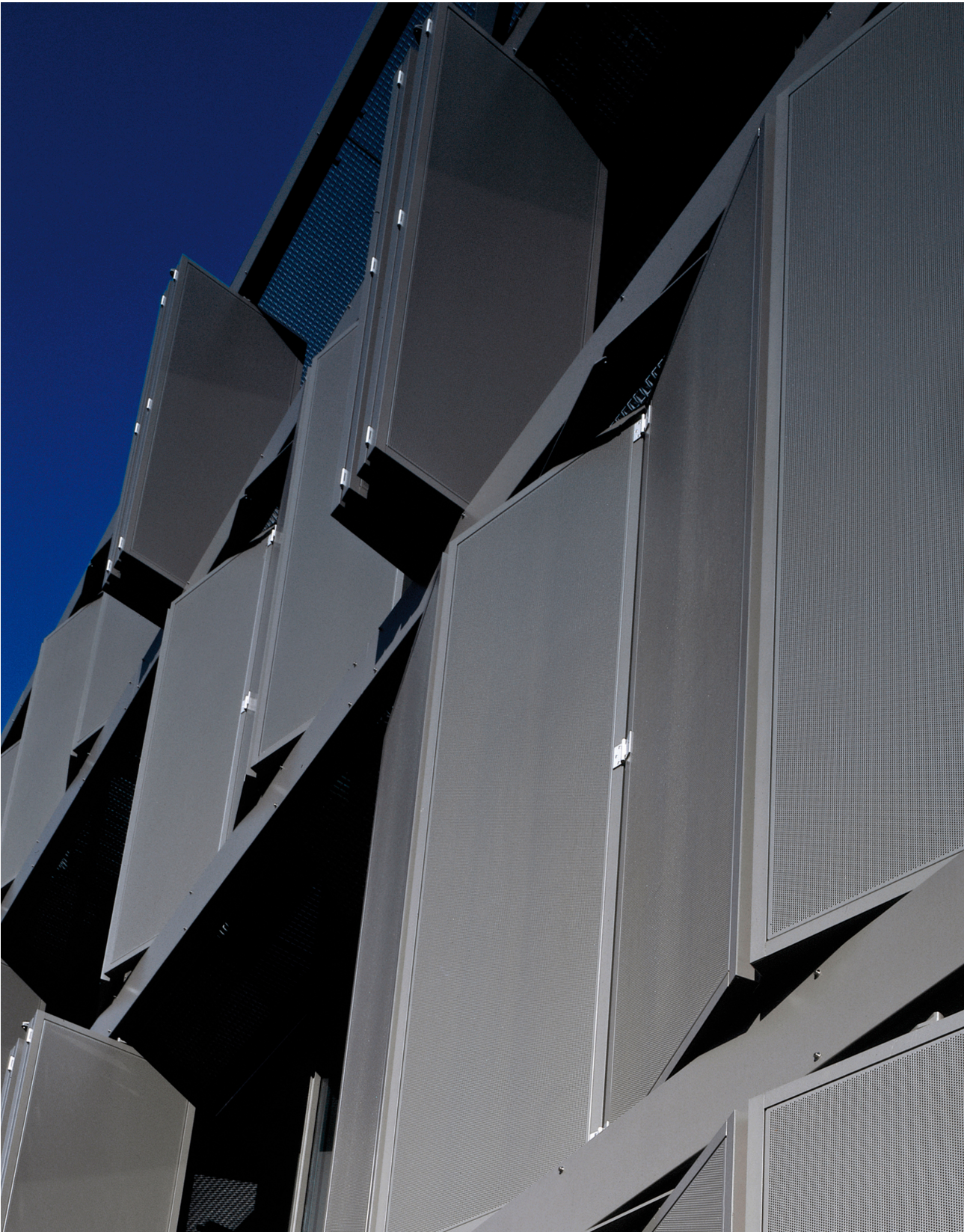


Project : Administratief Centrum De Vuurmolen  
 Location : Overijse, Belgium  
 Product : Screens, Omega Sun Control, Folding Shutters and Wooden Ceilings  
 Architect : A2D Architects



*Overijse, Belgium*  
*Administratief Centrum*  
*De Vuurmolen*









# *Altis Belém Hotel*

*Lisbon, Portugal Doca do Bom Sucesso*



Portuguese architects Risco have completed a hotel alongside the docks in Belém, Lisbon, with concertina shutters that fold back to reveal deep balconies. Called Altis Belém Hotel, the long three-storey building is situated on the waterfront of the Bom Sucesso Dock and overlooks the Belém Cultural Centre. It is a 5-star hotel with 50 rooms and a number of facilities intended to support water sports.

The main structure, which has two floors, lies perpendicular to the Tagus in such a way as to make best use of the views across the city and the estuary. It is also designed not to constitute a visual obstacle along the axis between the Belém Tower and the Monument to the Discoveries. In Altis Belém Hotel & Spa, Hunter Douglas applied motor driven folding shutters.

The challenge was the pattern that was chosen by the architect for the glass façade to continue it in the folding shutters. Hunter Douglas realized this by cutting out the pattern from aluminium plates. The aluminium plates are mounted on a frame. To get the shutters completely closed in the façade, each section starts with a shutter of a half width. All panels are driven individually for an uncomplicated functioning.









Project : Altis Belém Hotel  
Location : Lisbon, Portugal  
Product : Custom Design Folding Shutters  
Architect : Risco Architects





Project : Batenburg  
Location : Tilburg, the Netherlands  
Product : Electrical Folding Shutters  
Architect : Archebouw

# *Batenburg*

*Tilburg, the Netherlands*







# *Palazzo Dorottya*

*Budapest, Hungary*



Project : Palazzo Dorottya  
 Location : Budapest, Hungary  
 Product : Folding Shutters  
 Architect : Közti, Peter Pottyondy





# *Stadsgehoorzaal*

*Leiden, the Netherlands*





In the old city of Leiden, the extension and renovation of the City Auditorium, designed by Van Mourik Architects, is completed. The historic façade at the Aalmarkt was completely reconstructed. Behind that an entirely new building is located containing a small theatre hall, lobbies and offices.

Hunter Douglas provided large folding shutters clad with louver fins in Siberian larch, covering the entire glass façade adjacent to the garden. The folding shutters protect the spaces inside the new building from overheating by solar radiation and provide a comfortable daylight level. By folding the shutters the façade opens itself and transforms from a massive looking volume to a completely transparent envelope.

The result is an impressive yet warm façade with a dynamic appearance. The shutters are controlled by a weather station combined with individual controls per room.











Project : Stadsgehoorzaal  
Location : Leiden, the Netherlands  
Product : Electrical Folding Shutters  
Architect : Architecten Van Mourik





Project : D'Haenens Apartments  
 Location : Gent, Belgium  
 Product : Custom Folding Shutters  
 Architect : Bontinck® Architecture & Engineering

# *D'Haenens* Gent, Belgium *Apartments*









*Residential* the Netherlands  
*Garden Pavilion*





In this residential project in the Netherlands the shutter design was combined with a cladding in CorTen steel, integrating the shutters into the façade completely. The result is a stunning little piece of architecture that completely meets with the architect's original ideas and expectations. The shutters work as sun control but also close off windows and doors in an elegant way. This smart new design solves the problem of making an electrical folding shutter close completely to a flat surface.

The combination of the unique and elegant folding principle with complete freedom of design makes the HunterDouglas® flat folding shutter solves a beautiful challenge for architects looking for a dynamic and functional facade. The garden pavilion presents itself modest, but appearances are deceiving. The maximum permitted height of three meters says nothing about the overall dimensions of the recessed building: under the ground is a luxurious, multifunction gym hiding, the size of a squash court.



Project : Garden Pavilion  
 Location : the Netherlands  
 Product : Eccentrically moving Flat Folding Shutter  
 Architect : Ivo de Bruin (Studio Puur NL)



Folding shutters on the façade this building creates an unusual dynamic. Designing the transparent parts of the building envelope with closed or open folding shutters, in combination with colour creates a completely new look. Hunter Douglas folding shutters create a monolithic appearance when they are closed forming flat closing sun screen system. The shutters on the rounded part of the building are fitted with the same hinge construction as the harmonica shutters on the straight facades, but powered by a spindle motor attached to the shutters themselves, so that they can be opened and shut electrically. Hunter Douglas has taken this newly developed technique from flat folding shutters in order to be able to operate shutters on the curve.





Project : Fioretti college  
Location : Lisse, the Netherlands  
Product : Folding Shutters  
Architect : ir. Aldo Vos, Broekbakema



# *Fioretti* *Lisse, the Netherlands* *college*





*Residential*  
*Gloucester, United Kingdom*  
*Merchant Quay*

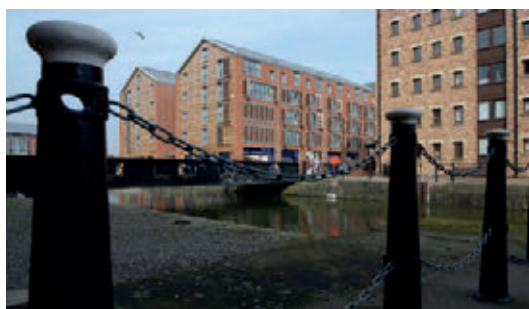




**The historic waterfront at Gloucester has undergone a multi-million regeneration and at the heart of the scheme is the rejuvenated Merchants Quay development.**

Hunter Douglas has created an innovative shutter system for the new landmark dockside building, which sits in the heart of a Grade II listed environment and has to meet strict planning requirements. The high-profile waterfront scheme allowed Hunter Douglas to highlight the complete shutter system solution it is able to offer. The Hunter Douglas shutters blend style and functionality - inside and out. By providing building exteriors with a distinctive and stylish look as well as offering optimal solar effectiveness for maximum internal comfort.

Using the right system can greatly influence the thermal and visual indoor climate and the Hunter Douglas team worked closely with architects Stride Treglown Tektus and contractors Vinci throughout the process, from specification to installation, to ensure the finished solution met all requirements. Providing good thermal and visual comfort at a minimum energy cost calls for a careful matching of façade walls, glazing, sun control, lighting and HVAC equipment. Merchants Quay has become a flagship regeneration project for the city's Docks, traditionally a thriving area of Gloucester and now enjoying a new lease of life thanks to such impressive developments.











Project : Residential Merchant Quay  
Location : Gloucester, United Kingdom  
Product : Sliding and Folding Shutters  
Architect : Stride Treglown Tektus











Project : Care Center 'De Nieuwe Heikant'  
Location : Tilburg, the Netherlands  
Product : Folding Shutters  
Architect : Oomen Architecten



# *Care Center*

*Tilburg, the Netherlands*

# *De Nieuwe Heikant*



# *Harsuf*

*Gaash, Israël*





### **A stylish, dynamic look**

On a cliff overlooking the Mediterranean beach, 100 meters from the shoreline, a new neighborhood has been built, planned by Pivko Architects Office. The challenge in this project was to create a rounded façade of motorized folding shutters, closing at 180 degrees while concealing the runners; thus, the appearance of a clean, uniform façade is created. The shutters covering the east southeastern façade; shade the apartments' interior and give a stylish, dynamic look to the building's exterior.

The shutters are built from aluminum frames covered with aluminum sheets, painted white. 12 different perforation patterns were designed by the architect to create non-uniformity among the panels. The shutters are motorized, operated by a central control system that also enables operation of each window separately. In the center of the project stands the lobby building, surrounded by decorative pools, covered on the entire height of the building, with a finish identical to that of the façade shutters.

The result is a breathtaking, dynamic white façade, blending in with the decorative pools on the one side, and the Mediterranean Sea on the other side.

Project : Harsuf  
 Location : Gaash, Israël  
 Product : Motorized Folding Shutters  
 Architect : Ilan Pivko Architects  
 Amit Mass (Associate architect)  
 Dror Brill (Architect project manager)





# *Villa Materada*

*Istria, Croatia*



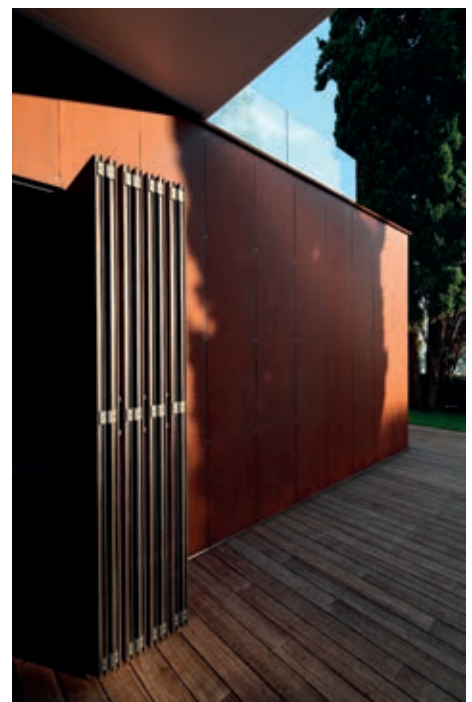


## Functional and aesthetic

A single family holiday house. The wish was a recognizable, residential house that satisfies functional and aesthetic demands, a visual imperative of luxury and comfort. Basic used materials are corten, aluminium, wood and glass.

The aluminum façade on the first floor, roof and exterior ceilings are lined with HunterDouglas® MPF Panels in white. Ground floor façade is covered with ventilated Corten panels including the Folding Shutters with Corten infill, also provided by Hunter Douglas.

Project : Villa Materada  
 Location : Istria, Croatia  
 Product : Multi Panel Façade and Folding Shutters  
 Architect : Mr. Davor Matekovic

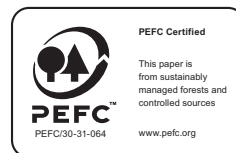


Product	Project	Country	Section	Page
Folding Shutters				
Screens, Omega Sun Control, Folding Shutters and Wooden Ceilings	Administratief Centrum De Vuurmolen	Belgium	Offices	3-4
Custom Design Folding Shutters	Altis Belém Hotel	Portugal	Hotels	5-8
Electrical Folding Shutters	Batenburg	the Netherlands	Offices	9-10
Folding Shutters	Palazzo Dorottya	Hungary	Residential Buildings	11-12
Electrical Folding Shutters	Stadsgehoorzaal	the Netherlands	Public Places	13-16
Custom Folding Shutters	D'Haenens Apartments	Belgium	Residential Buildings	17-18
Eccentrically moving Flat Folding Shutter	Garden Pavilion	The Netherlands	Residential	19-20
Folding Shutters	Fioretti college	The Netherlands	Education	21-22
Sliding and Folding Shutters	Residential Merchant Quay	United Kingdom	Residential	23-26
Folding Shutters	Care Center 'De Nieuwe Heikant'	The Netherlands	Residential / Health	27-28
Motorized Folding Shutters	Harsuf	Israël	Residential	29-30
Multi Panel Façade and Folding Shutters	Villa Materada	Croatia	Residential	31-32





Hunter Douglas products and solutions are designed to improve indoor environmental quality and conserve energy, supporting built environments that are comfortable, healthy, productive, and sustainable.





[www.hunterdouglascontract.com](http://www.hunterdouglascontract.com)

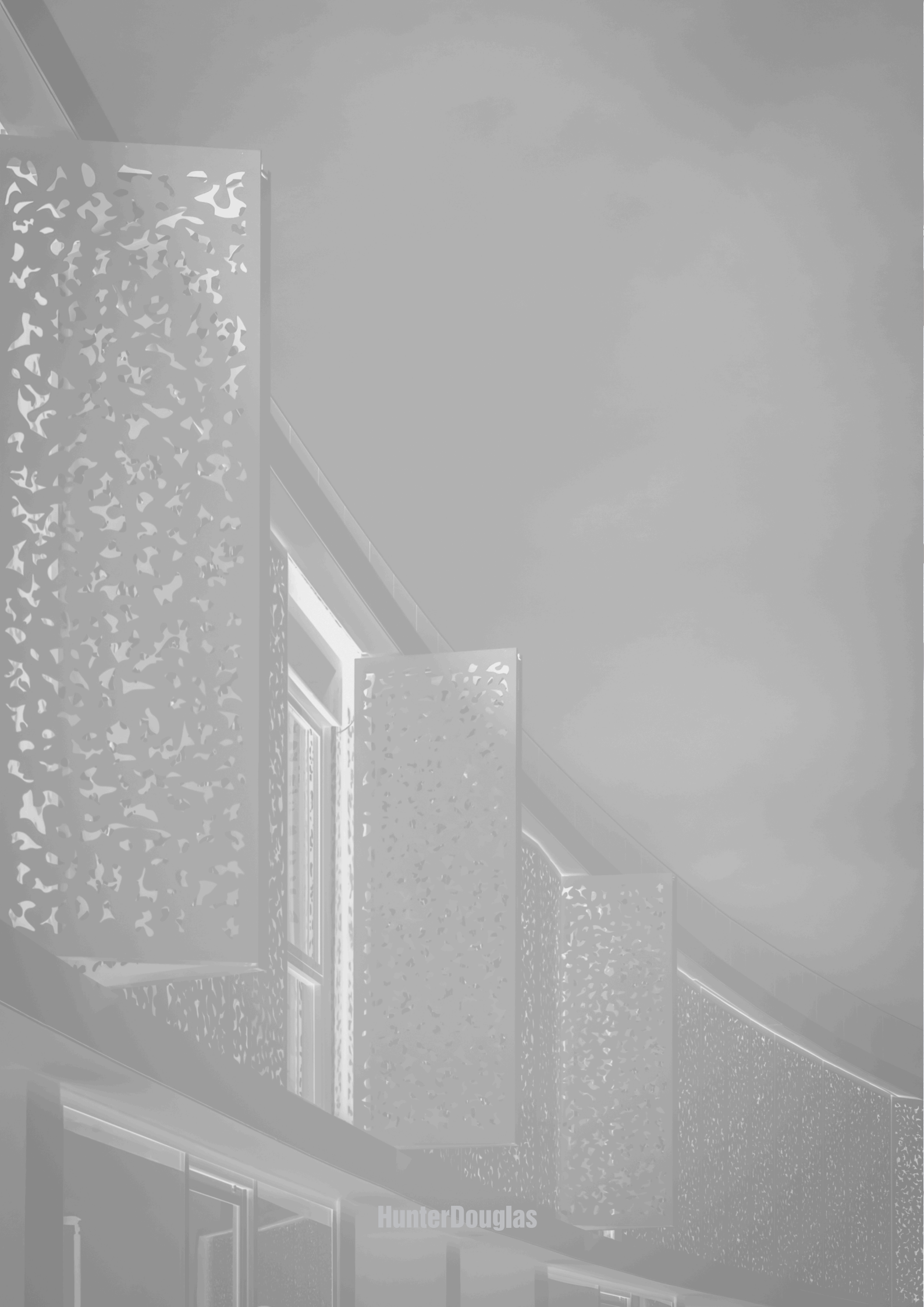
---

® Registered trademark - a HunterDouglas® product Pats. & Pats. Pend. - Technical data subject to change without notice. © Copyright Hunter Douglas 2016. No rights can be derived from copy, text pertaining to illustrations or samples. Subject to changes in materials, parts, compositions, designs, versions, colours etc., even without notice.

---

A publication of Hunter Douglas





HunterDouglas