

# QuadroClad® Façades

HunterDouglas® QuadroClad® Façade System is a unique, open-jointed cladding system based on the principles of rainscreen façade technology.



Technical brochure

**HunterDouglas**   
Architectural

# QuadroClad® Façades

Outstanding looks, excellent functionality



Project : Jaguar / Landrover, Lille, France  
Product : QuadroClad® QC300  
Architect: SRA Architects



QC50

Two folded aluminium layers with honeycomb core inside



QC100

Roll formed edges for easy installation



QC200

Fully engineered extruded top profile



QC300

Specially designed aluminium extruded profile

## THE PERFECT COMBINATION

HunterDouglas® Façade Systems have been specifically engineered to meet almost any design criteria. The system combines a unique design with a durable and robust structure that can withstand even the severest of environments. Achieved by using technology originally developed for the aircraft industry, our façade systems combine a smooth, flat and stylish appearance with superior performance.

## FORM AND FUNCTION

Choosing the right façade system can be challenging. When you specify the HunterDouglas® QuadroClad® Façade System you will find a product range that effortlessly blends form and function, whilst enhancing both the building's comfort and performance levels. The QuadroClad® Façade System can be applied to almost any new or existing substructure.



# QuadroClad® technical features

- Large façade panels (1500 x 6000 mm as standard)
- Extreme panel flatness combined with sharp and clean edges
- Excellent wind-load performance
- No thermal-bow in panels due to aluminium honeycomb construction, which ensures extreme flat panels
- Low weight per m<sup>2</sup> (approximately 6.5 kg/m<sup>2</sup>)
- Quick installation methods with minimum fixings to substructure
- Suitable for any building size
- Endless possibilities for combining materials, colours and finishes
- Made to measure product
- Superior quality and durability
- Almost any panel shape possible: trapezoidal, curved, cranked etc.

## CREATIVE FREEDOM

HunterDouglas® Quadroclad® Façade System includes a wide range of panel shapes and sizes. These can be curved or cranked using our standard joint and carrier system. An unlimited range of colours, materials and surfaces provide the design team with unparalleled creative freedom.

## COMMITTED TO QUALITY

A relentless commitment to quality, as well as more than 50 years of worldwide experience in the development and manufacturing of aluminium façades, has created a high level of quality that characterises all HunterDouglas® architectural products.

## INTERIOR

QuadroClad® panels allow the architect and designer to seamlessly continue the exterior façade into the interior design. This unique feature gives the perception of a spatial effect. Please refer to page 12 for our QuadroClad® interior system.

## CONTENT

	Page
Honeycomb composite technology	2
Product information and specification	4
QuadroClad® QC50 Exterior	6
QuadroClad® QC50 Interior	12
QuadroClad® QC100 Vertical	18
QuadroClad® QC200 Horizontal	24
QuadroClad® QC200 Vertical	30
QuadroClad® QC300 Horizontal	36
QuadroClad® QC300 Vertical	42
Architectural service	48

**HunterDouglas**   
Architectural

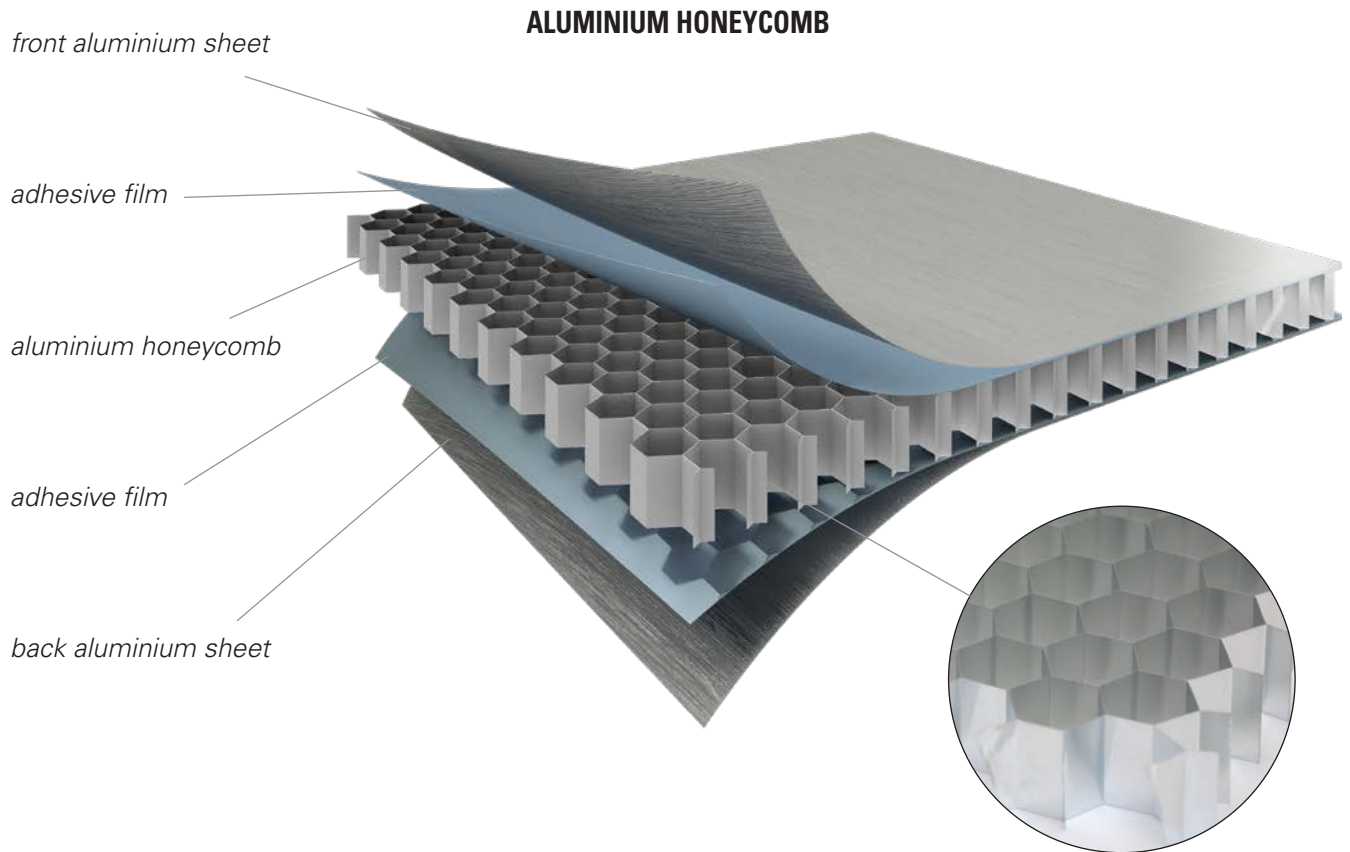


Designed to work for you



# Honeycomb composite technology

Incorporated within our honeycomb composite technology are two metal skins that sandwich a unique aluminium honeycomb structure, specifically designed to withstand high pressure and sheer force. The skin and the honeycomb are joined together using high quality adhesives to create an extremely strong and solid mechanical construction.



*Below* : Fire Department, Bornem, Belgium  
Architect: Studio Klein Brabant  
Product : QuadroClad® QC200





### COIL-COAT TECHNOLOGY

Hunter Douglas Architectural coil-coats flat metal strips in a continuous process before the metal is given its final shape.

- Coil-coated materials comply with the highest European quality standards (EN 1396)
- Coil-coating takes place under optimum factory-controlled conditions
- High grade pre-treatment (adhesion & protection)
- Optimum control over coating thickness
- High level of colour continuity

### 100% RECYCLABLE

All components of QuadroClad® are made from aluminium.

Aluminium alloy is fully recyclable at the end of the façade lifecycle.



Project : U-Bahnhof Kienberg, Berlin, Germany  
Architect: HEWA Baukonzeptgesellschaft mbH  
Product : QuadroClad® QC300

# Product information and specification

Dimensional specifications	QC50	QC100	QC200	QC300	Unit
Panel thickness	10 - 25	25 - 35	25	25	mm
Panel weight	5.32 <sup>(1)</sup>	5.77 <sup>(1)</sup>	6,7	7,5	kg/m <sup>2</sup>
Joint width	∞	25	10 - 12.5 - 15 mm	10	mm
Maximum length	6000 <sup>(2)</sup>	6000 <sup>(2)</sup>	6000 <sup>(2)</sup>	6000 <sup>(2)</sup>	mm
Maximum width	1550	1550	1550	1550	mm
Thickness - aluminium top sheet	1 <sup>(2)</sup>				mm
Thickness - aluminium back sheet	0.5 <sup>(2)</sup>				mm

<sup>(1)</sup> 25 mm

<sup>(2)</sup> as standard

Finishes and Surfaces		Systems	Max. width	Max. length
Aluminium Colourcoat	Solid Colours	All	1550	6000 <sup>(1)</sup>
	Sparkling Mica	All	1550	6000 <sup>(1)</sup>
	Natural Aluminium	All	1550	6000 <sup>(1)</sup>
	Amazing Metallic	All	1550	6000 <sup>(1)</sup>
	Design and Specials	All	1550	6000 <sup>(1)</sup>

<sup>(1)</sup> Longer panels on request

Materials		Systems	Max. width	Max. length
Zinc	Quartz zinc	All	1200	4000 <sup>(1)</sup>
	Azengar Tache	All	950	4000 <sup>(1)</sup>
	Anthra zinc	All	950	4000 <sup>(1)</sup>
	Pigmento (blue/red/green/brown)	All	1200	4000 <sup>(1)</sup>
	Zinc on demand	All	1200	4000 <sup>(1)</sup>
Copper	Nordic Standard	QC50	1050	4000 <sup>(1)</sup>
	Nordic Brown & Brown Light	QC50	950	4000 <sup>(1)</sup>
	Nordic Green & Blue	QC50	950	4000 <sup>(1)</sup>
	Nordic Royal	QC50	950	4000 <sup>(1)</sup>
Brass	Nordic Brass & Weathered	QC50	950	4000 <sup>(1)</sup>
	Nordic Brass 30	QC50	950	4000 <sup>(1)</sup>
Bronze	Nordic Bronze	QC50	730	4000 <sup>(1)</sup>
Stainless steel	Patterns	QC50	1200	4000 <sup>(1)</sup>
	Granex	QC50	1450	4000 <sup>(1)</sup>
	ColourTex	QC50	1200	4000 <sup>(1)</sup>
	ColourTex (electropolished)	QC50	1200	4000 <sup>(1)</sup>
	OneTex	QC50	1200	4000 <sup>(1)</sup>
	MetalArt	QC50	1200	4000 <sup>(1)</sup>
	Vortex	QC50	1450	4000 <sup>(1)</sup>
	SuperMirror	QC50	1450	4000 <sup>(1)</sup>
Anodised Aluminium	Standard mill finish	All	1500	6000 <sup>(1)</sup>
	Brite	All	1500	6000 <sup>(1)</sup>
	Brushed	All	1500	6000 <sup>(1)</sup>

<sup>(1)</sup> Longer panels on request

Interior only	Systems	Max. width	Max. length
<b>Blackened Steel</b>	QC50	1200	2450
<b>Stainless Steel (T22)</b>	QC50	1450	3950
<b>Ultra matte - high reflective white</b>	All	1550	6000 <sup>(1)</sup>

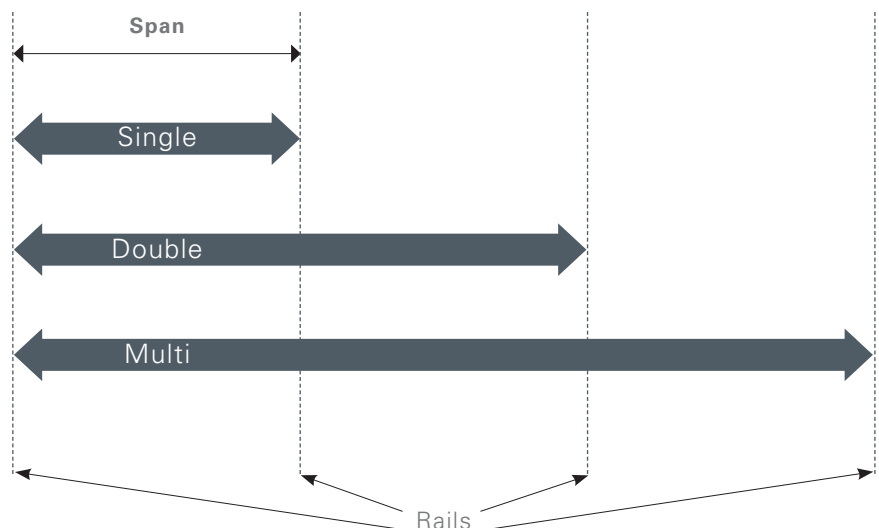
<sup>(1)</sup> Longer panels on request

Colourcoat specifications <i>(Based on aluminium)</i>	Systems	Unit
Coating	PVDF / FEVE / PUR-PA / HDP / PE	
Gloss units	10 - 90 %	
Solid Colours	NCS / RAL / BS / Custom	
Effects	Sparkling Mica / Amazing Metallic / Design and specials / Custom	
Thickness	EN 13523-1, ISO 2360	24-32 micron
Gloss level	EN 13523-2, ISO 2813	28 +/- 3 units
Gloss difference within batch	EN 13523-2, ISO 2813	+/- 3 units
Colour difference from standard	EN 13523-3, ISO 7724, part 3	DE<2 units
Colour difference within batch	EN 13523-3, ISO 7724, part 3	DE<0,7
Flexibility	EN 13523-7, ISO 1519	Depending on alloy/shape
Adhesion	EN 13523-5, ISO 6272	
	EN 13523-7, ISO 1519	For impact/bending over 2T
	ISO 2409	No loss of adhesion
Pencil hardness	EN 13523-4, ASTM D 3363	>= H
Weather fastness	EN 1396, EN 13523-19	Can be used for all categories
Corrosion resistance	EN 1396, EN 13523-19	Highest class
Humidity resistance	EN 13523-9, ISO 6270, ISO 4628/2	Less blister than size 2
Salt/acid corrosion test	EN 13523-9, ISO 4628/2	1,000 hours less than 2 mm creep
Saltspray	ISO 7253	Too mild for aluminium (No result)

Fire Performance <sup>(1)</sup>	Result
EN13501-1	A2 – s1, d0
NFPA 285	Pass
ASTM E84	FSI: 0 / SDI: 0
CAN UL S134	Pass

<sup>(1)</sup> Please contact our Project Support for latest certifications.

Span table for QC300 Horizontal <i>(other systems on request)</i>			
Windload N/m <sup>2</sup> <i>(working load)</i>	Span for module 1500 mm (horizontal distance between the vertical rails)		
	Single (mm)	Double (mm)	Multi (mm)
< 1000	1900	2050	2050
1000 - 1500	1750	1350	1350
1501 - 2000	1650	1000	1000



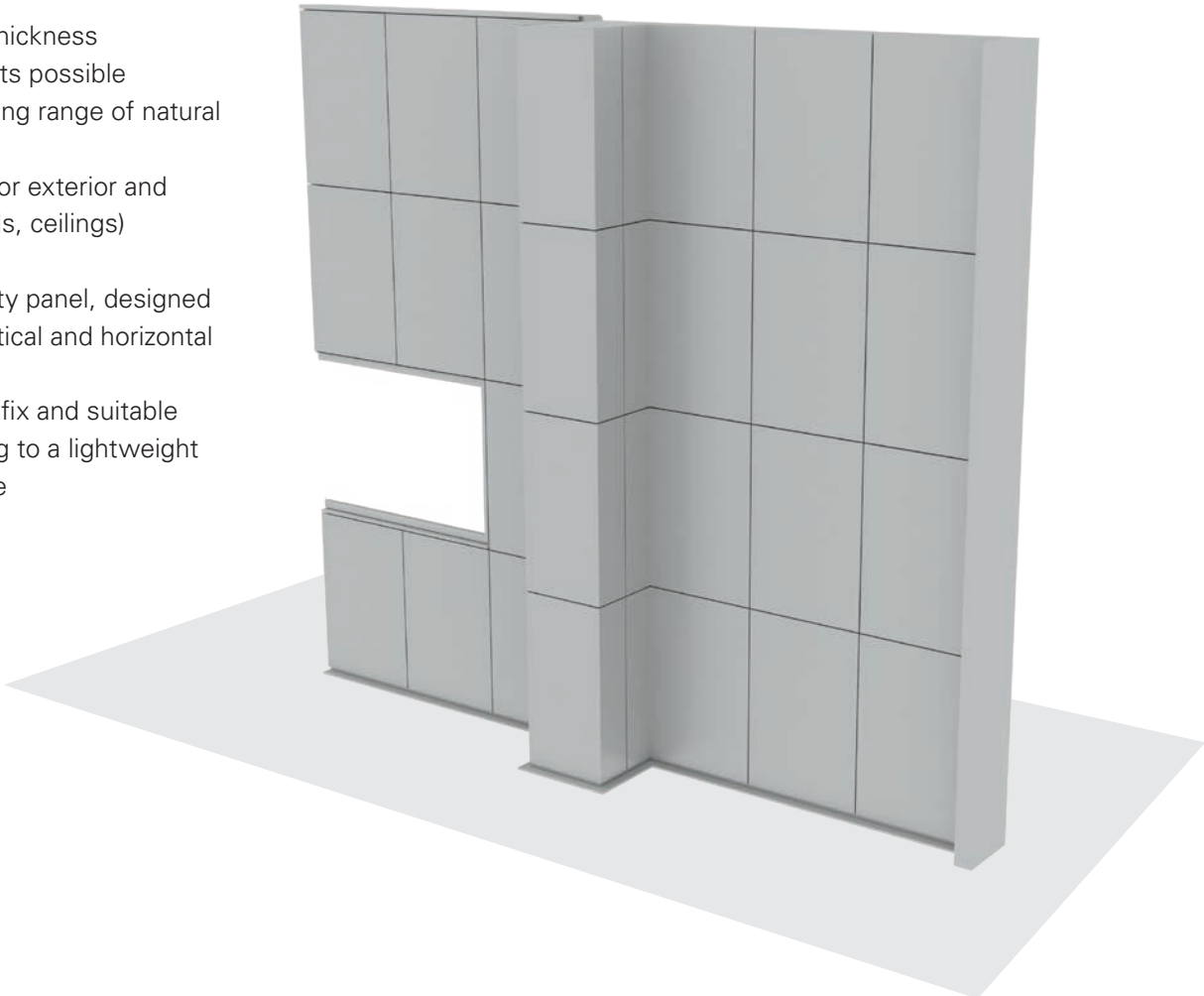


# QuadroClad® QC50 Exterior

**QuadroClad® QC50, our BASIC panel, is a high quality panel that can be fitted to almost any fascia of a building. QC50 is available in a range of natural materials, is lightweight and easy to install.**

### FEATURES

- Variable in thickness
- Variable joints possible
- Fits a stunning range of natural materials
- Applicable for exterior and interior (walls, ceilings) applications
- A high quality panel, designed for both vertical and horizontal application
- It is easy to fix and suitable for mounting to a lightweight substructure



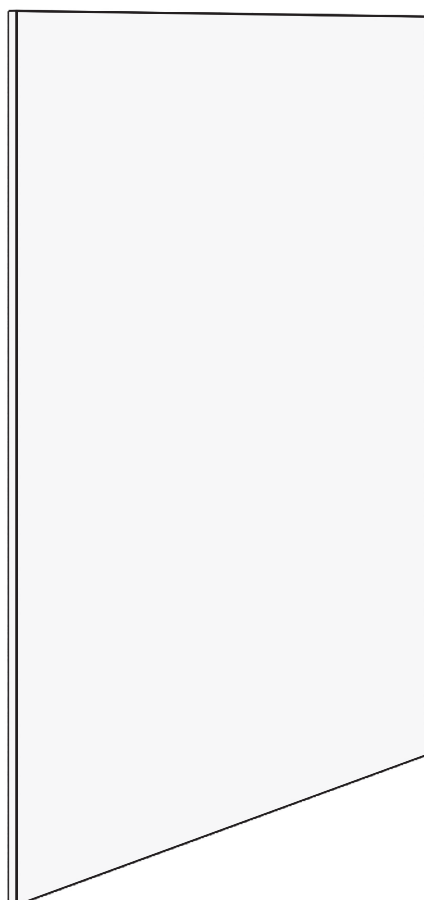
SPECIFICATION	
Maximum panel width	1550 mm
Maximum panel length	6000 mm <sup>(1)</sup>
Panel thickness	15 - 25 - 35 mm
Joint width	∞
Cavity	Min. 10 mm
Available finishes & materials	See page 4

<sup>(1)</sup> Larger panels on request

Project : Crossroad Office Building, San Diego, USA  
Architect : Open Studio Architects  
Product : QuadroClad® QC50



## HUNTERDOUGLAS® QC50 PANEL PARTS



QC50 Panel  
C403000000

## ASSEMBLED ELEMENTS



QC50 Panel

## SUBSTRUCTURE EXAMPLE *(Non-HD)*



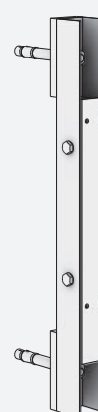
U profile



T profile hooksystem



Vertical limiter

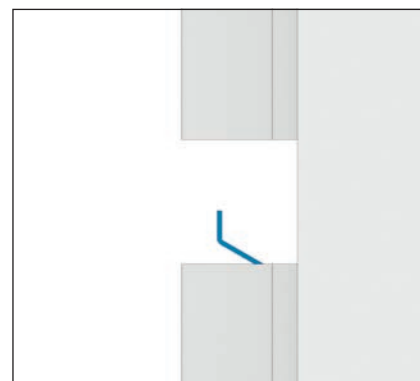
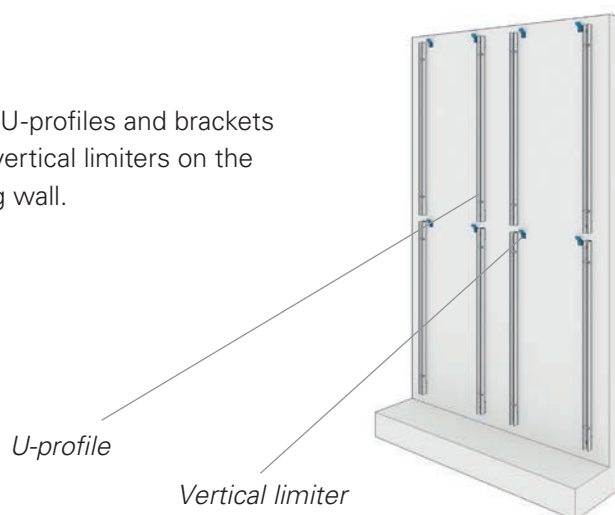


U+T

## INSTALLATION\*

### STEP 1

Mount U-profiles and brackets of the vertical limiters on the existing wall.



Substructure

### STEP 2

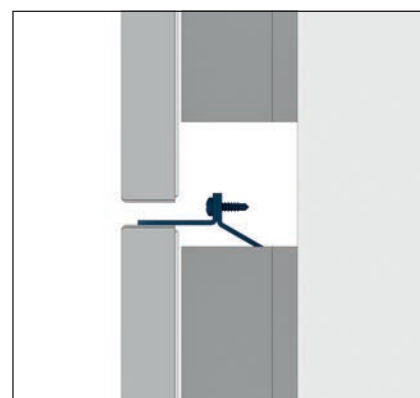
Slide the first panels into position. Screw fix the brackets onto the limiters.



First row panels and vertical limiter

### STEP 3

Repeat the process by sliding the panels into place.

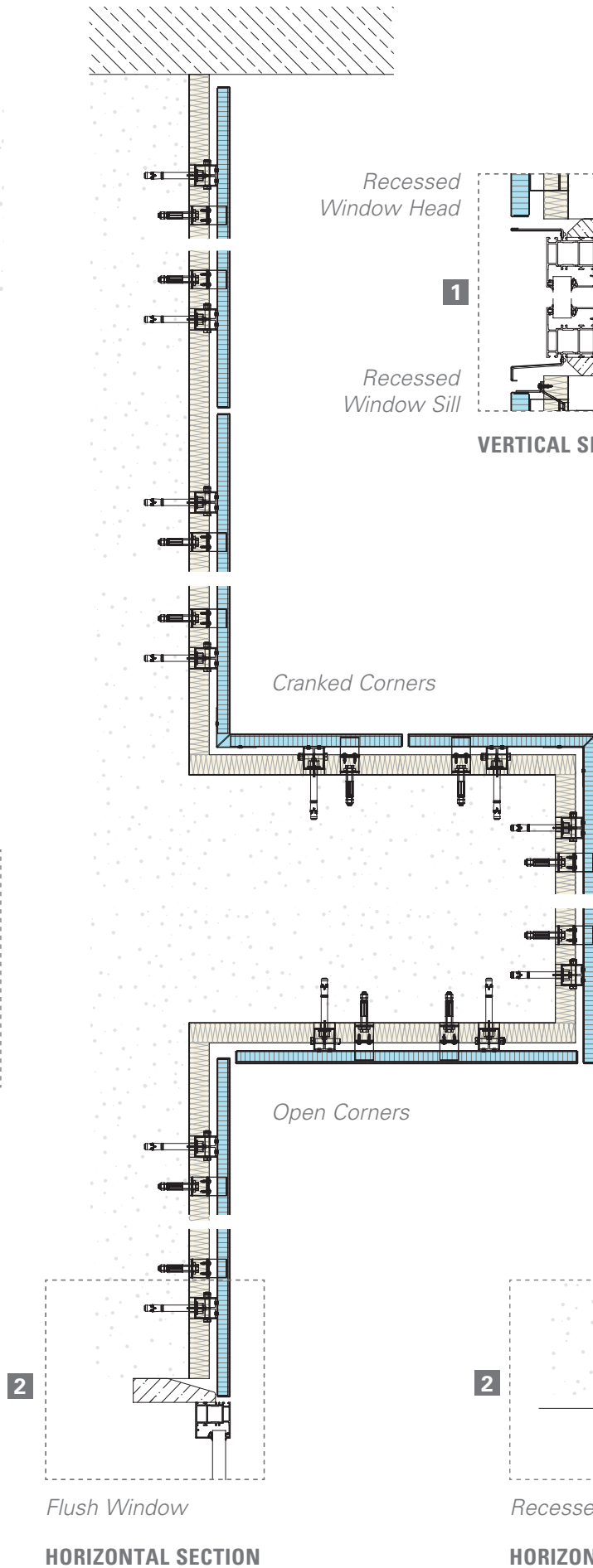
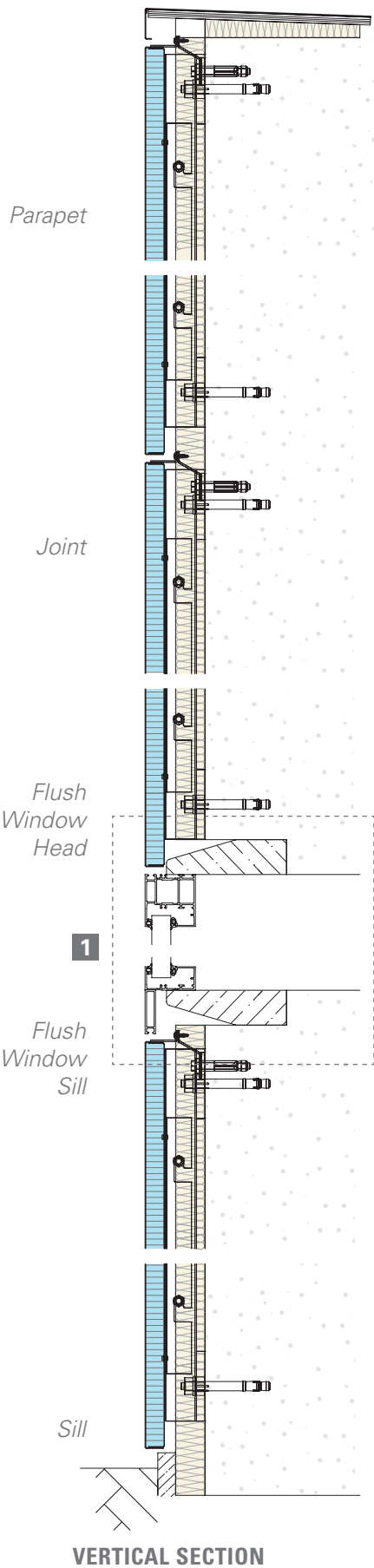


Variable joint between panels

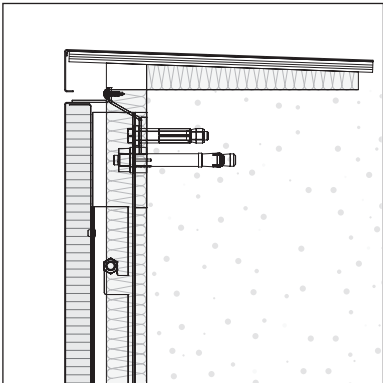
\* For detailed technical information please download our installation manual from the website.



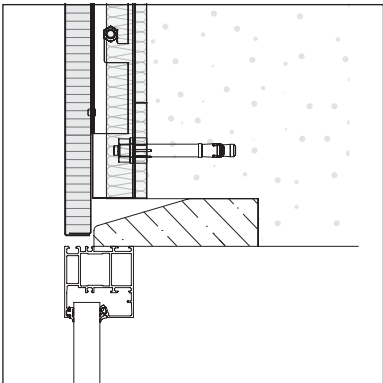
## QC50 SYSTEM DETAILS



DETAILS

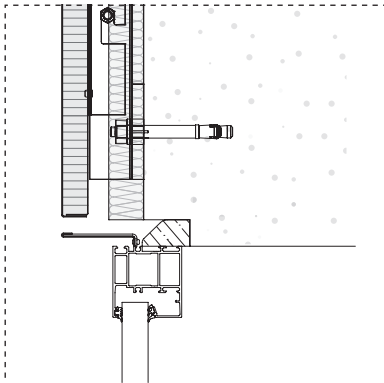


Parapet

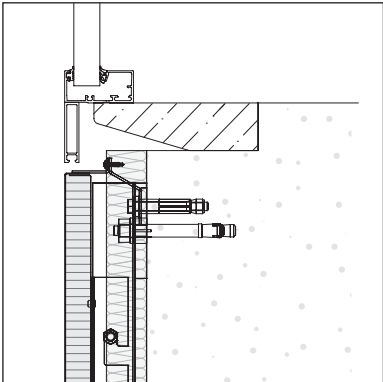


Flush Window Head

Flush or Recessed Window Head

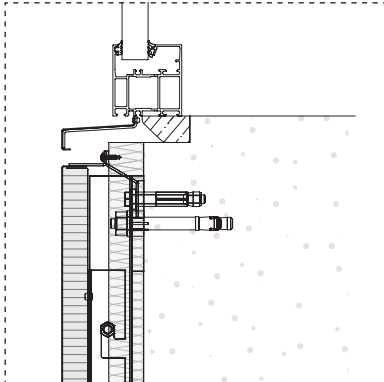


Recessed Window Head

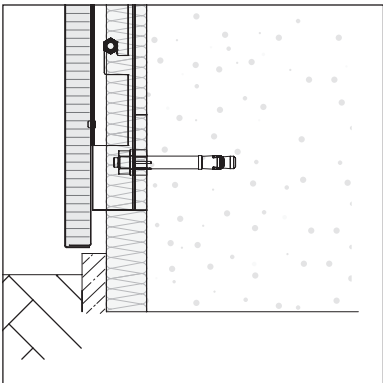


Flush Window Sill

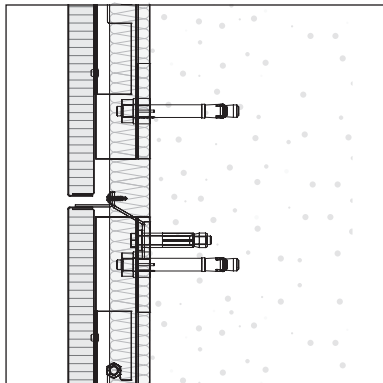
Flush or Recessed Window Sill



Recessed Window Sill

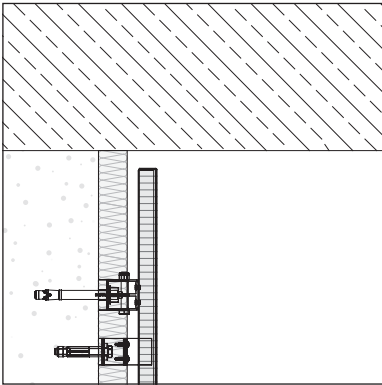


Sill

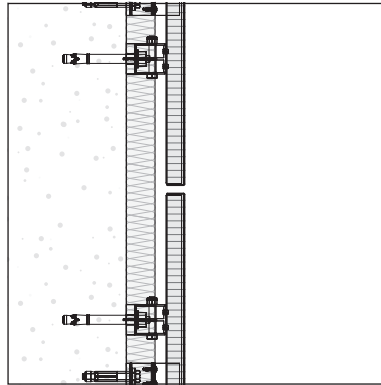


Horizontal Joint

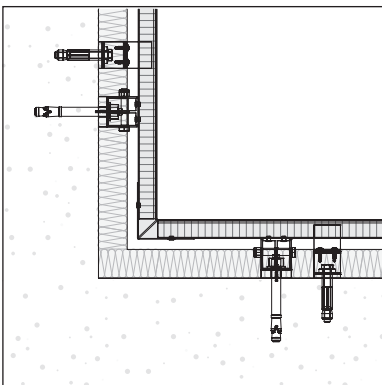
VERTICAL SECTION



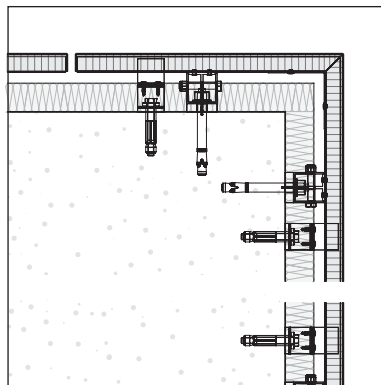
*Wall Jamb*



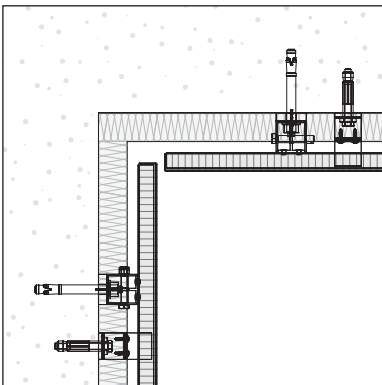
*Vertical Joint*



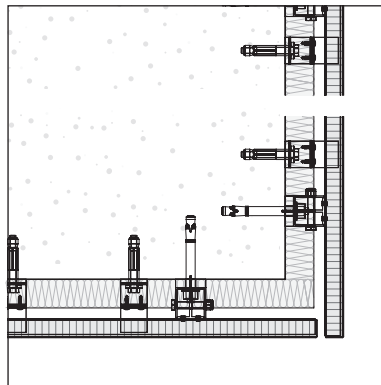
*Cranked Corner Inside*



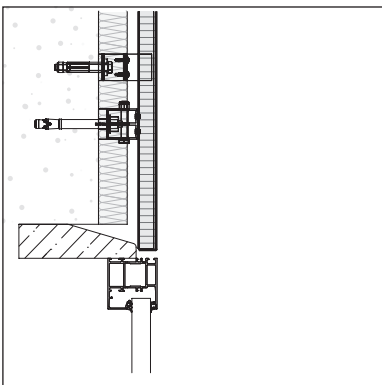
*Cranked Corner Outside*



*Open Corner Inside*

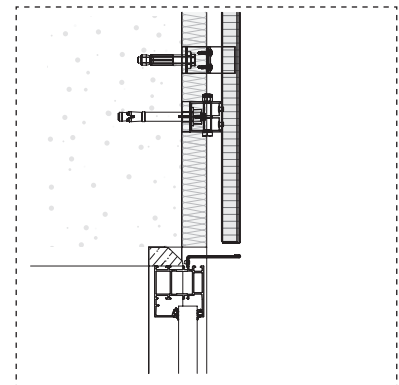


*Open Corner Outside*



*Flush Window*

*Flush or Recessed Window*



*Recessed Window*

## HORIZONTAL SECTION

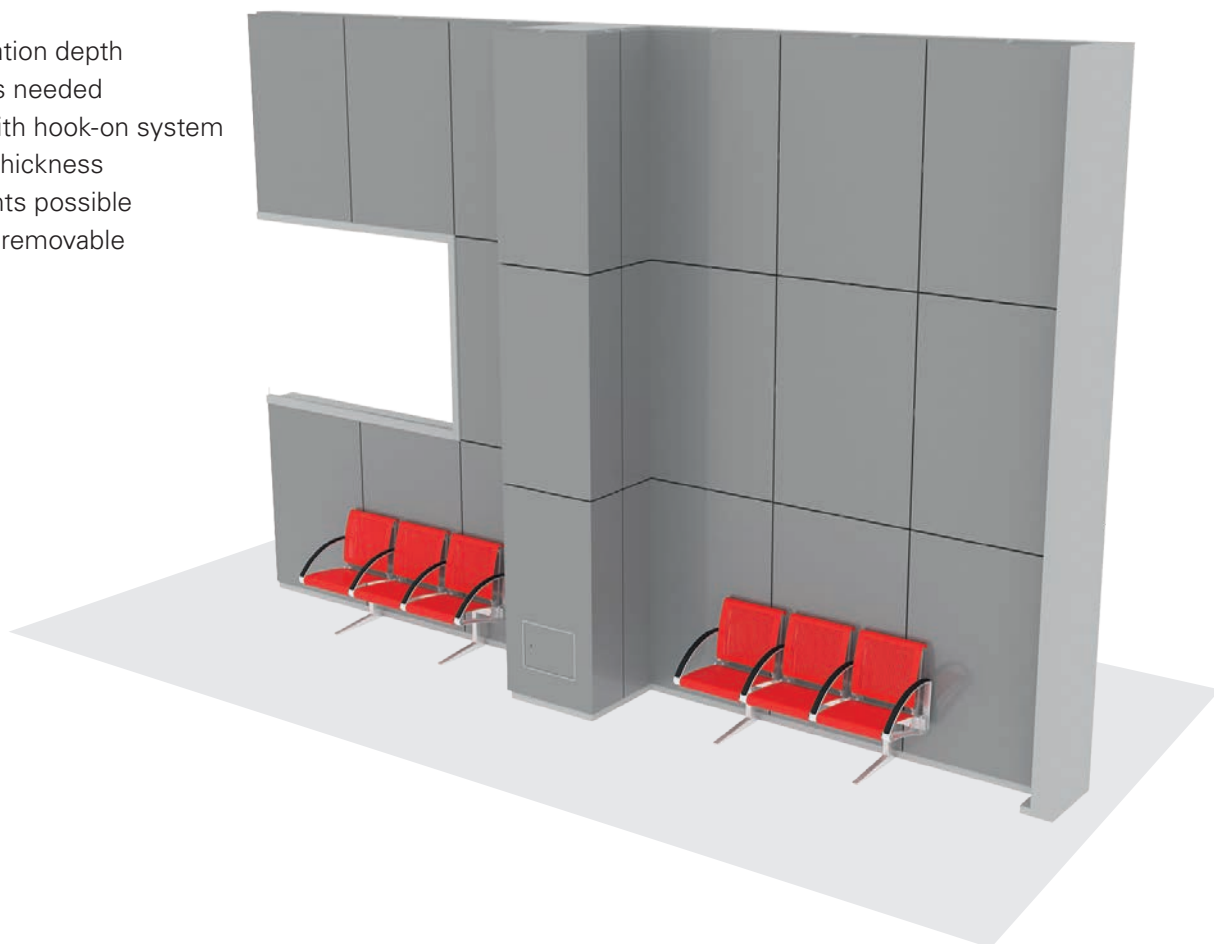


# QuadroClad® QC50 Interior

**Besides exterior cladding, QuadroClad® QC50 is the perfect system for interior solutions. The hook-on profile guarantees easy and quick installation.**

## FEATURES

- Low installation depth
- Fewer parts needed
- Provided with hook-on system
- Variable in thickness
- Variable joints possible
- Individually removable



## SPECIFICATION

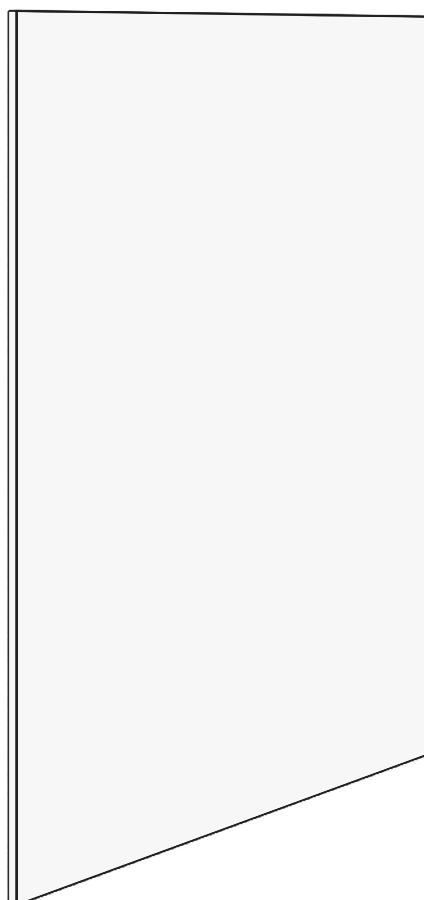
Maximum panel width	1550 mm
Maximum panel length	6000 mm <sup>(1)</sup>
Panel thickness	10 - 25 mm
Joint width	∞
Available finishes & materials	See page 4

<sup>(1)</sup> Larger panels on request

Project : Lario Centre - Bennet, Tavernola, Italy  
 Architect : Progetto CMR  
 Product : QuadroClad® QC50 Interior

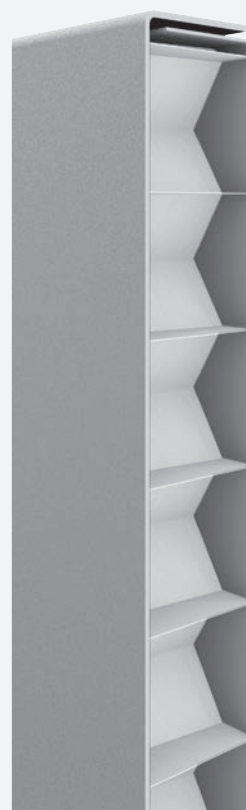


## HUNTERDOUGLAS® QC50 PANEL PARTS



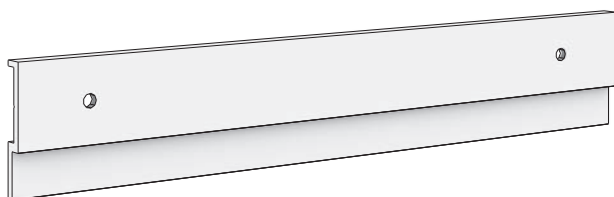
QC50 Panel  
C403000000

## ASSEMBLED ELEMENTS



QC50 Panel

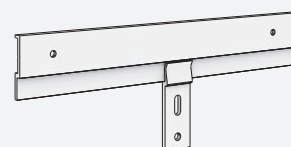
## SUBSTRUCTURE EXAMPLE *(Non-HD)*



Suspension profile



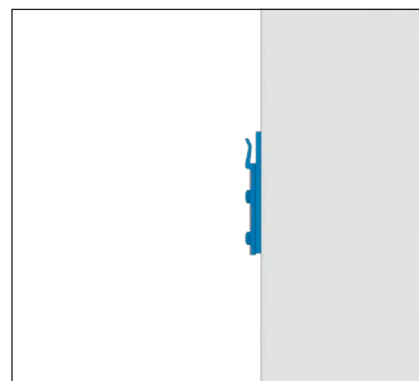
Suspension clip



Substructure

**INSTALLATION\*****STEP 1**

Mount suspension clips onto the existing wall.



*Suspension clip*

**STEP 2**

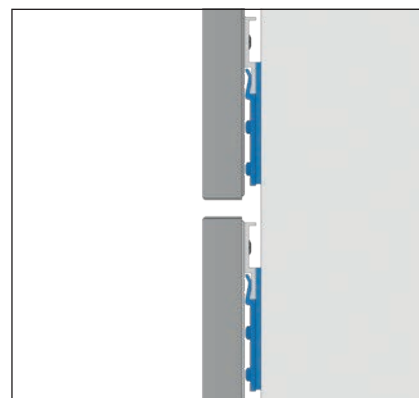
Hook on the first row of panels using the suspension profiles.



*Hooked on panel*

**STEP 3**

Repeat the process by hooking on the next panels.

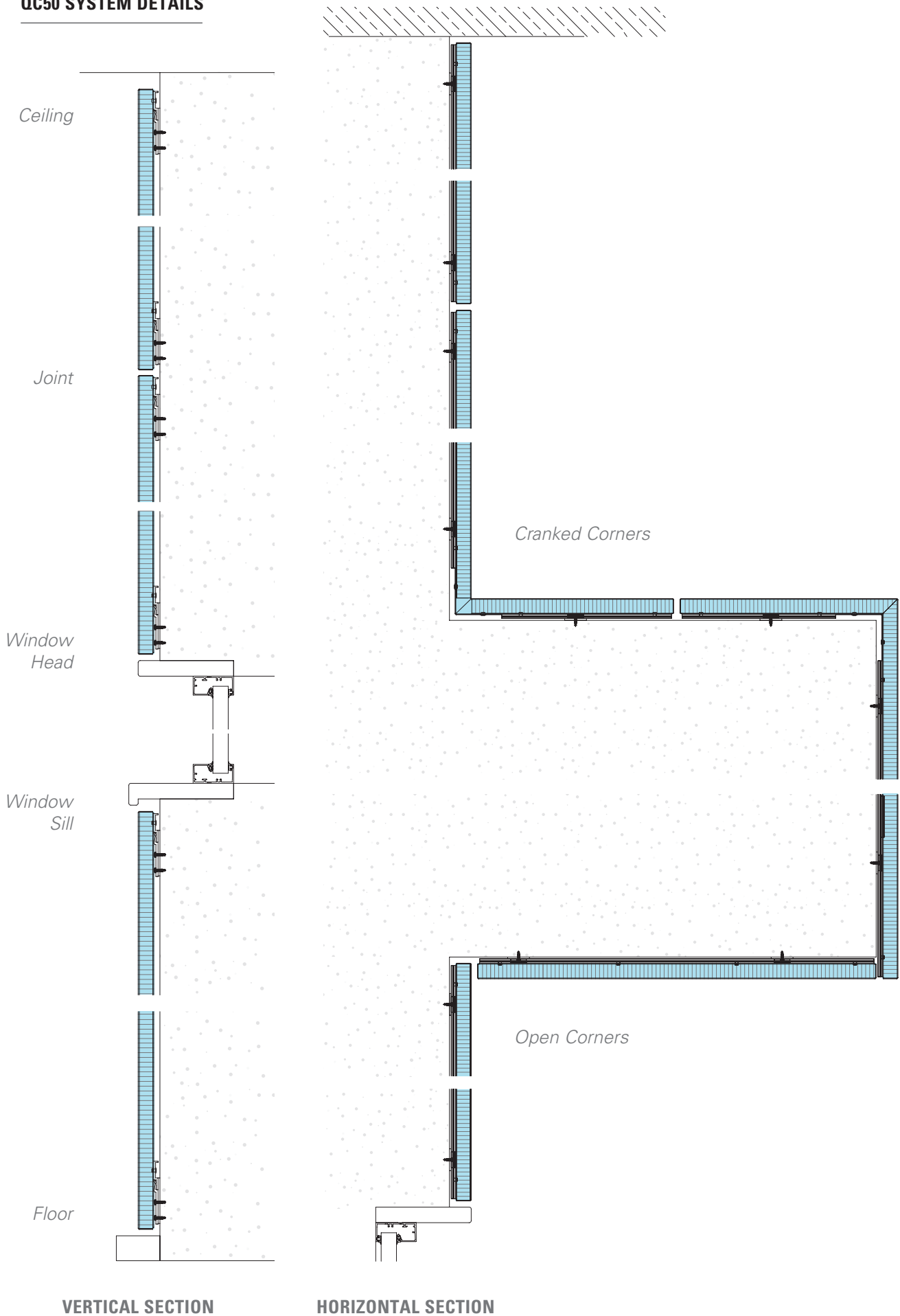


*Open joint*

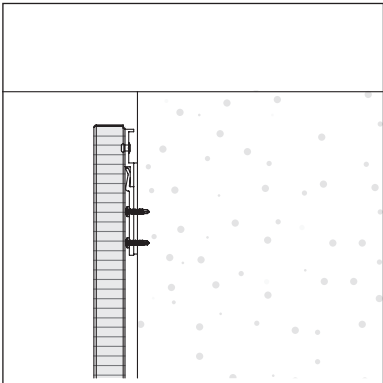
\* For detailed technical information please download our installation manual from the website.



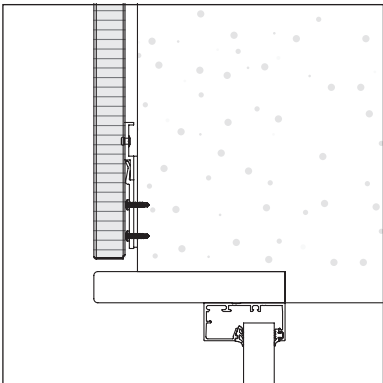
## QC50 SYSTEM DETAILS



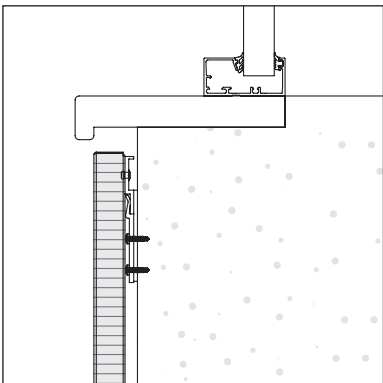
DETAILS



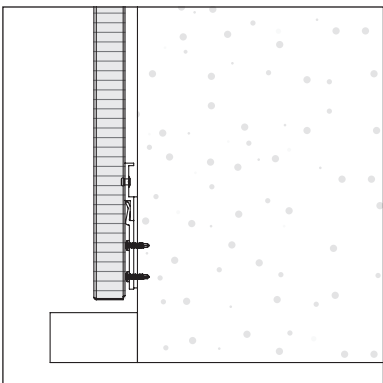
*Parapet*



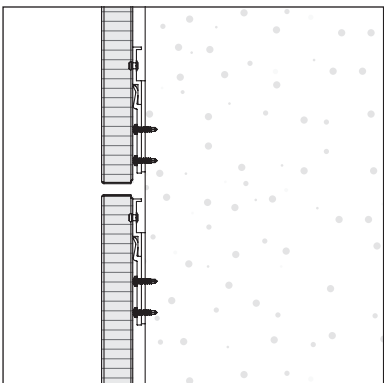
*Window Head*



*Window Sill*

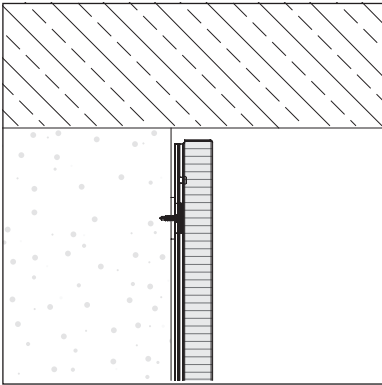


*Sill*

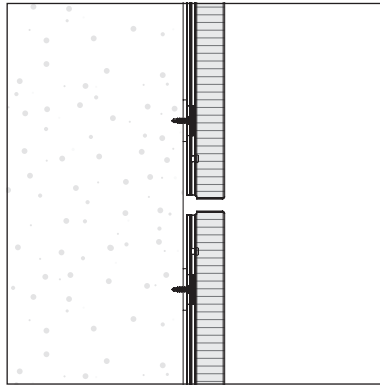


*Horizontal Joint*

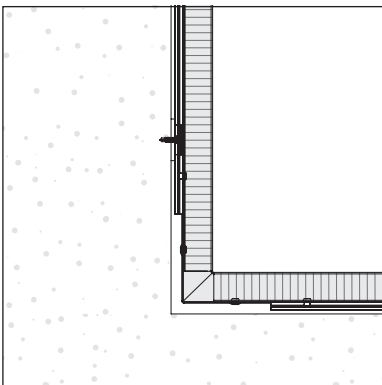
VERTICAL SECTION



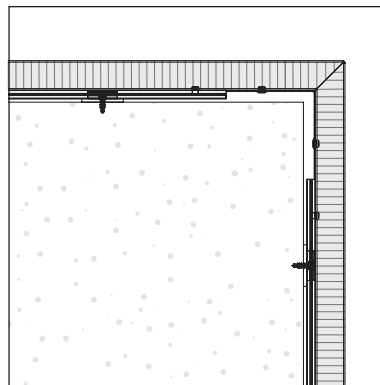
*Wall Jamb*



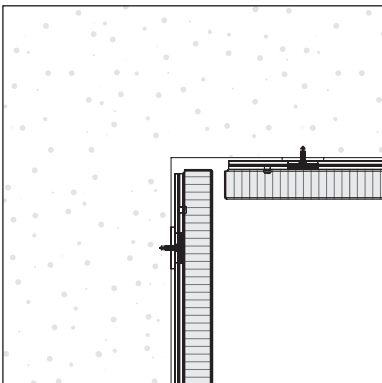
*Vertical Joint*



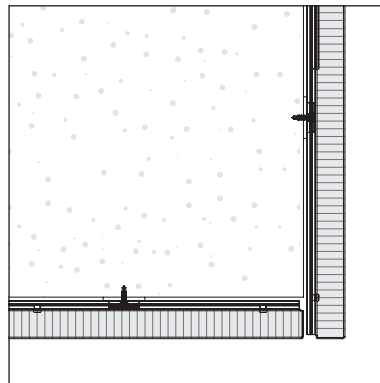
*Cranked Corner Inside*



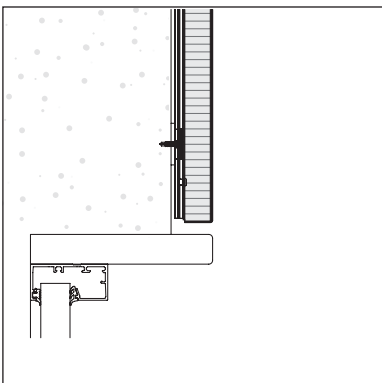
*Cranked Corner Outside*



*Open Corner Inside*



*Open Corner Outside*



*Flush Window*

## HORIZONTAL SECTION

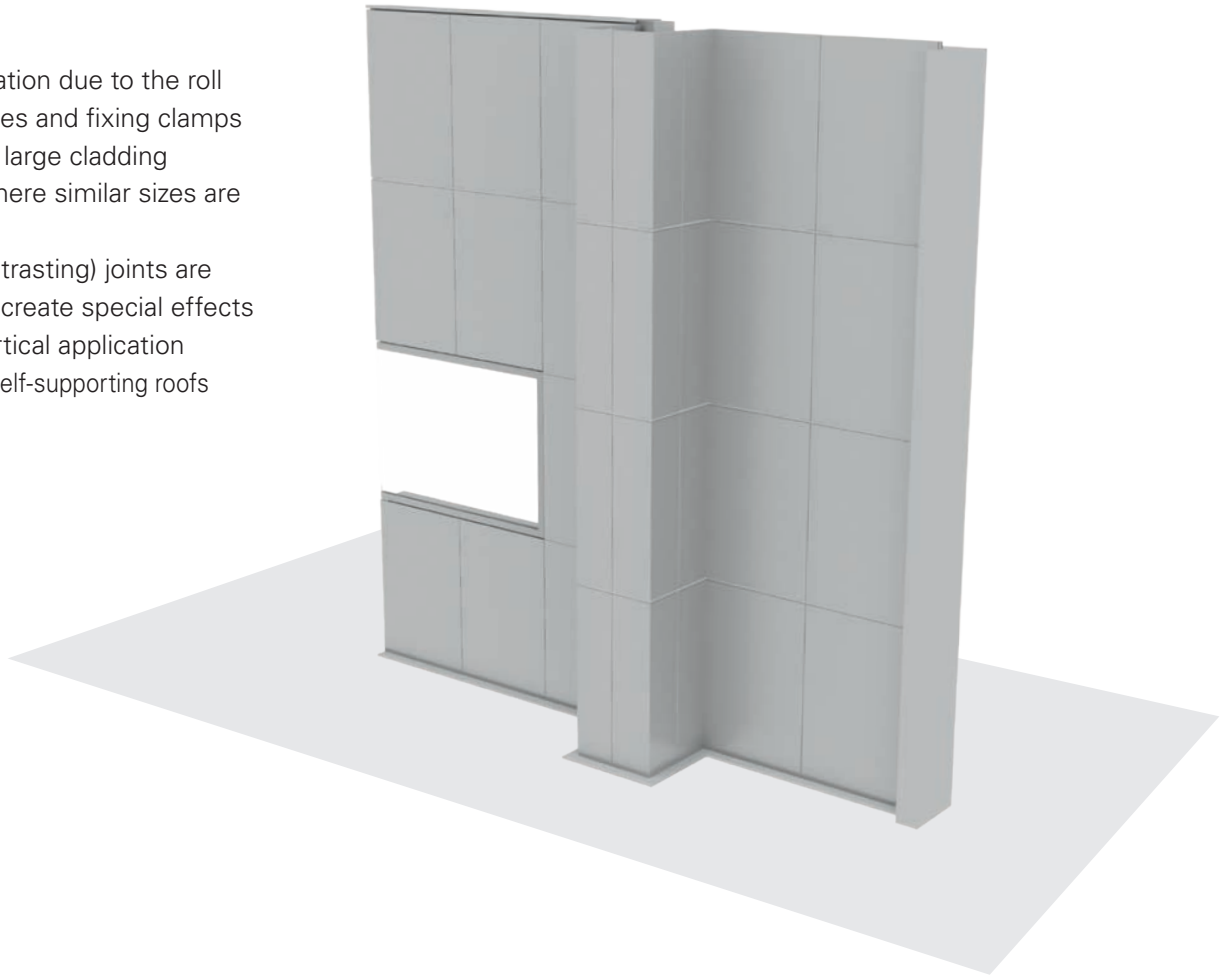


# QuadroClad® QC100

**QuadroClad® QC100 is our EASY panel, its roll formed edge on two sides guarantees an easy installation when using the supplied fixing clamps. The clamp cover provides an optical 25 mm closed joint, which can be coloured to create an even more visual effect.**

## FEATURES

- Easy installation due to the roll formed edges and fixing clamps
- Suitable for large cladding projects (where similar sizes are desirable)
- Closed (contrasting) joints are available to create special effects
- Ideal for vertical application
- Suitable for self-supporting roofs

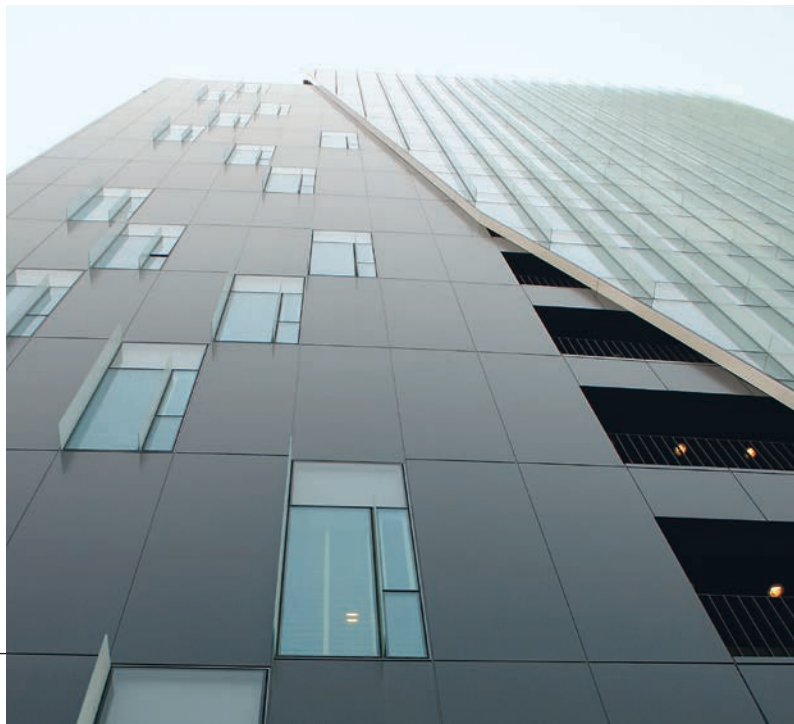


## SPECIFICATION

Maximum panel width	1550 mm
Maximum panel length	6000 mm <sup>(1)</sup>
Panel thickness	25 - 35 mm
Joint width	25 mm
Cavity	Min. 10 mm
Available finishes & materials	See page 4

<sup>(1)</sup> Larger panels on request

Project : Piata Charles de Gaulle, Bucharest, Romania  
 Architect : Westfourth Architecture  
 Product : QuadroClad® QC100



## HUNTERDOUGLAS® QC100 PANEL PARTS

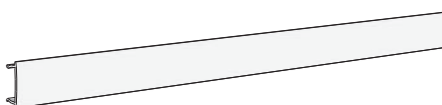


QC100 Panel  
C402000000

## PROFILES



Clamp profile  
C780620000



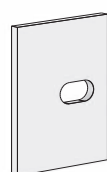
QC100 Cover profile  
C780650000

## ASSEMBLED ELEMENTS

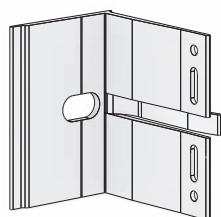


QC100 Panel

## SUBSTRUCTURE EXAMPLE (Non-HD)



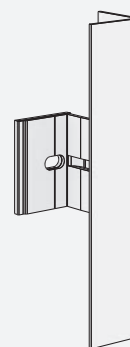
Insulation bracket



Wall bracket



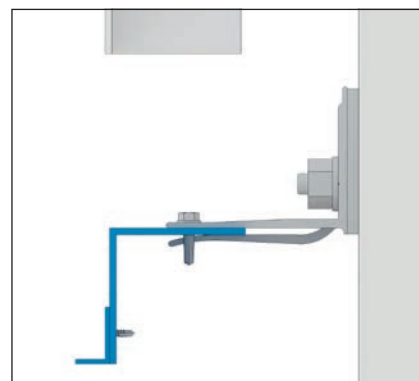
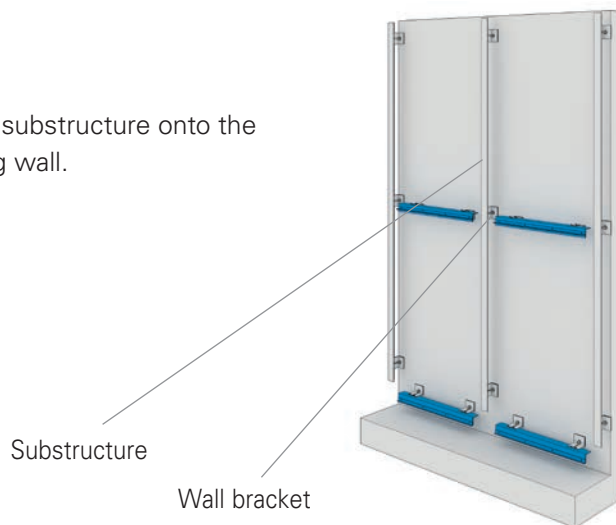
L profile



Substructure L Profile

**INSTALLATION\*****STEP 1**

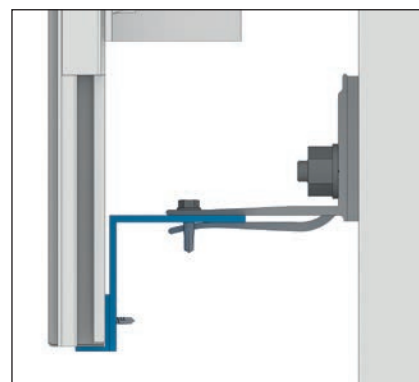
Mount substructure onto the existing wall.



*Substructure and vertical limiter*

**STEP 2**

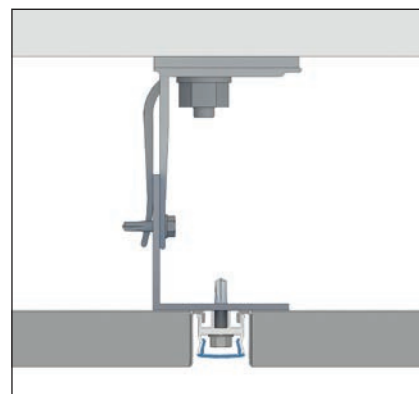
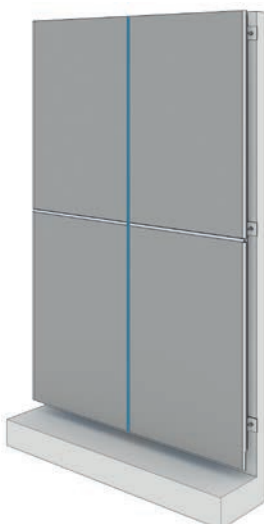
Fix the panels using the clamp profiles.



*Bottom fixing*

**STEP 3**

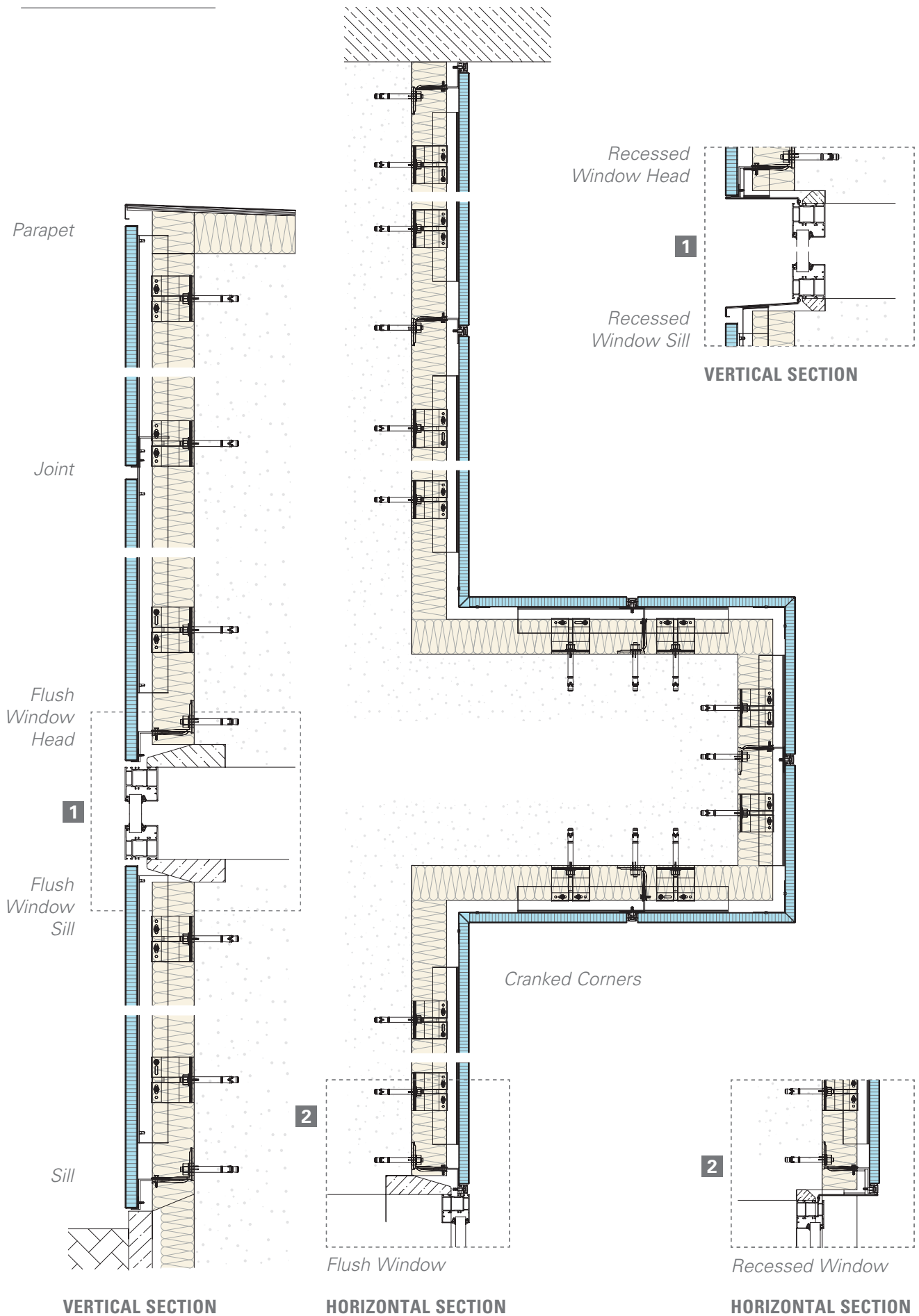
Click the cover profiles onto the clamp profiles.



*Centre fixing (top view)*

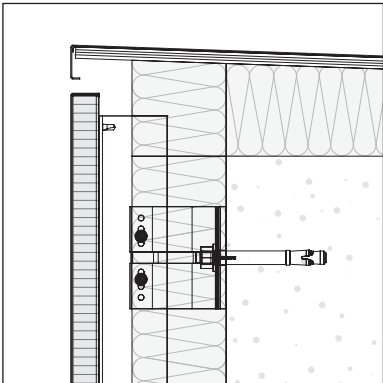
\* For detailed technical information please download our installation manual from the website.

## QC100 SYSTEM DETAILS

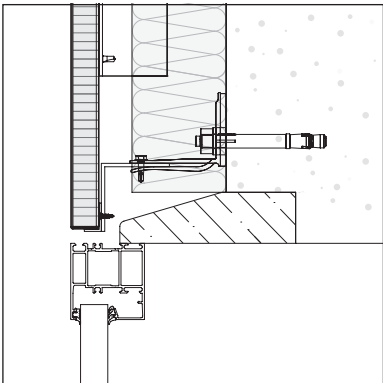




DETAILS

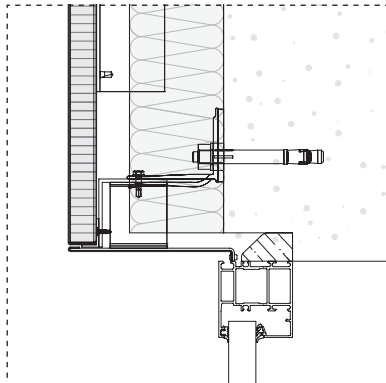


Parapet

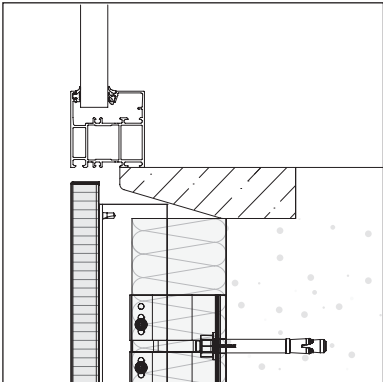


Flush Window Head

Flush or Recessed Window Head

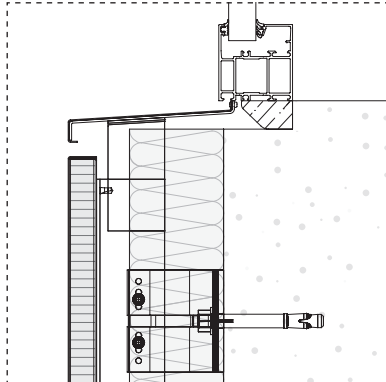


Recessed Window Head

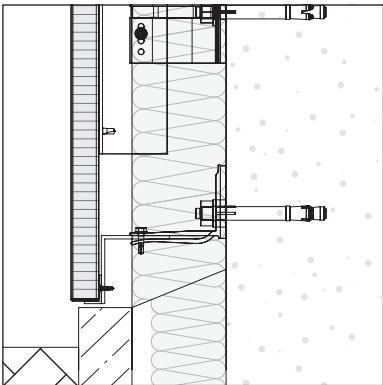


Flush Window Sill

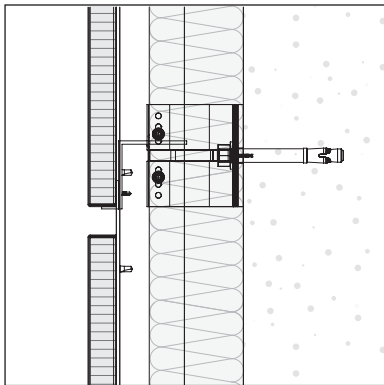
Flush or Recessed Window Sill



Recessed Window Sill

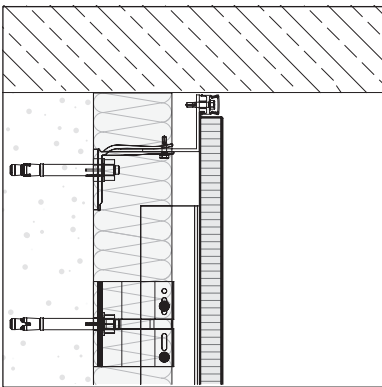


Sill

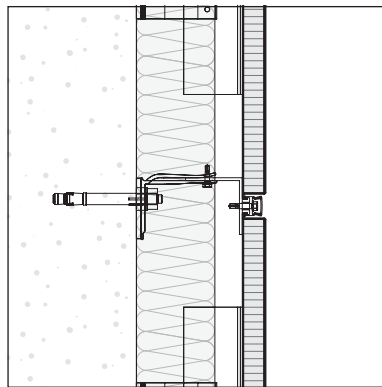


Horizontal Joint

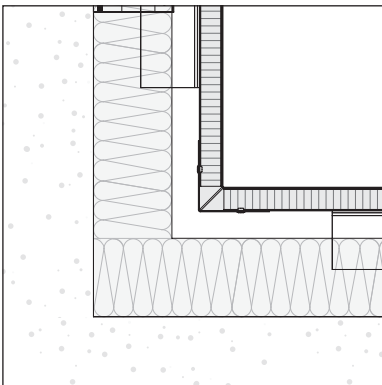
VERTICAL SECTION



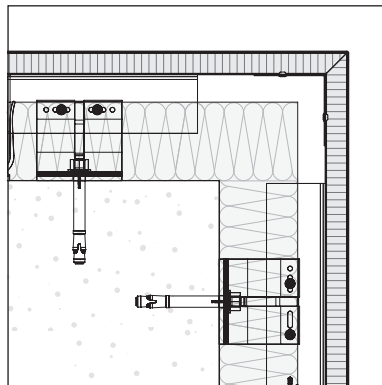
*Wall Jamb*



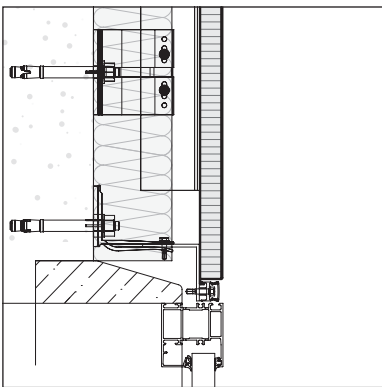
*Vertical Joint*



*Cranked Corner Inside*

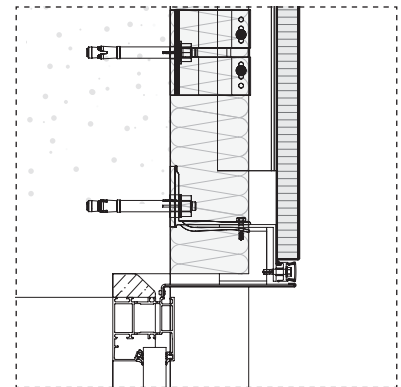
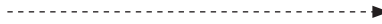


*Cranked Corner Outside*



*Flush Window*

*Flush or Recessed Window*



*Recessed Window*

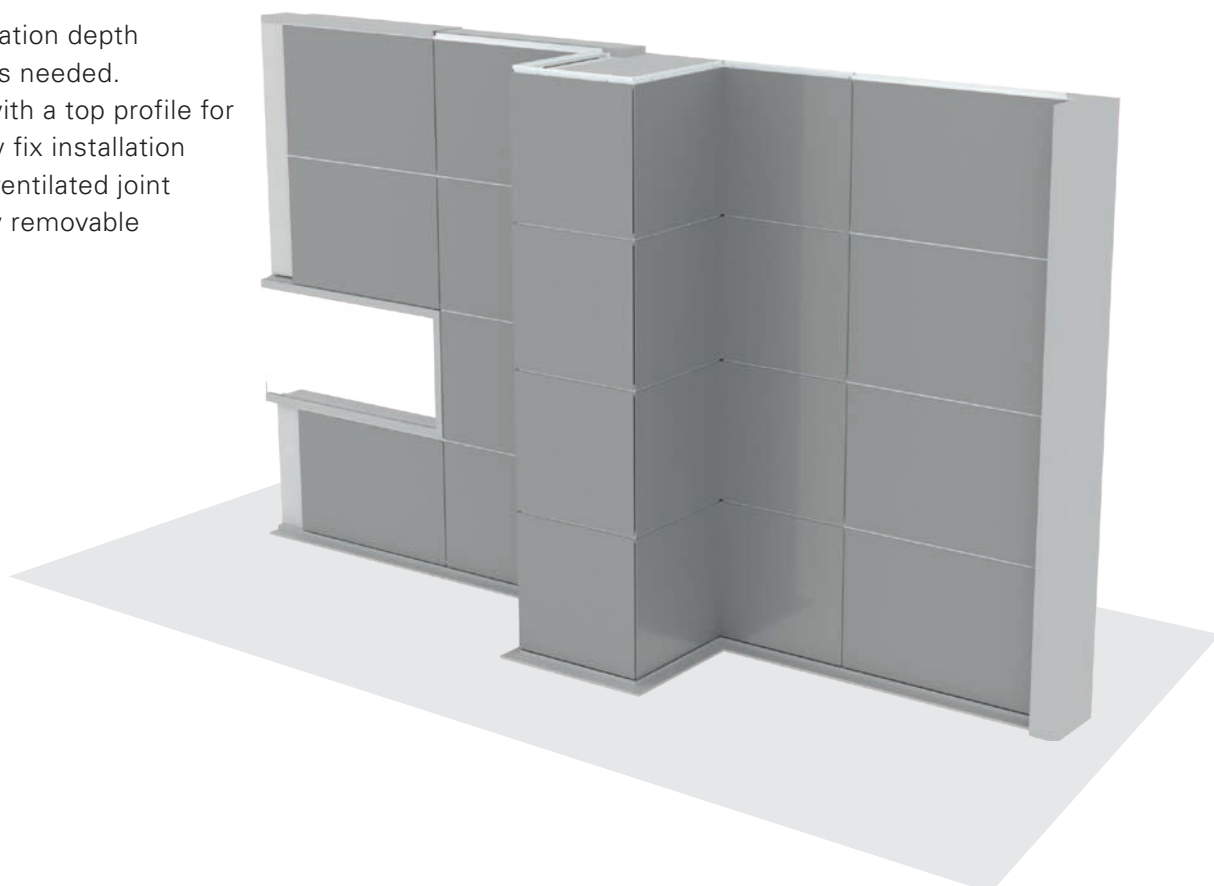
## HORIZONTAL SECTION

# QuadroClad® QC200 Horizontal

**QuadroClad® QC200 is our ULTIMATE panel, it is a fully engineered panel with aluminum extrusion frames on four sides. Our specially designed extrusion top profile ensures easy screw fix installation on every substructure.**

## FEATURES

- Low installation depth
- Fewer parts needed.
- Provided with a top profile for easy screw fix installation
- A closed, ventilated joint
- Individually removable



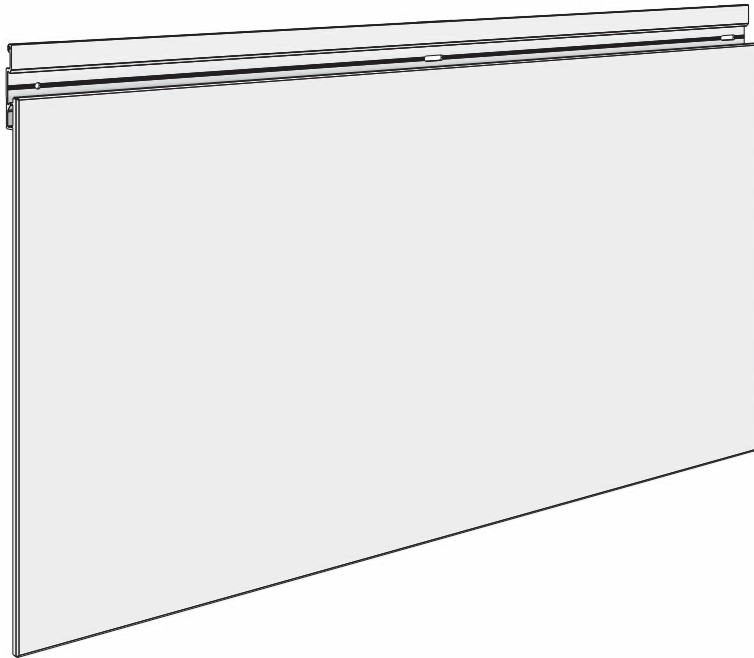
SPECIFICATION	
Maximum panel width	1550 mm
Maximum panel length	6000 mm <sup>(1)</sup>
Panel thickness	25 mm
Joint width	10 - 12.5 - 15 mm
Cavity	Min. 10 mm
Available finishes & materials	See page 4

<sup>(1)</sup> Larger panels on request

Project : Hakrinbank Tourtonne, Paramaribo, Suriname  
 Architect : Aurora Architects  
 Product : QuadroClad® QC200



## HUNTERDOUGLAS® QC200 PANEL PARTS



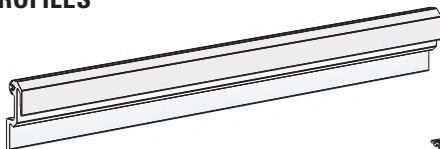
QC200 Panel  
C405850000

## ASSEMBLED ELEMENTS

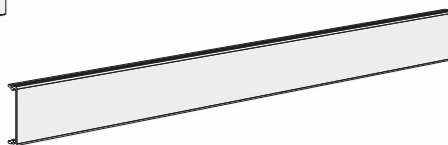


QC200 Panel

## PROFILES

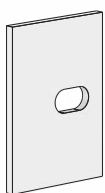


Start profile  
Grey C781877010  
Black C78187ANOZ

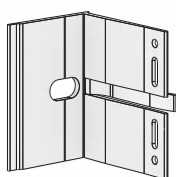


QC200 Cover profile (*optional*)  
C785720000

## SUBSTRUCTURE EXAMPLE (Non-HD)



Insulation bracket



Wall bracket



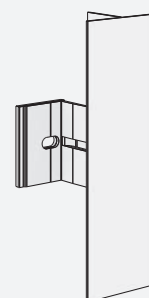
L profile



T profile



Substructure - edge



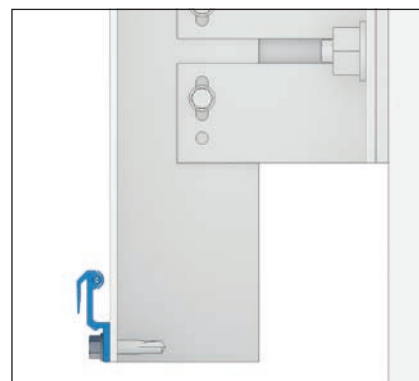
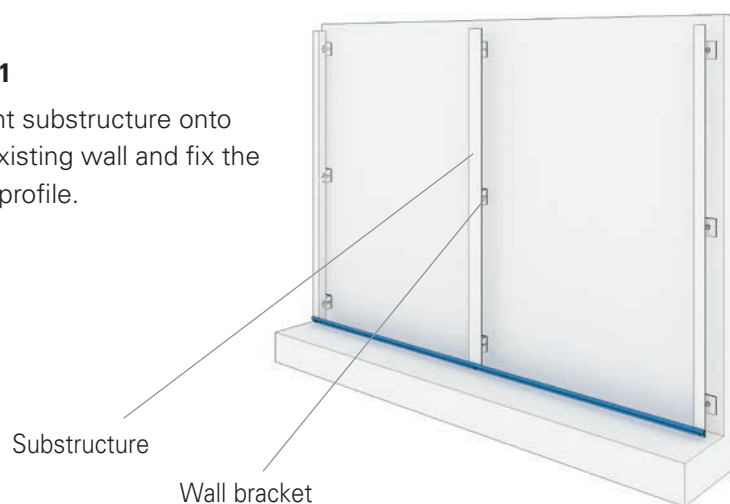
Substructure - joint



## INSTALLATION\*

### STEP 1

Mount substructure onto the existing wall and fix the start profile.



*Start profile*

### STEP 2

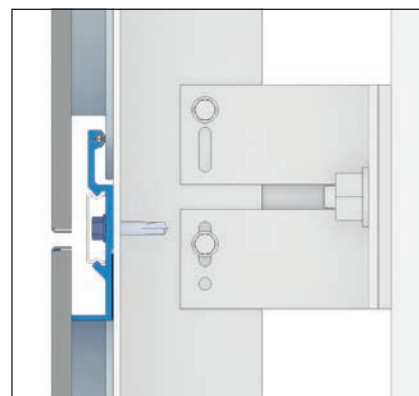
Hook on the first panel into position. Then screw fix the panel using the integrated profile.



*Panel hooked onto the start profile*

### STEP 3

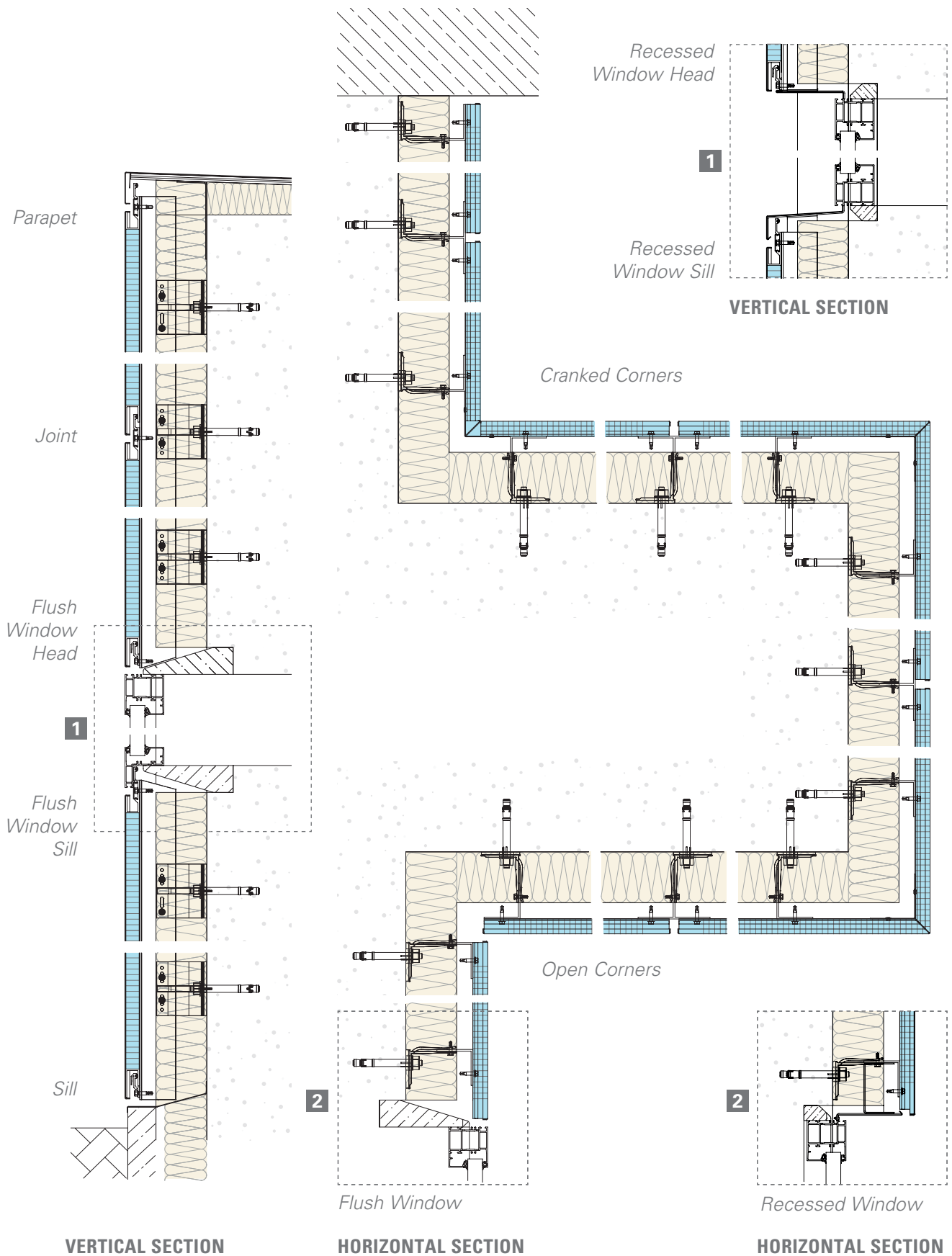
Repeat the process by sliding panels into the integrated profiles.



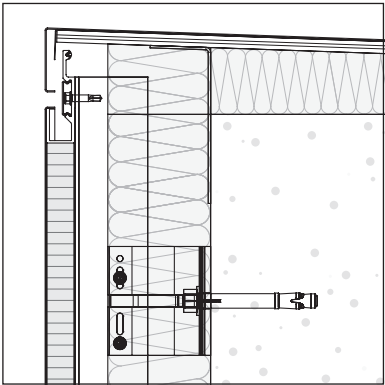
*Centre fixing*

\* For detailed technical information please download our installation manual from the website.

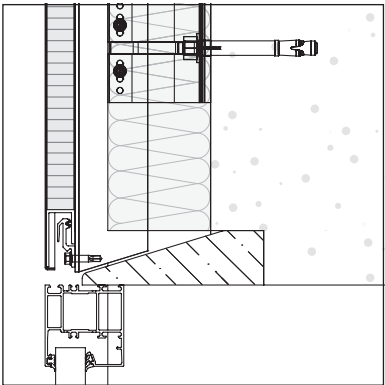
## QC200 SYSTEM DETAILS



DETAILS

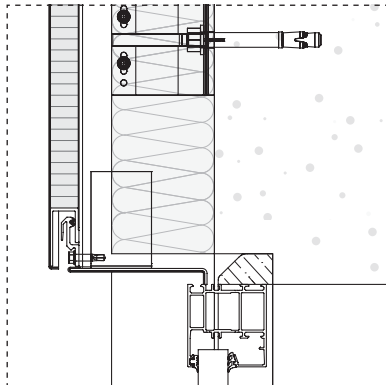


Parapet

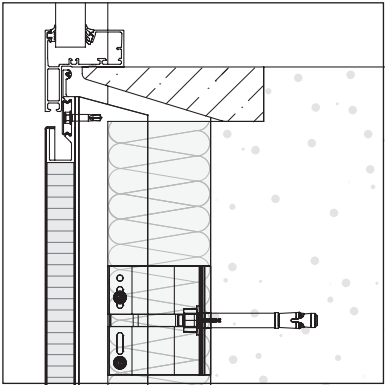


Flush Window Head

Flush or Recessed Window Head

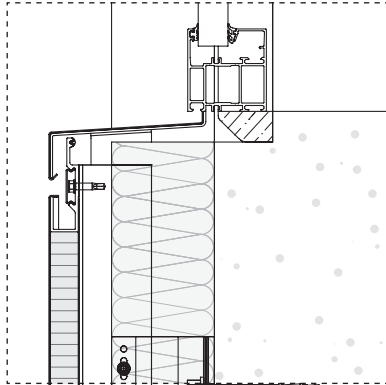


Recessed Window Head

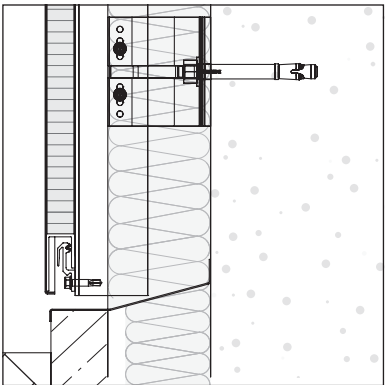


Flush Window Sill

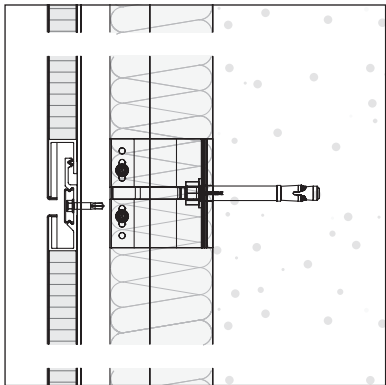
Flush or Recessed Window Sill



Recessed Window Sill

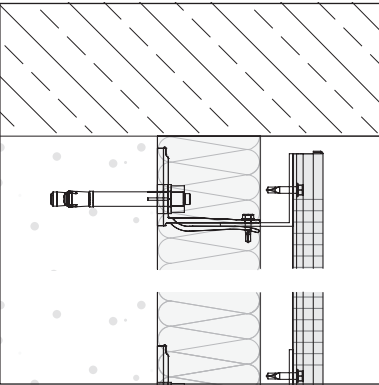


Sill

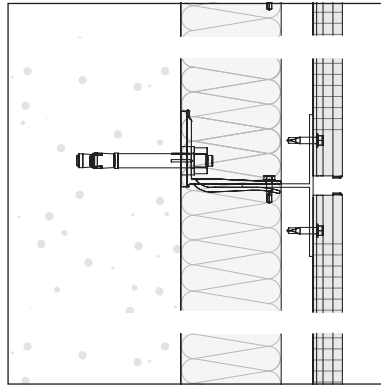


Horizontal Joint

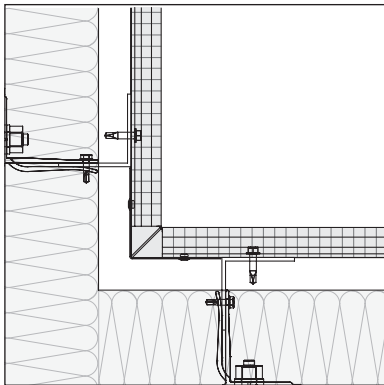
VERTICAL SECTION



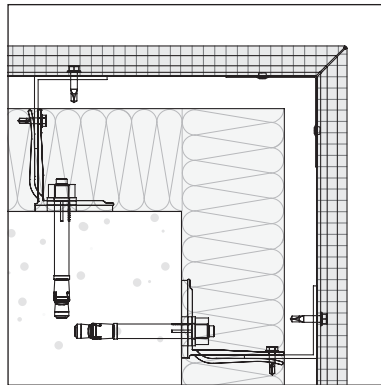
*Wall Jamb*



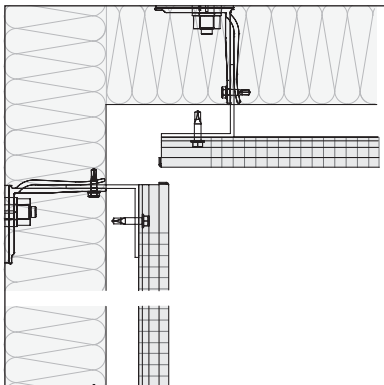
*Vertical Joint*



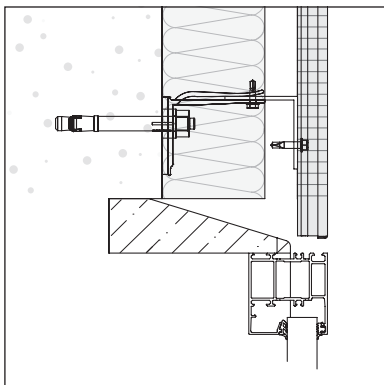
*Cranked Corner Inside*



*Cranked Corner Outside*

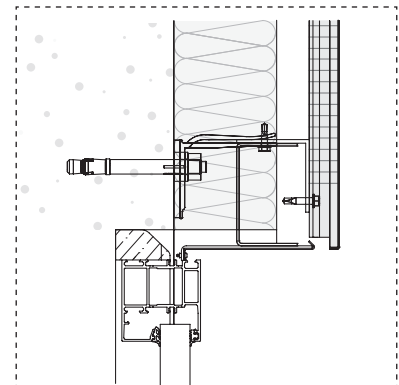
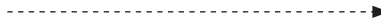


*Open Corner Inside*



*Flush Window*

*Flush or Recessed Window*



*Recessed Window*

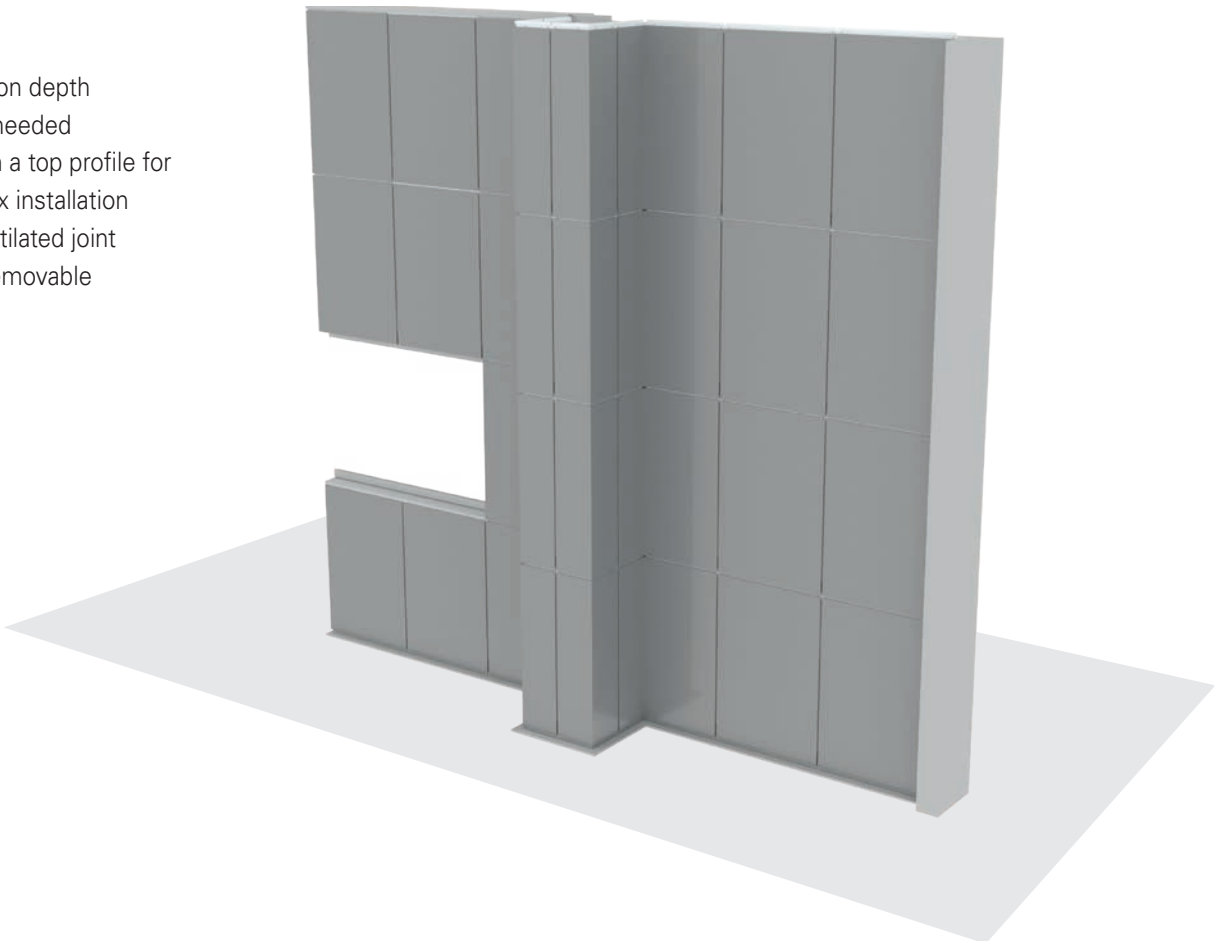
## HORIZONTAL SECTION

# QuadroClad® QC200 Vertical

**QuadroClad® QC200 is our ULTIMATE panel, it is a fully engineered panel with aluminum extrusion frames on four sides. Our specially designed extrusion top profile ensures easy screw fix installation on every substructure.**

### FEATURES

- Low installation depth
- Fewer parts needed
- Provided with a top profile for easy screw fix installation
- A closed, ventilated joint
- Individually removable



SPECIFICATION	
Maximum panel width	1550 mm
Maximum panel length	6000 mm <sup>(1)</sup>
Panel thickness	25 mm
Joint width	10 - 12.5 - 15 mm
Cavity	Min. 10 mm
Available finishes & materials	See page 4

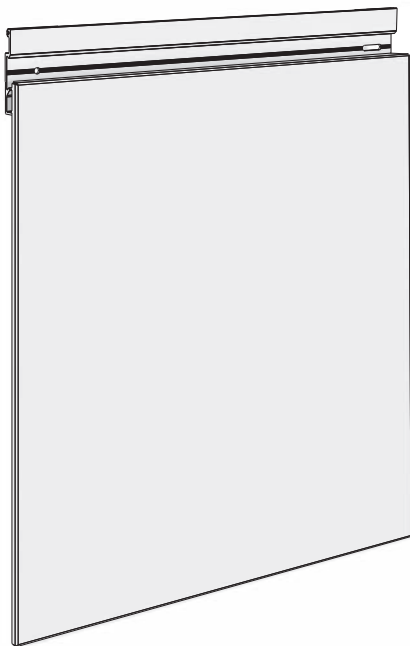
<sup>(1)</sup> Larger panels on request

Project : ANB Bank - Cherry Creek North, Denver, USA  
Architect: Open Studio Architecture  
Product : QuadroClad® QC200



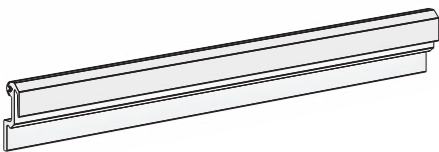


## HUNTERDOUGLAS® QC200 PANEL PARTS

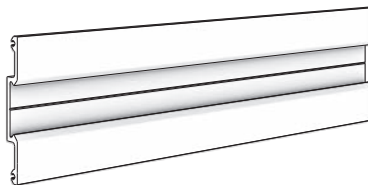


QC200 Panel  
C405800000

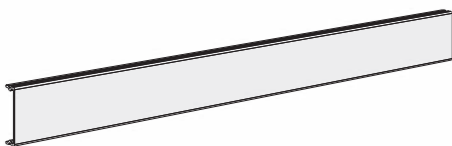
### PROFILES



Start profile  
Grey C781877010  
Black C78187ANOZ

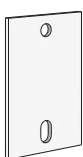


Omega profile  
Grey C781857010  
Black C78185ANOZ



QC200 Cover profile  
C785720000

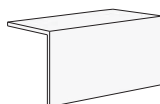
### SUBSTRUCTURE EXAMPLE (Non-HD)



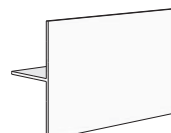
Insulation bracket



Wall bracket



L profile

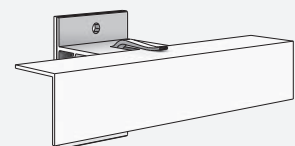


T profile

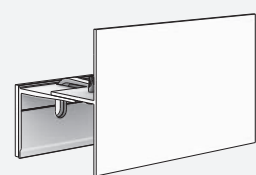
## ASSEMBLED ELEMENTS



QC200 Panel



Substructure L profile

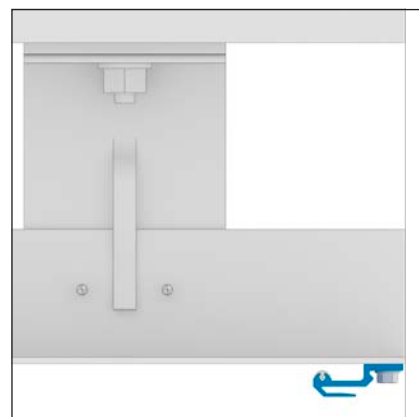
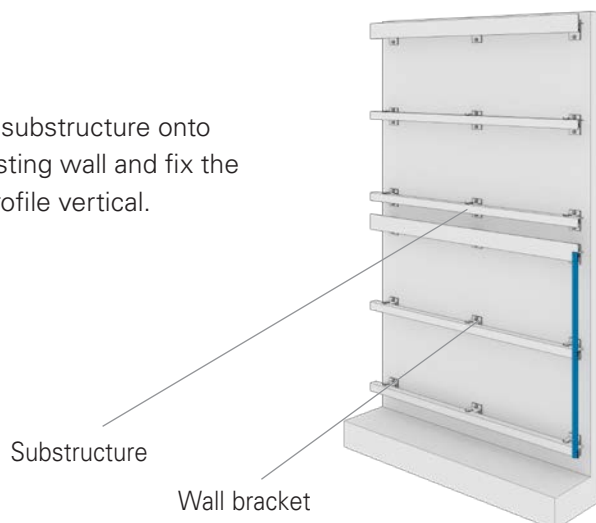


Substructure T profile

## INSTALLATION\*

### STEP 1

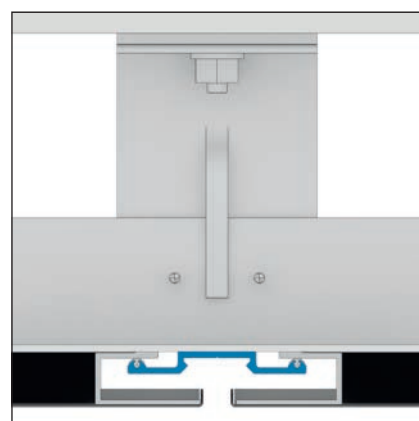
Mount substructure onto the existing wall and fix the start profile vertical.



Start profile (top view)

### STEP 2

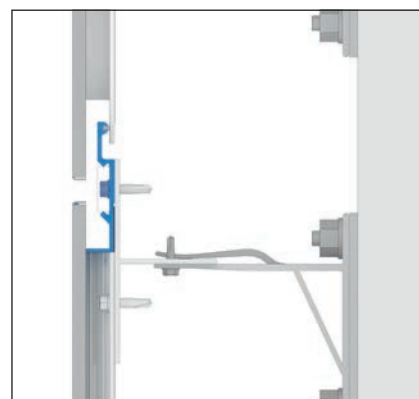
Hook on the first panel into the Omega profile and then screw fix the panel using the integrated profile.



Omega profile (top view)

### STEP 3

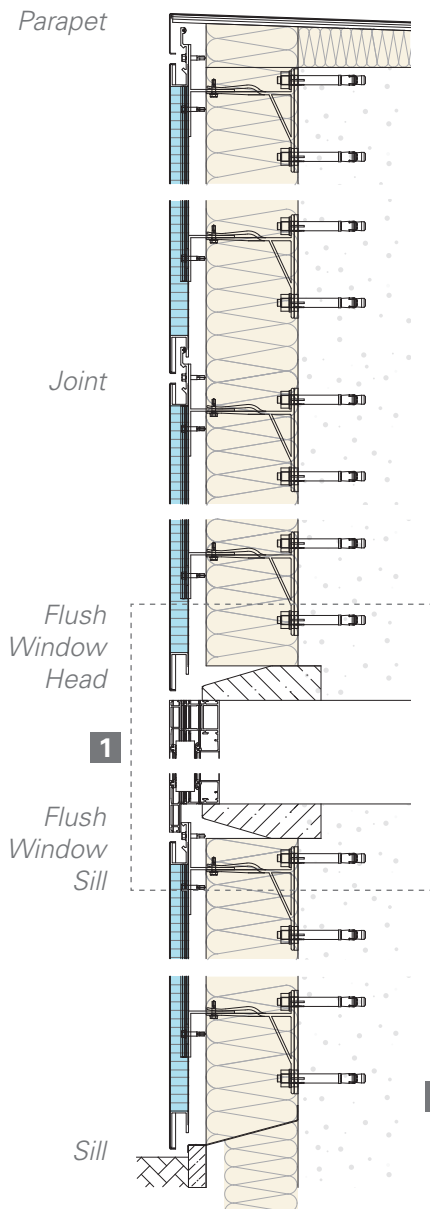
Repeat the process by sliding the panels into the integrated profiles.



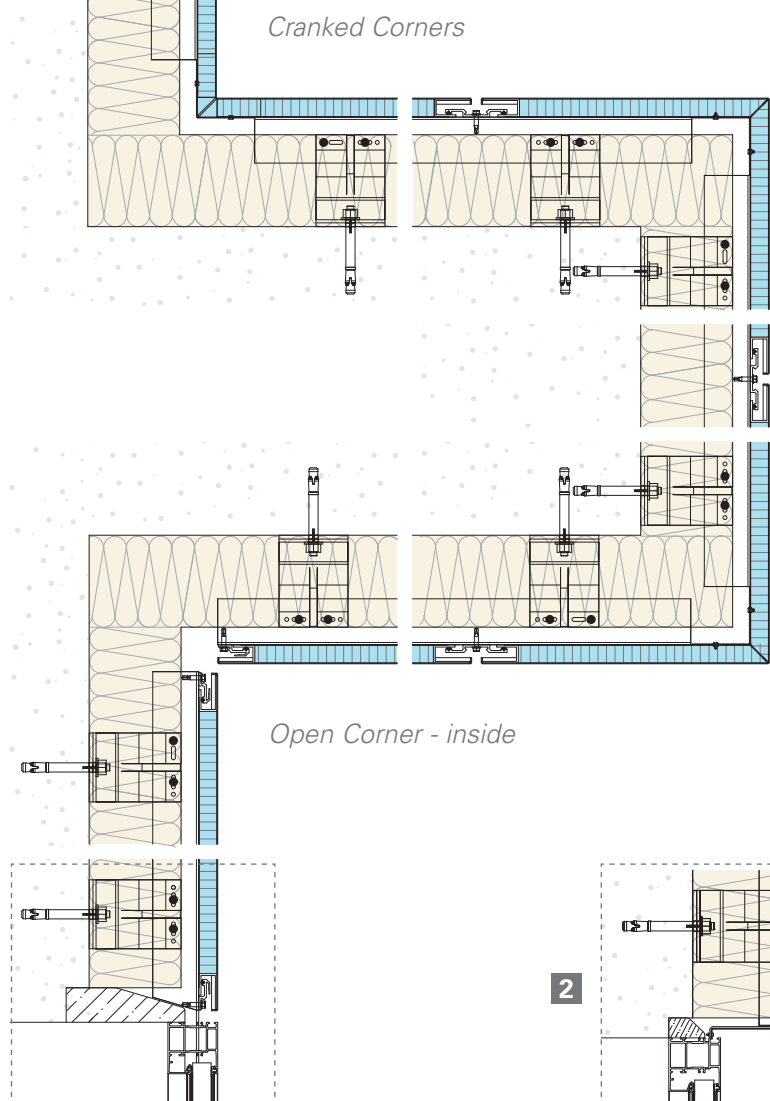
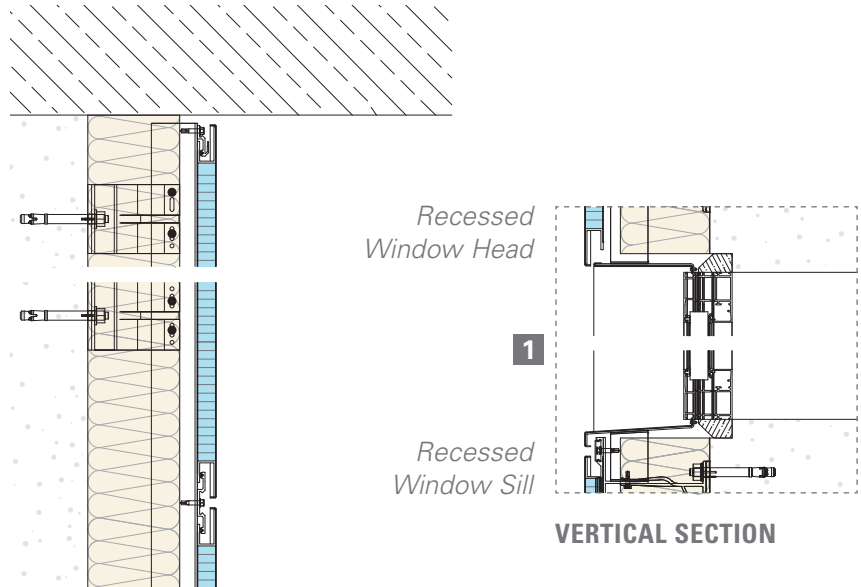
Centre fixing

\* For detailed technical information please download our installation manual from the website.

## QC200 SYSTEM DETAILS



VERTICAL SECTION



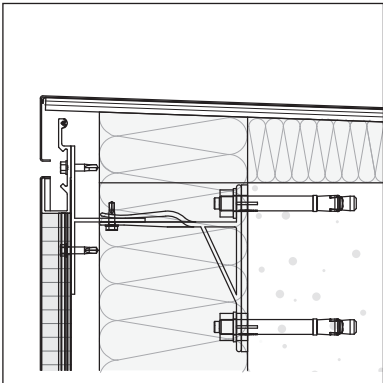
Flush Window

HORIZONTAL SECTION

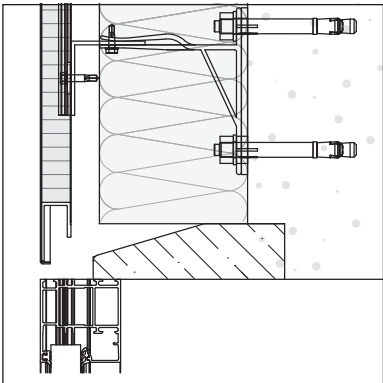
Recessed Window

HORIZONTAL SECTION

DETAILS

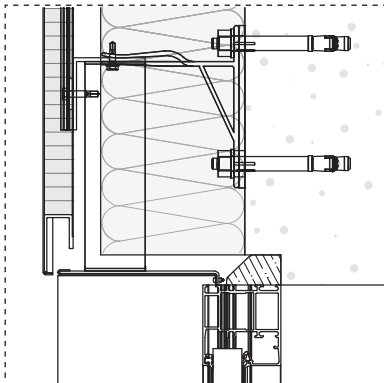


Parapet

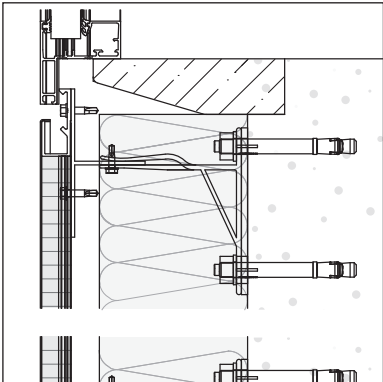


Flush Window Head

Flush or Recessed Window Head

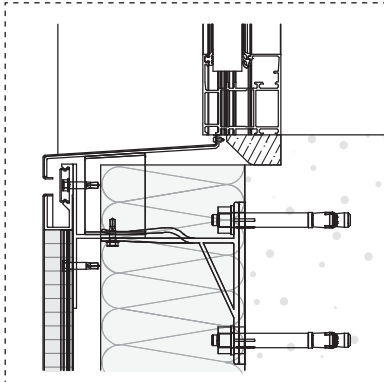


Recessed Window Head

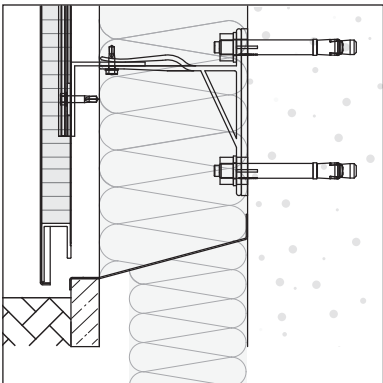


Flush Window Sill

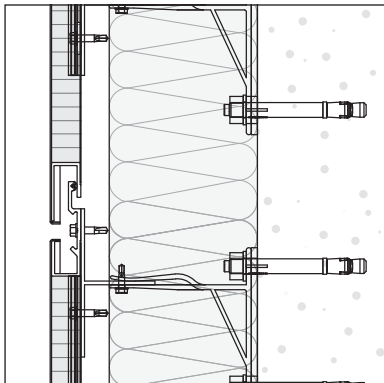
Flush or Recessed Window Sill



Recessed Window Sill

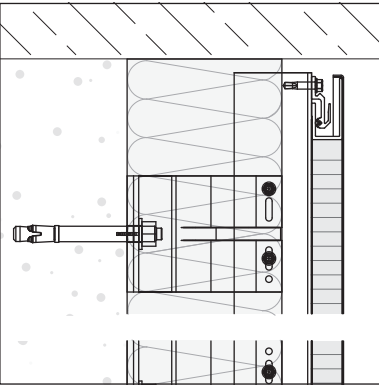


Sill

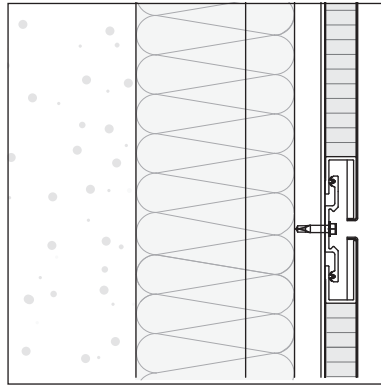


Horizontal Joint

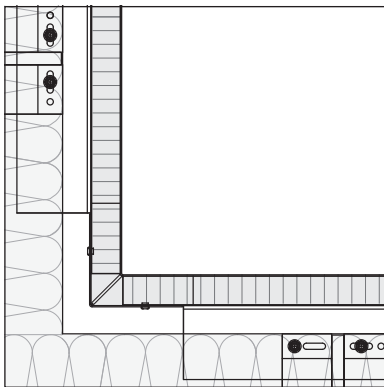
VERTICAL SECTION



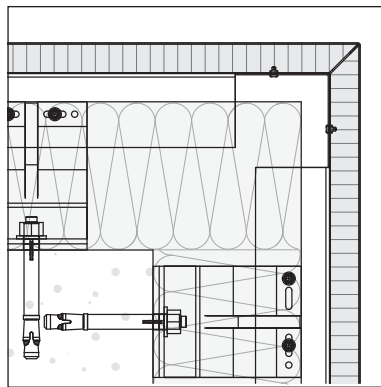
*Wall Jamb*



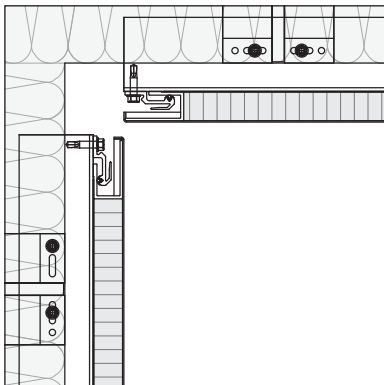
*Vertical Joint*



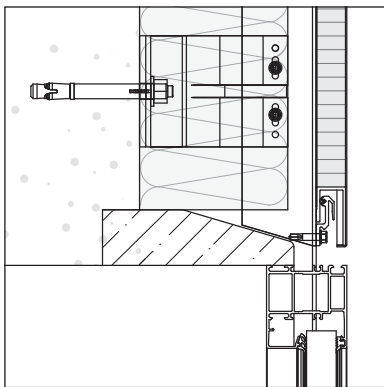
*Cranked Corner Inside*



*Cranked Corner Outside*

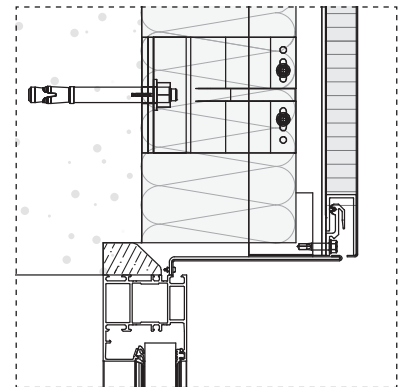
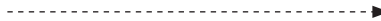


*Open Corner - Inside*



*Flush Window*

*Flush or Recessed Window*



*Recessed Window*

## HORIZONTAL SECTION

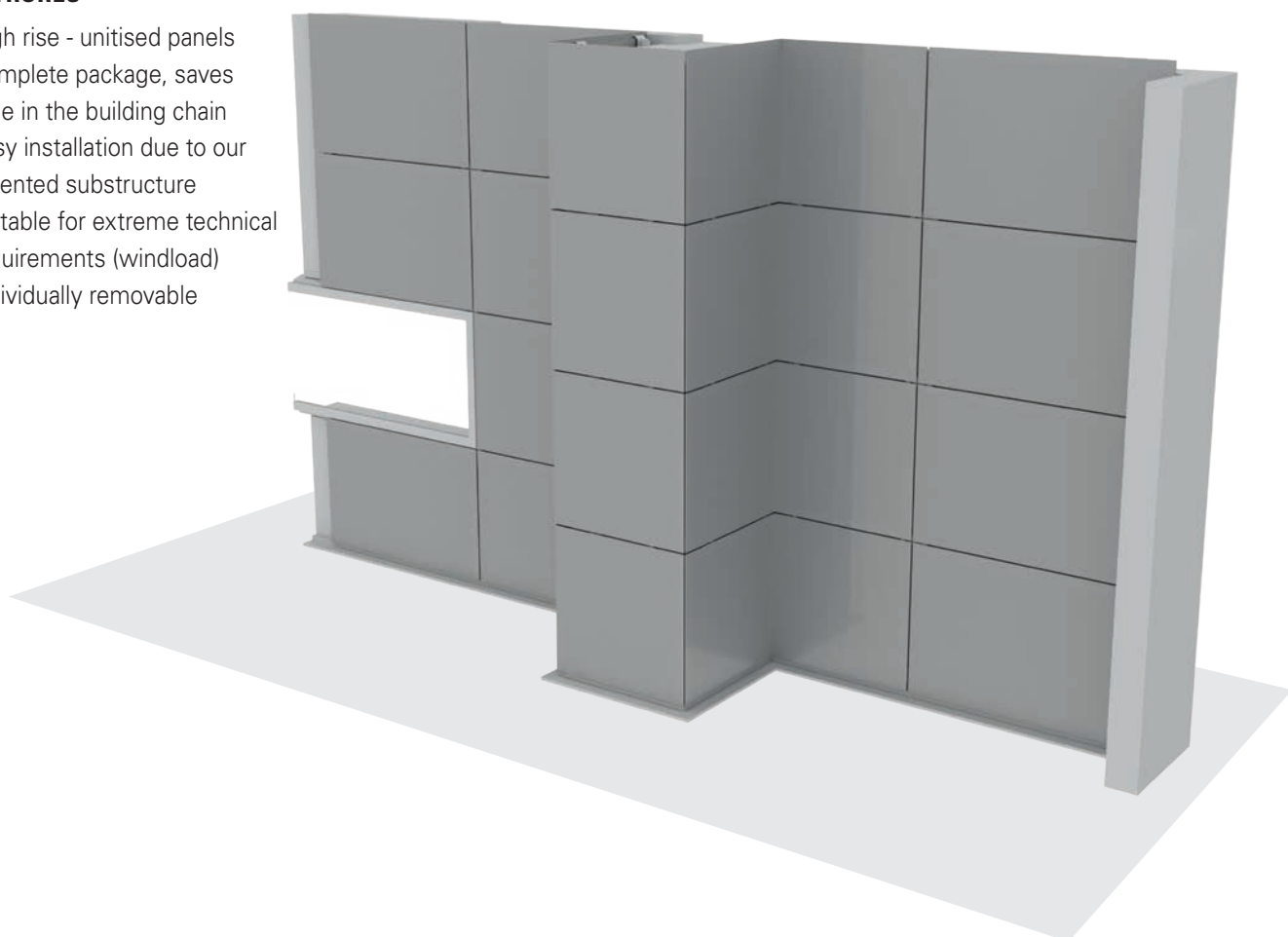


# QuadroClad® QC300 Horizontal

**QuadroClad® QC300 is our COMPLETE system and as its name suggests is our most complete façade solution. QC300 features free hanging panels with a ventilated cavity, with open joints that are designed to reduce surface wind loads.**

## FEATRURES

- High rise - unitised panels
- Complete package, saves time in the building chain
- Easy installation due to our patented substructure
- Suitable for extreme technical requirements (windload)
- Individually removable



## SPECIFICATION

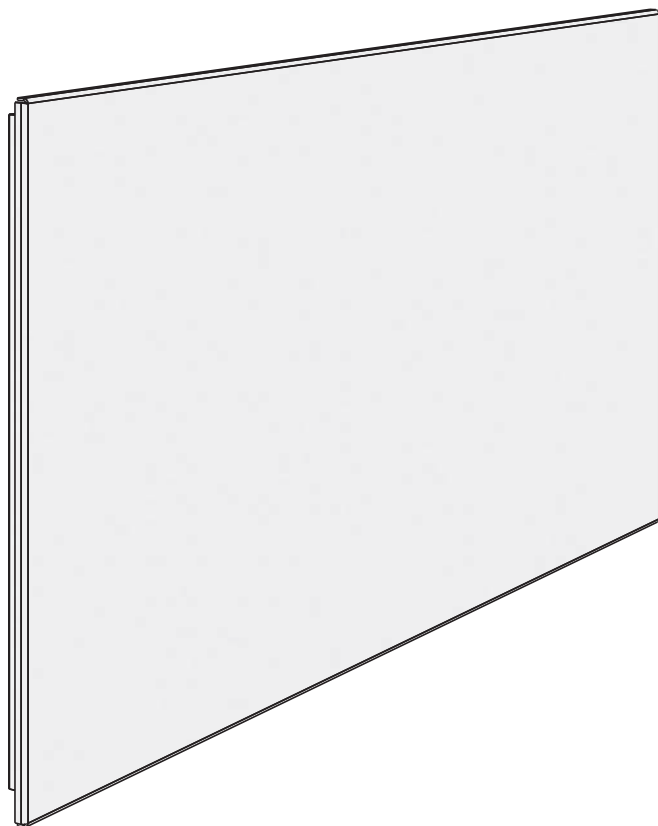
Maximum panel width	1550 mm
Maximum panel length	6000 mm <sup>(1)</sup>
Panel thickness	25 mm
Joint width	10 mm
Cavity	Min. 10 mm
Available finishes & materials	See page 4

<sup>(1)</sup> Larger panels on request

Project : Centre for Chemistry and Biomedicine, Innsbruck, Austria  
 Architect : Din A4 Architecture  
 Product : QuadroClad® QC300



## HUNTERDOUGLAS® QC300 PANEL PARTS



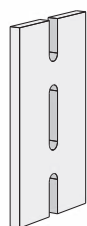
QC300 Panel  
C405570000

## ASSEMBLED ELEMENTS

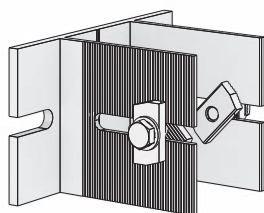


**QC300 Panel**

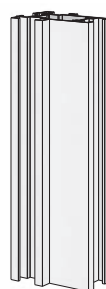
## HUNTERDOUGLAS® SUBSTRUCTURE



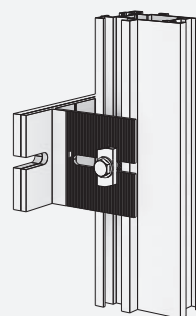
Insulation bracket  
C793200000



Wall bracket 100 - 150 mm  
C782310000

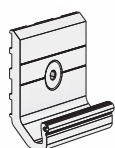


Standard rail  
C782300000

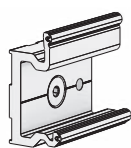


**Substructure**

## HUNTERDOUGLAS® CLAMPS



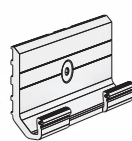
Bottom fixing  
plate mid  
C781490000



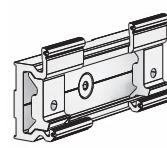
Centre fixing  
plate mid  
C781710000



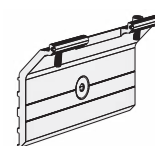
Top fixing  
plate mid  
C781750000



Bottom fixing  
plate joint  
C781480000



Centre fixing  
plate joint  
C781700000

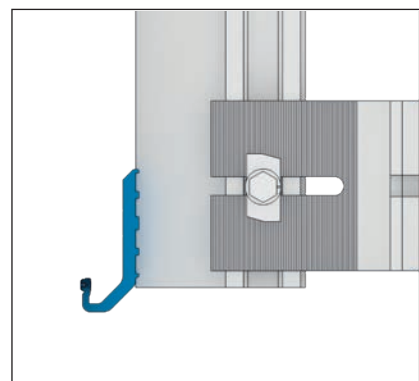
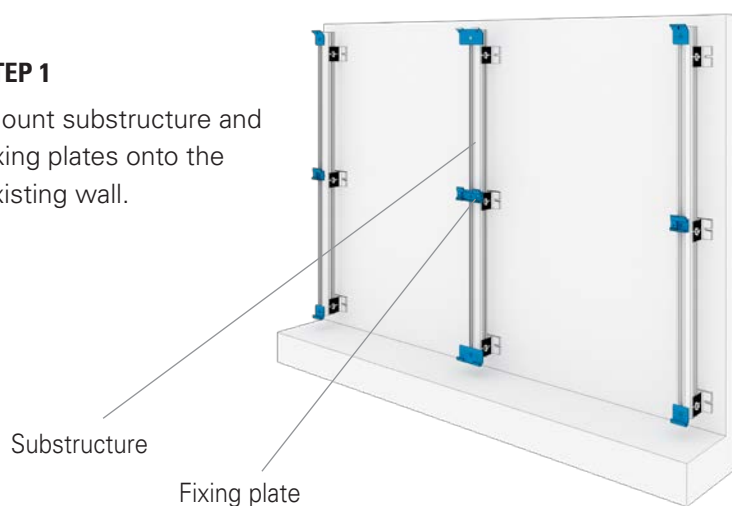


Top fixing  
plate joint  
C781740000

## INSTALLATION\*

### STEP 1

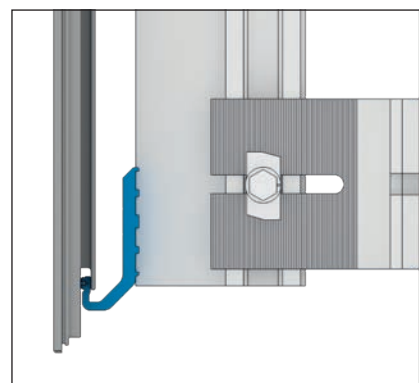
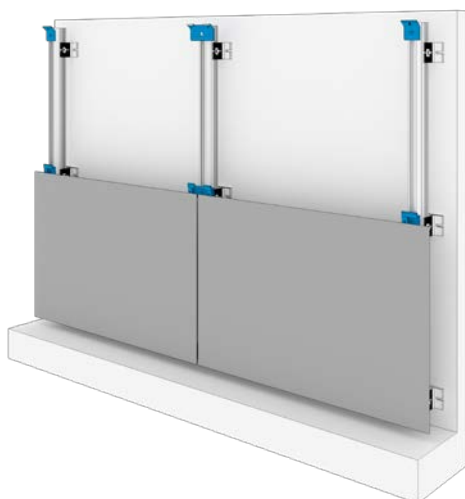
Mount substructure and fixing plates onto the existing wall.



*Bottom fixing*

### STEP 2

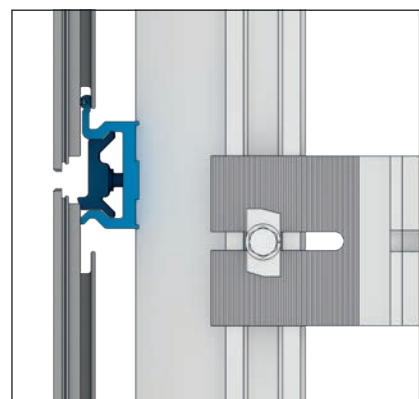
Lock the panels onto the fixing plates using the integrated retainers.



*Panel hooked onto the bottom fixing*

### STEP 3

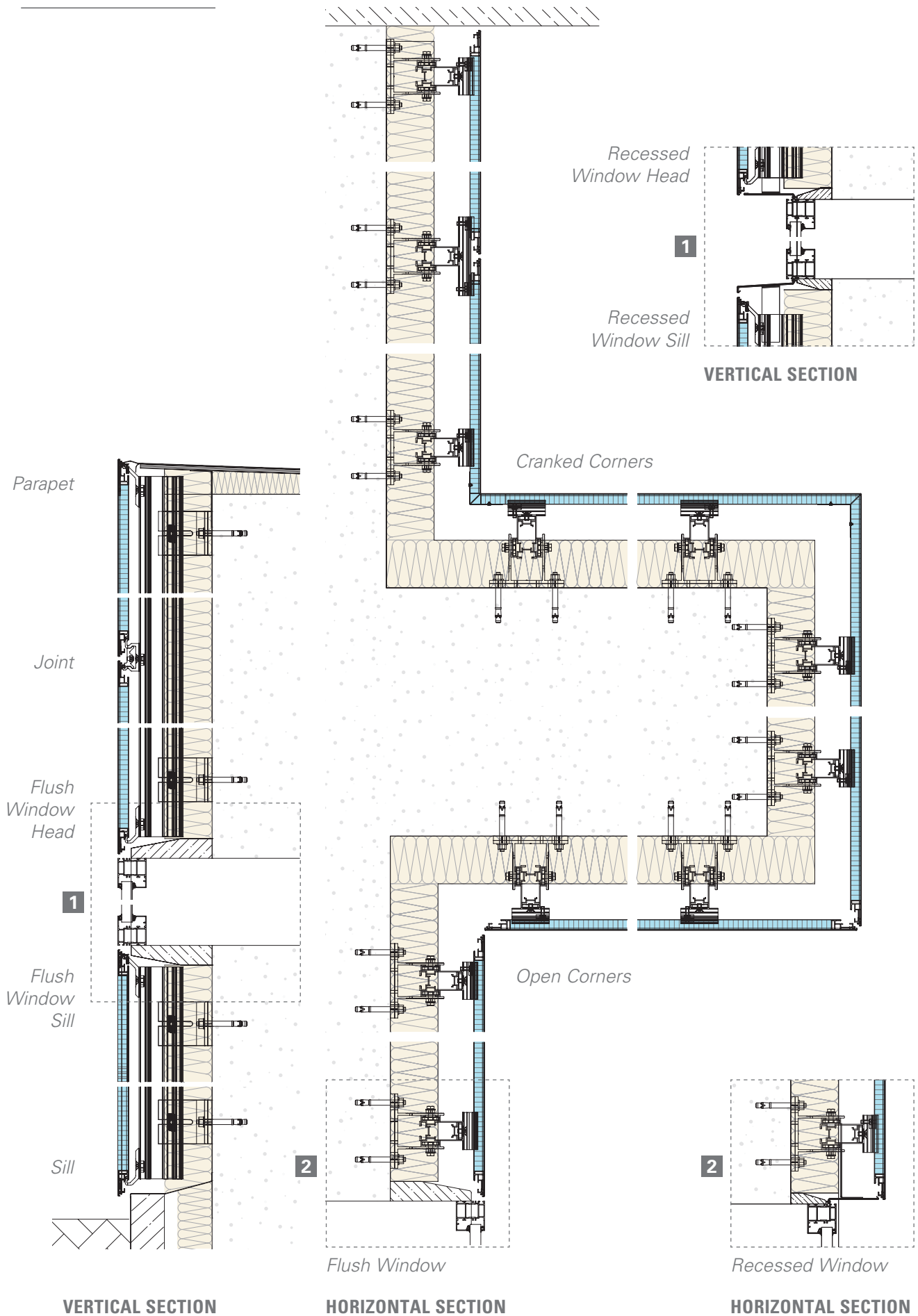
Repeat the process by fixing the panels.



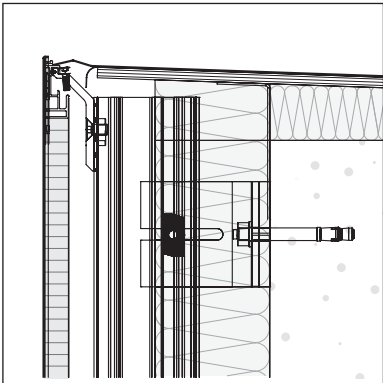
*Centre fixing*

\* For detailed technical information please download our installation manual from the website.

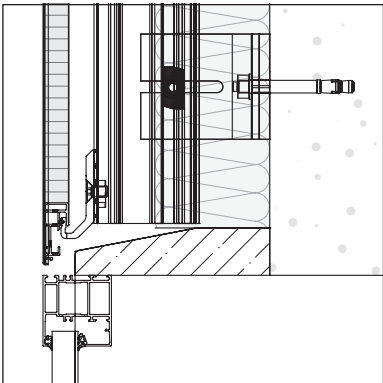
## QC300 SYSTEM DETAILS



DETAILS

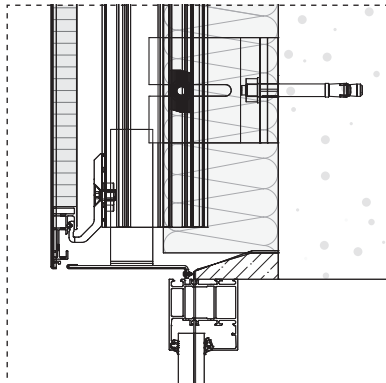


*Parapet*

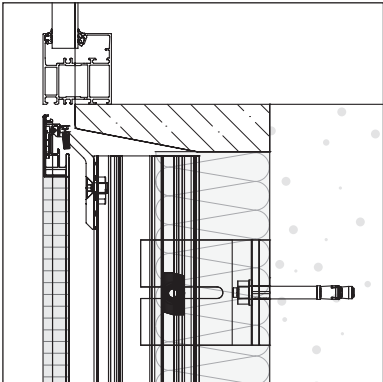


*Flush Window Head*

*Flush or Recessed Window Head*

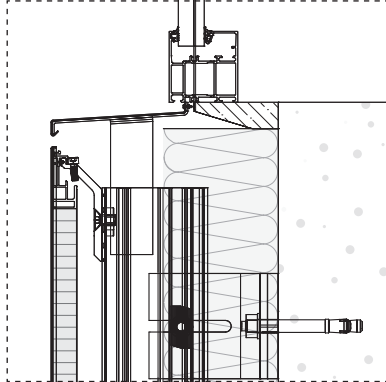


*Recessed Window Head*

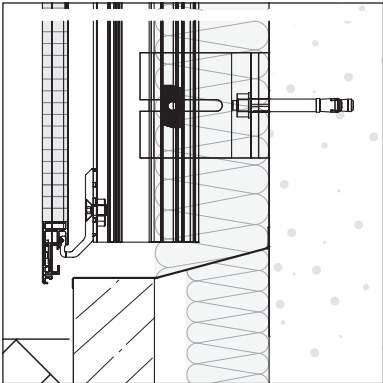


*Flush Window Sill*

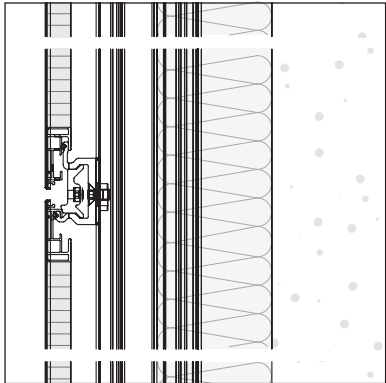
*Flush or Recessed Window Sill*



*Recessed Window Sill*

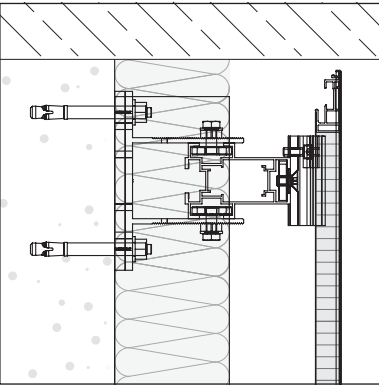


*Sill*

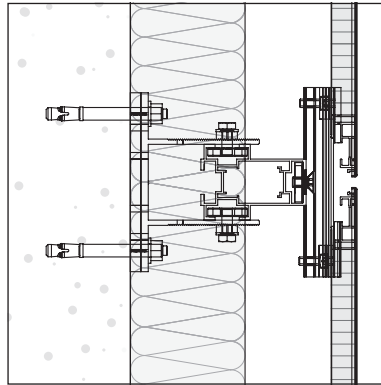


*Horizontal Joint*

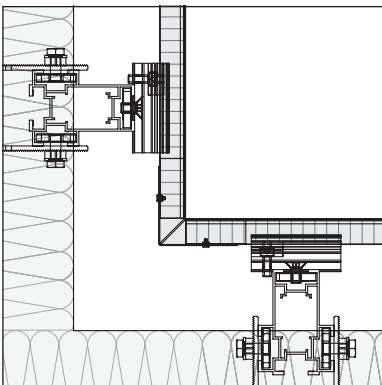
VERTICAL SECTION



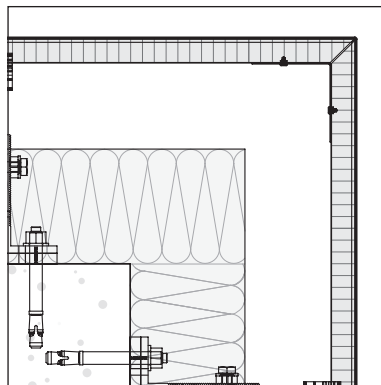
*Wall Jamb*



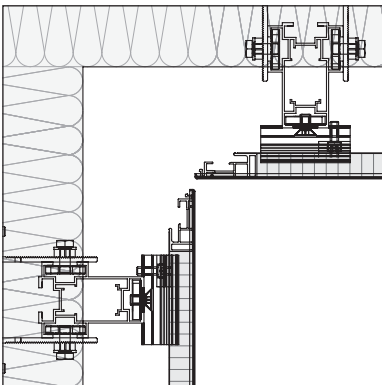
*Vertical Joint*



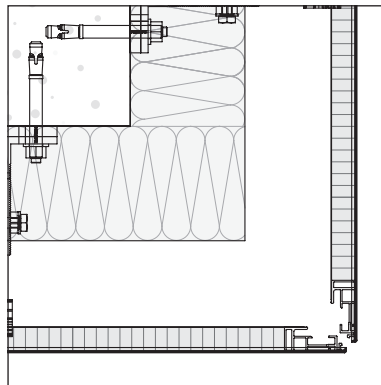
*Cranked Corner Inside*



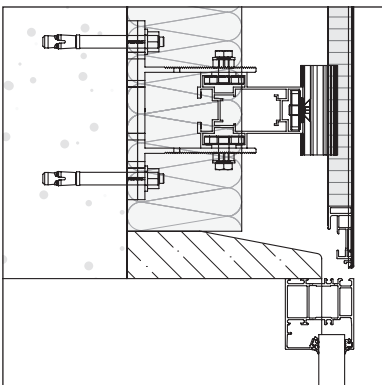
*Cranked Corner Outside*



*Open Corner Inside*

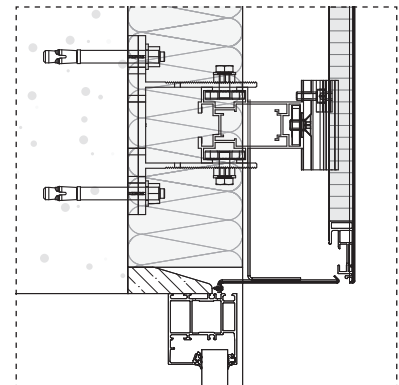


*Open Corner Outside*



*Flush Window*

*Flush or Recessed Window*



*Recessed Window*

**HORIZONTAL SECTION**

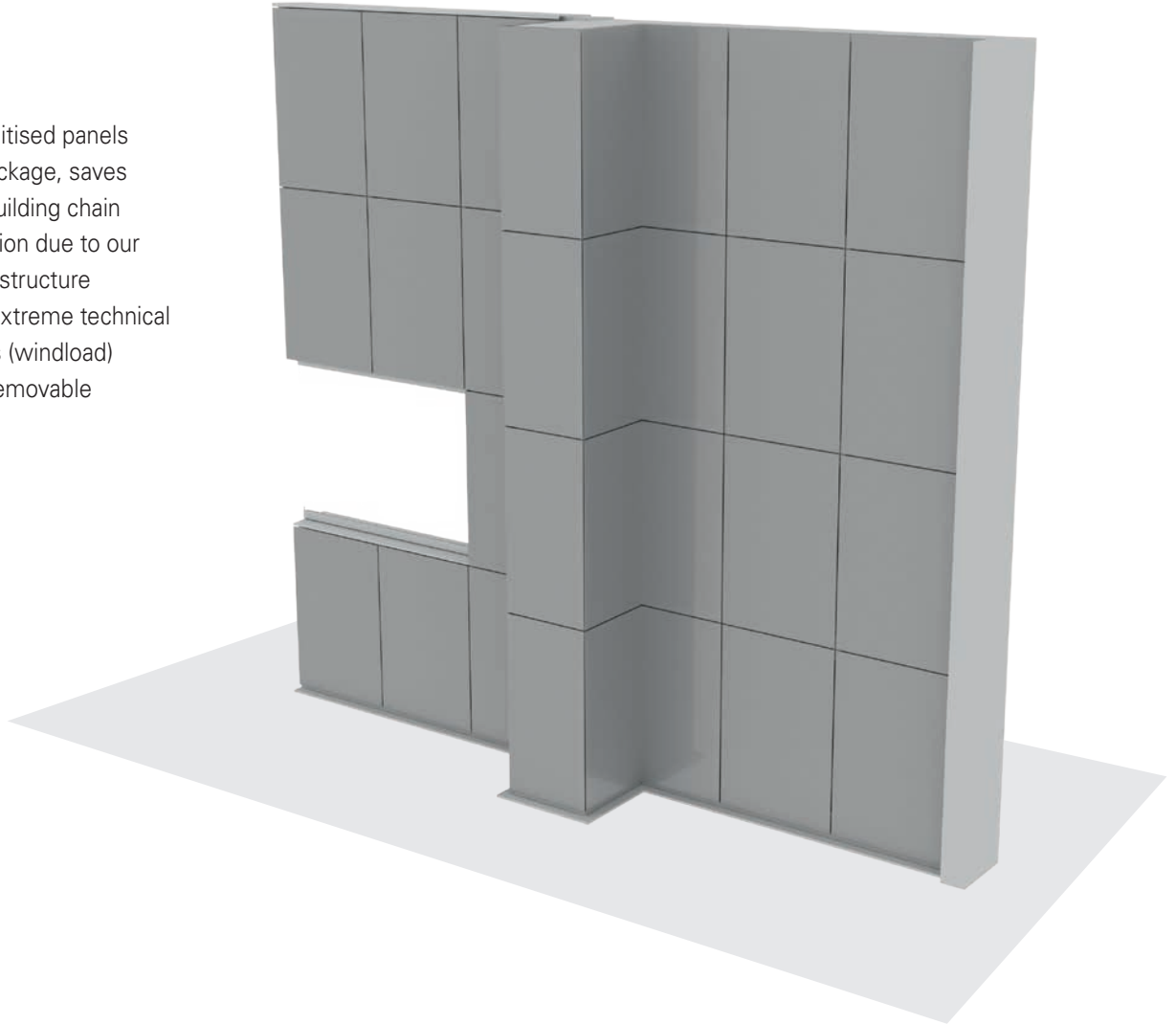


# QuadroClad® QC300 Vertical

**QuadroClad® QC300 is our COMPLETE system and as its name suggests is our most complete façade solution. QC300 features free hanging panels with a ventilated cavity, with open joints that are designed to reduce surface wind loads.**

## FEATURES

- High rise - unitised panels
- Complete package, saves time in the building chain
- Easy installation due to our patented substructure
- Suitable for extreme technical requirements (windload)
- Individually removable



## SPECIFICATION

Maximum panel width	1550 mm
Maximum panel length	6000 mm <sup>(1)</sup>
Panel thickness	25 mm
Joint width	10 mm
Cavity	Min. 10 mm
Available finishes & materials	See page 4

<sup>(1)</sup> Larger panels on request

Project : Helicon Education, 's-Hertogenbosch, The Netherlands  
 Architect : SP Architecten / Architecten aan de Maas  
 Product : QuadroClad® QC300 Vertical



## HUNTERDOUGLAS® QC300 PANEL PARTS



QC300 Panel  
C405560000



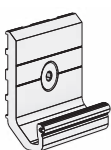
Mini rail  
C782260000

## ASSEMBLED ELEMENTS

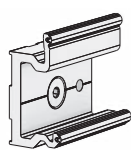


QC300 Panel

## HUNTERDOUGLAS® RAIL AND CLAMPS



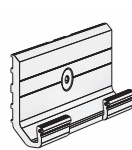
Bottom fixing  
plate mid  
C781490000



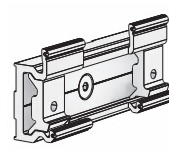
Centre fixing  
plate mid  
C781710000



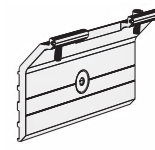
Top fixing  
plate mid  
C781750000



Bottom fixing  
plate joint  
C781480000

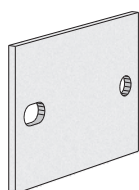


Centre fixing  
plate joint  
C781700000

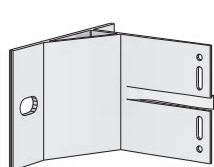


Top fixing  
plate joint  
C781740000

## SUBSTRUCTURE EXAMPLE (Non-HD)



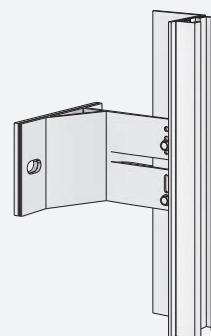
Insulation bracket



Wall bracket



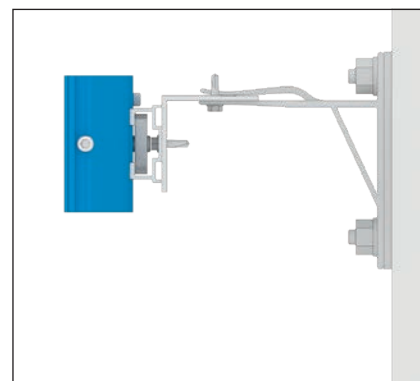
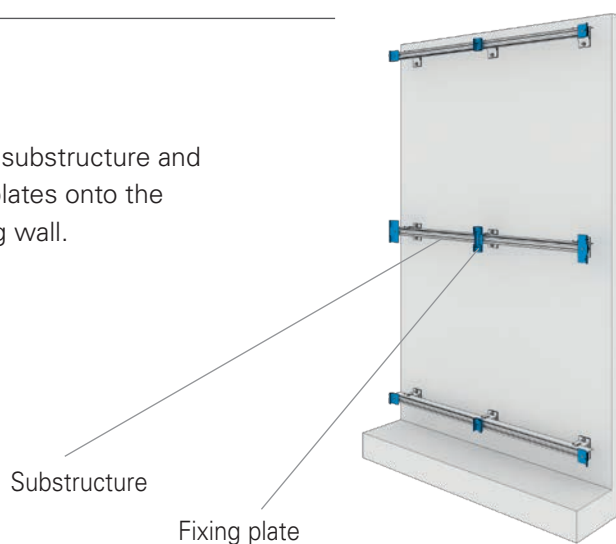
L profile



Substructure

**INSTALLATION\*****STEP 1**

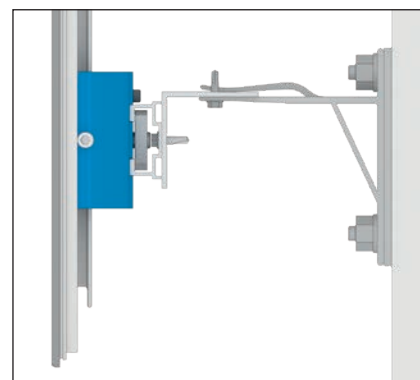
Mount substructure and fixing plates onto the existing wall.



*Bottom fixing*

**STEP 2**

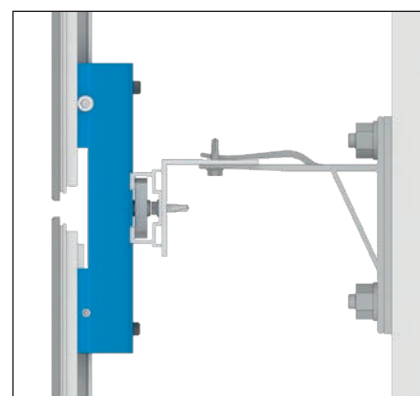
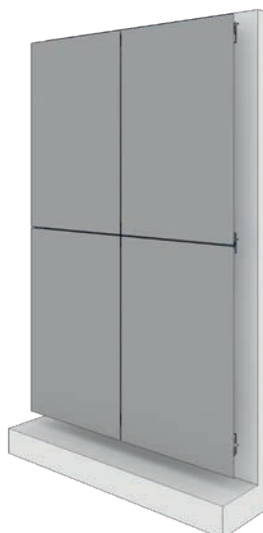
Lock the panels onto the fixing plates using the integrated retainers.



*Panel hooked onto the bottom fixing*

**STEP 3**

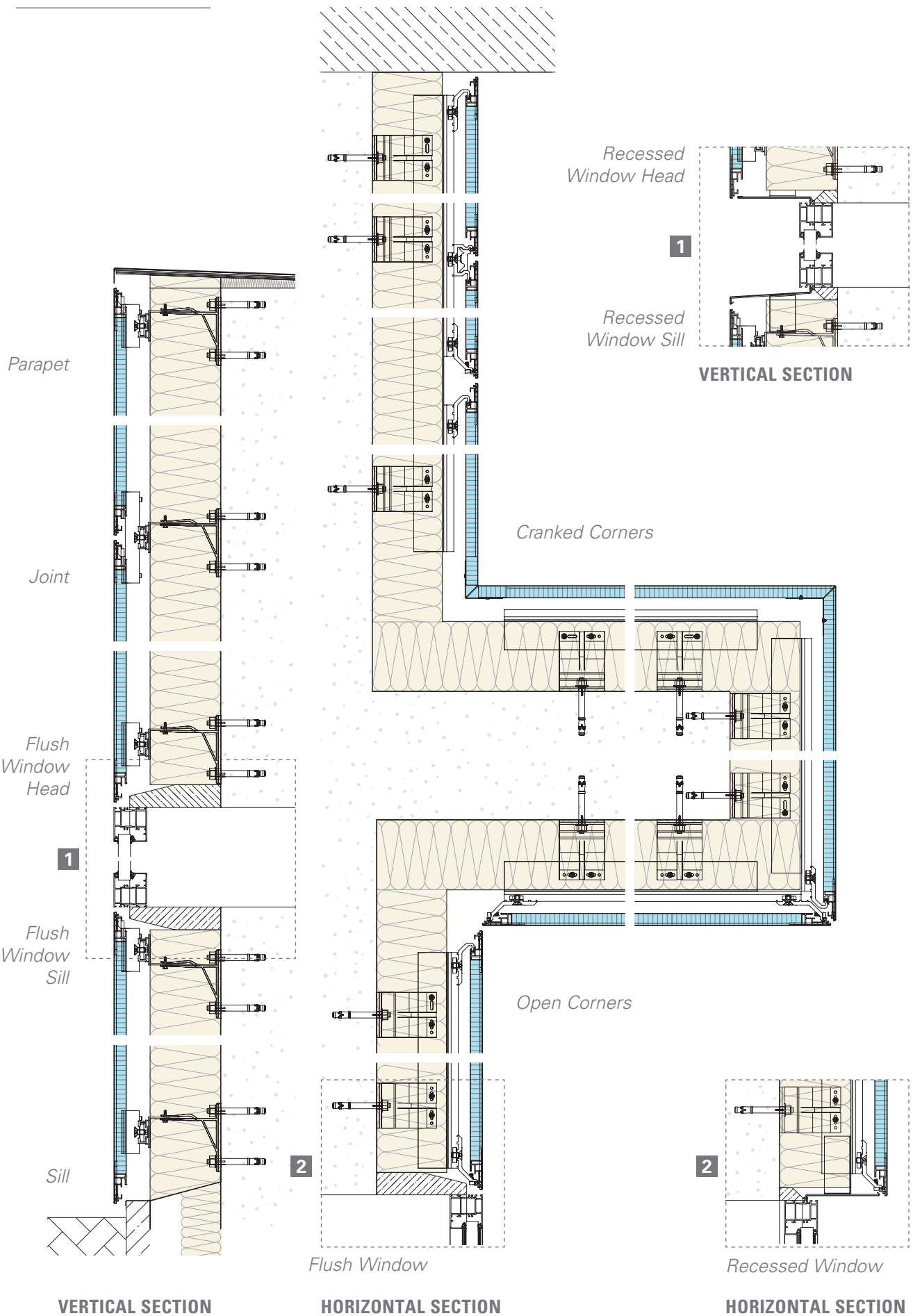
Repeat the process by fixing the panels.



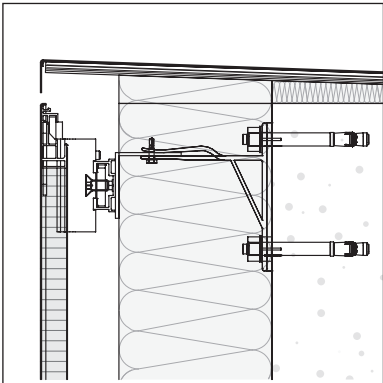
*Centre fixing*

\* For detailed technical information please download our installation manual from the website.

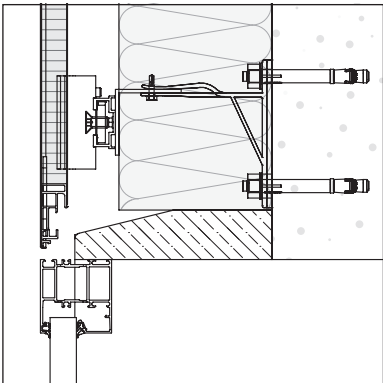
## QC300 SYSTEM DETAILS



DETAILS

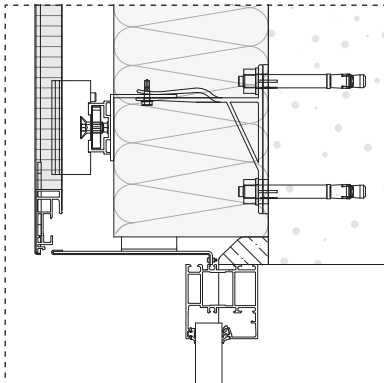


*Parapet*

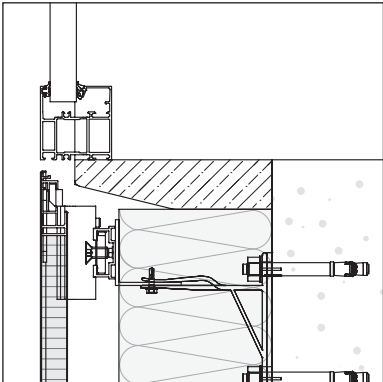


*Flush Window Head*

*Flush or Recessed Window Head*

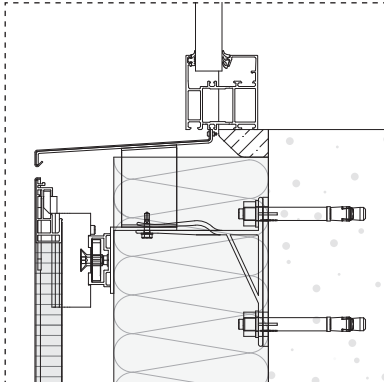


*Recessed Window Head*

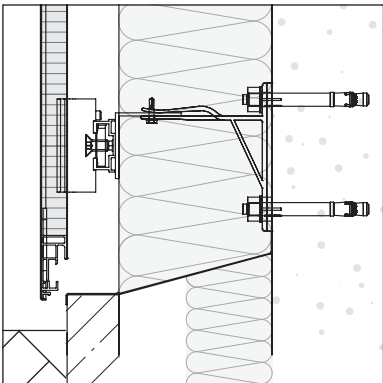


*Flush Window Sill*

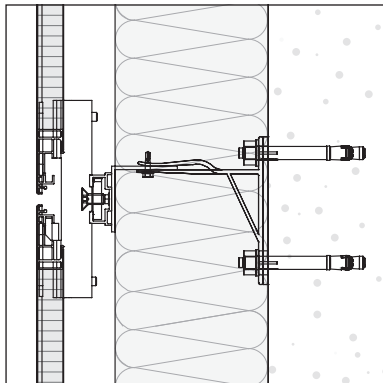
*Flush or Recessed Window Sill*



*Recessed Window Sill*

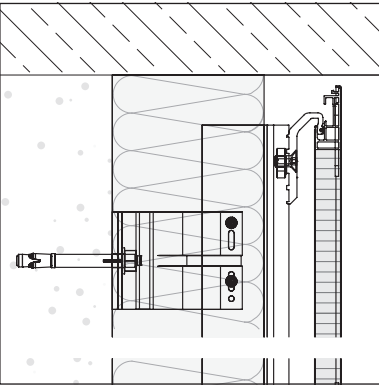


*Sill*

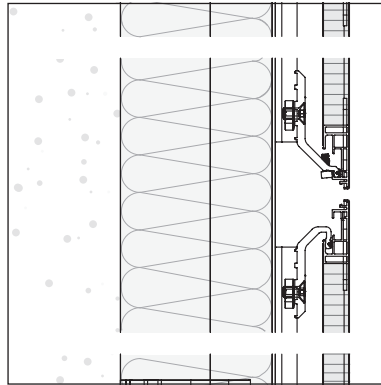


*Horizontal Joint*

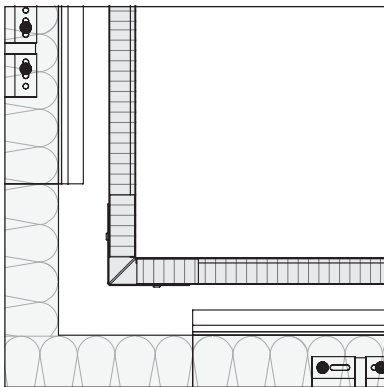
VERTICAL SECTION



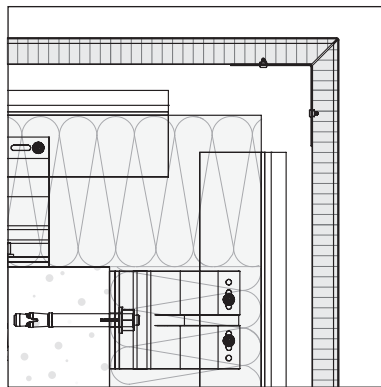
*Wall Jamb*



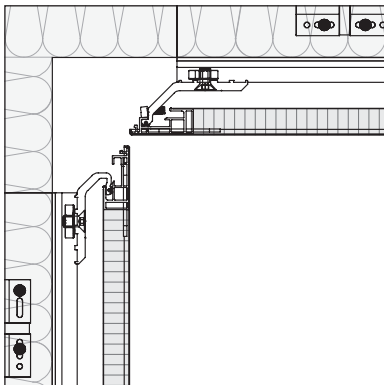
*Vertical Joint*



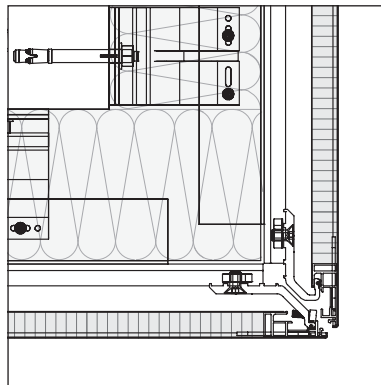
*Cranked Corner Inside*



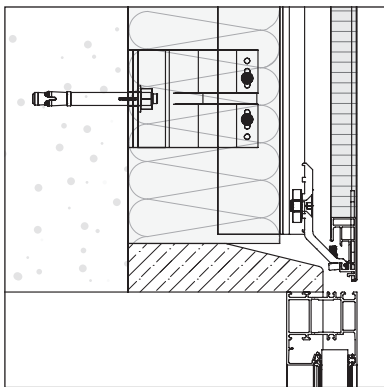
*Cranked Corner Outside*



*Open Corner Inside*

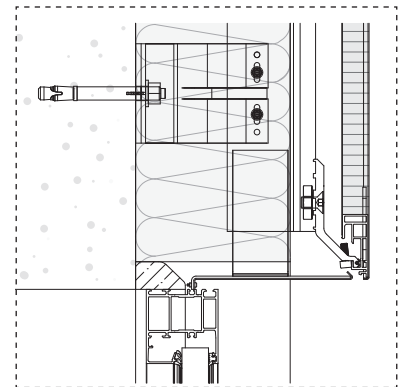


*Open Corner Outside*



*Flush Window*

*Flush or Recessed Window*



*Recessed Window*

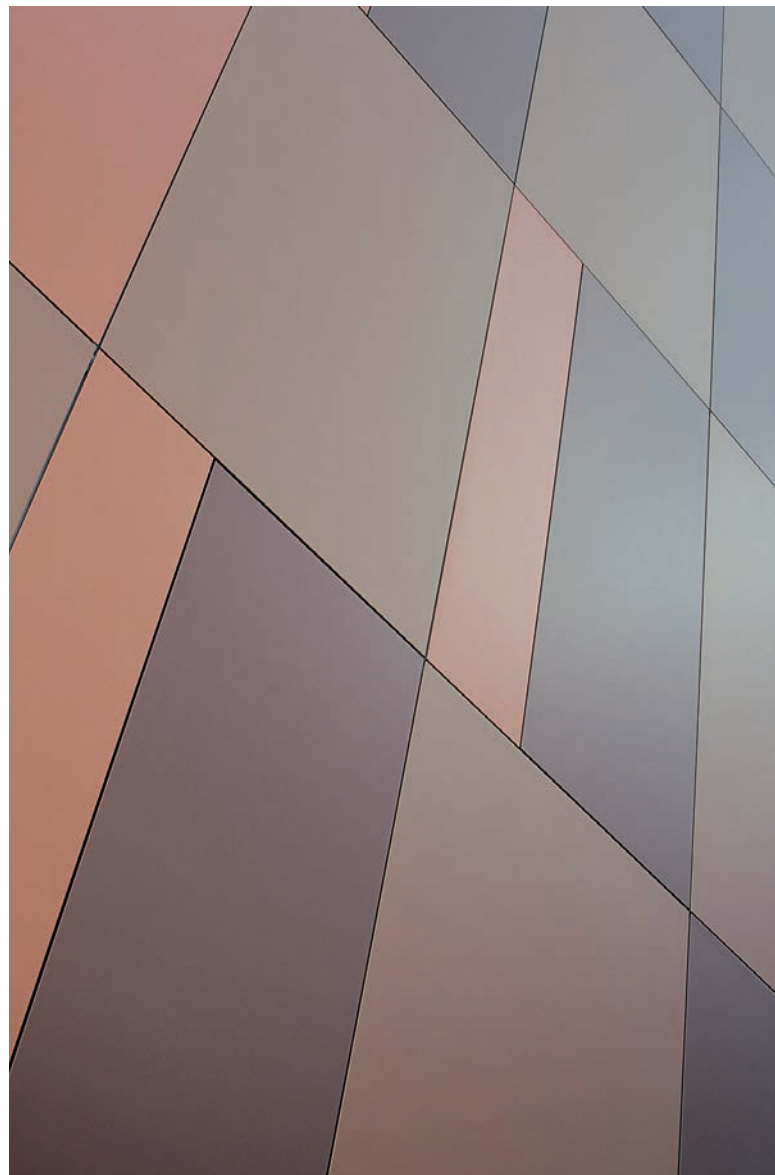
## HORIZONTAL SECTION



# Designed to work for you

**Hunter Douglas is a global player within the field of modern architecture. We understand the conflict between form and function better than anyone, and enrich the market with inspiring solutions that strengthen the aesthetic appeal of buildings and their functionality in terms of indoor climate, energy use and acoustics.**

We develop clever and aesthetically appealing solutions in collaboration with architects and designers to control heat, light, sound and energy. We are also inspired by real-world challenges and ideas as well as developments in technology and materials. All our products are thought out in great detail to make a difference to both architects and end users.



© Registered trademark of Hunter Douglas - a HunterDouglas® product.  
© Copyright Hunter Douglas 2018. No rights may be derived from the text or the illustrations or examples accompanying the text. Materials, parts, compositions, designs, versions, colours and the like may differ without prior warning.



Printed on  
EU Ecolabel-  
certified paper



▲ Sun Louvres



▲ Ceilings

Façades ▼



## Architectural services

We support our business partners with a wide range of technical consulting and support services for architects and installers. We assist architects and developers with recommendations for materials, shapes, dimensions, colours and finishes. We also help create design proposals, visualisations and technical drawings. Our services to installers range from providing detailed installation drawings and instructions.

## More information

Contact our **Project Support** for further help and advice on the design possibilities our applications can create.

**+31 (0)594 - 55 33 33**

Visit our website:

**[www.hunterdouglasarchitectural.eu](http://www.hunterdouglasarchitectural.eu)**

Hunter Douglas products and solutions are specifically designed to improve the indoor climate and save energy. They create an environment that is pleasant, healthy, productive and sustainable.



Hunter Douglas aims to produce sustainable products. Our painting and aluminium smelting processes are regarded as setting the bar for the most important standards in clean production methods. All aluminium products are 100% recyclable at the end of their lifecycle.



Ceilings



Sun Louvres



Façades



Belgium  
Bulgaria  
Croatia / Slovenia  
Czech Republic  
Denmark  
France  
Germany  
Greece  
Hungary  
Italy  
The Netherlands  
Norway  
Poland  
Portugal  
Romania  
Russia  
Serbia  
Slovakia  
Spain  
Sweden  
Switzerland  
Turkey  
United Kingdom  
Africa  
Middle East  
  
Asia  
Australia  
Latin America  
North America

**Hunter Douglas Architectural**

Industriepark 17  
P.O. Box 128 - 9350 AC Leek, The Netherlands  
Tel. +31 (0)594 - 55 33 33  
E-mail: [facades@hde.nl](mailto:facades@hde.nl)  
[www.hunterdouglasarchitectural.eu](http://www.hunterdouglasarchitectural.eu)