

Designed to work for you

# Façade systems



**HunterDouglas**   
Architectural

# OUTSTANDING

HunterDouglas® Façades

# SUSTAINABLE PERFORMANCE

**Hunter Douglas Architectural collaborates with architects and designers around the world to create architectural products that meet the needs of each individual project. The results end up in our Façades, Ceilings, Sun Control and Window Coverings, not to mention support, from design development to post-installation service.**

Go ahead, judge a building by its cover. We'll help you specify rainscreen façades and cladding systems, making sure your project's first impression will be a lasting one.

## HISTORY HUNTER DOUGLAS



**1919** - Henry Sonnenberg founds his machine tool distribution, later manufacturing, company in Düsseldorf, Germany

**1933** - Henry uses 150 railroad cars to move his entire operation to Rotterdam, The Netherlands.

**1946** - Joe Hunter joins forces with Henry and develops new technology and equipment for the continuous casting and fabrication of lightweight aluminium... leading to the production of Venetian Blinds.

**1960** - Hunter Douglas expands into Europe, Australia and Latin America.

**1969** - Hunter Douglas stocks are first listed on the Montreal and Amsterdam Stock Exchanges.

**2000** - Hunter Douglas becomes market-leader in daylight regulation and solar heat control solutions.

**2007** - Two new companies join the Hunter Douglas Group - 3Form and NBK Architectural Terracotta. High design, high performance sustainable building solutions, extending Hunter Douglas' commitment to architectural products that are good for people and the planet.

**2016** - Hunter Douglas brings out any colour on zinc, whilst still maintaining the structural appearance of the material.



**16** SINGLE SKIN



**2** QUADROCLAD® SYSTEMS



**Over the last 50 years, Hunter Douglas Architectural has been the name behind some of the biggest developments in the areas of Façades, Sun Control, Ceilings and Window Coverings.**

Hunter Douglas Architectural products offer unparalleled design freedom. A wide range of choices are available with different materials, shapes, systems, coatings and colours, that can help turn design ideas into reality.

## PRODUCT HISTORY

- 1962 - 84R
- 1964 - Sandwich Wall
- 1973 - MPF 150 F
- 1975 - 70S/132S
- 1976 - MPF 300 T/U
- 1977 - MPF 200 F
- 1992 - QuadroClad® 36
- 1998 - QuadroClad® Europe
- 1999 - MPF 600
- 2011 - QuadroClad® Zinc
- 2014 - QuadroClad® 200

### Our façades systems offer:

- **Performance** - easy to adapt to specific project requirements.
- **Economic value** - highly durable, fast and efficient installation.
- **Green characteristics** - at the end of the façade lifecycle aluminium alloy is 100% recyclable.
- **Aesthetic product** - colours, shapes, and details offer unparalleled design freedom.
- **Ease of use** - demountable system that enables easy maintenance.

## CONTENT

### 2 QUADROCLAD® SYSTEMS

- > 4 QuadroClad® QC50
- > 6 QuadroClad® QC100
- > 8 QuadroClad® QC200
- > 10 QuadroClad® QC300
- > 12 QuadroClad® QC500
- > 14 QuadroClad® Renovation

### 12 SINGLE SKIN

- > 18 LinearClad™ F
- > 20 LinearClad™ T/U

### 18 OPEN STRUCTURE

- > 24 84R
- > 26 70S/132S

### 28 CUSTOMISED

- > 30 AuraWeave™
- > 32 Si-Clad™
- > 34 QuadroClad® Flex Fins

### 36 MATERIAL, FINISHES AND SURFACES

### 40 SERVICES

Cover : Sanmenxia Cultural & Sports Center, China  
 Architect : Liu Peng  
 Product : QuadroClad® QC300



Designed to work for you

# QUADROCLAD<sup>®</sup> SYSTEMS

*Outstanding looks, excellent functionality*



**The Hunter Douglas Architectural QuadroClad<sup>®</sup> façade system is a unique, open-jointed cladding system based on the principles of rainscreen façade technology. The lightweight skins are fused to a honeycomb aluminium core that provides extreme panel strength and flatness. They are engineered to deliver both outstanding looks and excellent functionality, QuadroClad<sup>®</sup> panels and components have been designed to perform in even the most challenging of environments and have been independently tested for corrosion resistance, fire resistance and wind-load performance.**

Custom shapes, curved and tapered panels, a variety of joint options and an extensive range of colours\* and different materials\* give you unparalleled creative freedom. Whatever the design shape or requirement, at Hunter Douglas we can produce it.

Every QuadroClad<sup>®</sup> façade system is made to measure and manufactured in a controlled factory environment. This process guarantees optimum performance with no waste or time consuming processes when on site.

*\*Please refer to pages 36 - 39 for colour and material inspiration*





### **Design features**

- Extreme flat panel surfaces.
- Large range of colours and skin materials.
- Design freedom.
- Ideal for renovation projects.
- Open, closed and contrasting joints possible.
- Corners are made to measure from one piece.

### **Technical features**

- Standard thickness of 25 mm.
- Lightweight - approximately 6.5 kg/m<sup>2</sup>.
- Extra-large panel modules up to 1500 x 6000 mm as standard.
- Superior quality and durability.
- Virtually maintenance free.
- Certified fire performance.
- Certified wind load performance.

### **Area of applications**

- Façades and external envelope.
- Self-supporting roofs.
- Dome shape buildings.
- Interior walls, ceilings and balconies.
- Canopies.
- For renovation of projects.

# QUADROCLAD® QC50

*High performance & made to measure*

**QuadroClad® QC50, our BASIC panel, is a high quality panel that can be fitted to almost any fascia of a building. It can be specified for both internal and external applications and fitted vertically or horizontally. QC50 is available in a range of natural materials, is lightweight and easy to install.**

QC50 is not just a cut honeycomb sheet, it is a high performance made to measure cassette produced out of two folded aluminium layers with an aluminium honeycomb core glued inside. This manufacturing process allows Hunter Douglas to offer almost any thickness of panel.

## QC50

### *Features*

- Variable in thickness.
- Fits a stunning range of natural materials.
- Applicable for exterior and interior (walls, ceilings) applications.
- A high quality panel, designed for both vertical and horizontal application.
- It is easy to fix and suitable for mounting to a lightweight substructure.



#### QC50

*Two folded aluminium layers with honeycomb core inside*



*Previous page:* Centre for Chemistry and Biomedicine,  
Innsbruck, Austria  
Architect : Din A4 Architecture  
Product : QuadroClad® QC300

*Above :* Lario Centre - Bennet, Tavernola, Italy  
Architect : Progetto CMR  
Product : QuadroClad® QC50



*Below* : Crossroad Office Building, San Diego, USA  
Architect: Open Studio Architectur  
Product : QuadroClad® QC50







# QUADROCLAD® QC100

*Coloured to create a more visual effect*

**QuadroClad® QC100 is our EASY panel, it's roll formed edge on two sides guarantees an easy installation when using the supplied fixing clamps. The clamp cover provides an optical 25 mm closed joint, which can be coloured to create an even more visual effect. The QC100 is both horizontal and vertical mountable and the unique combination of the roll formed edges and clamps makes QC100 ideally suited for projects with large self-supporting roofs.**

## QC100

### *Features*

- Easy installation due to the roll formed edges and fixing clamps.
- Suitable for large cladding projects (where same sizes are desirable).
- Closed (contrasting) joints possible for special effects.
- Ideal for vertical application.
- Suitable for self-supporting roofs.



*Above and left: Doha Convention Centre, Doha, Qatar  
Architect: Murphy/Jahn Architects LLC  
Product : QuadroClad® QC100*



### QC100

*Roll formed edges for easy installation*



*Above : Piata Charles de Gaulle, Bucharest, Romania  
Architect : Westfourth Architecture  
Product : QuadroClad® QC100*

# QUADROCLAD® QC200

*Accentuate the positive*

QuadroClad® QC200 is our **ULTIMATE** panel, it is a fully engineered panel with aluminum extrusion frames on four sides. Our specially designed extrusion top profile ensures easy screw fix installation on every substructure. The visual closed joint of the QC200 lays deeper, which creates a lifting effect and one that accentuates the visual appearance of each panel even more. Integrated channels provide ventilation that enable rain and condensation to drain behind the cladding surface, ensuring a much cleaner façade with lower maintenance costs.



## QC200

### Features

- Low installation depth.
- Fewer parts needed.
- Provided with a top profile for easy screw fix installation.
- A closed, ventilated joint.
- Individually removable.

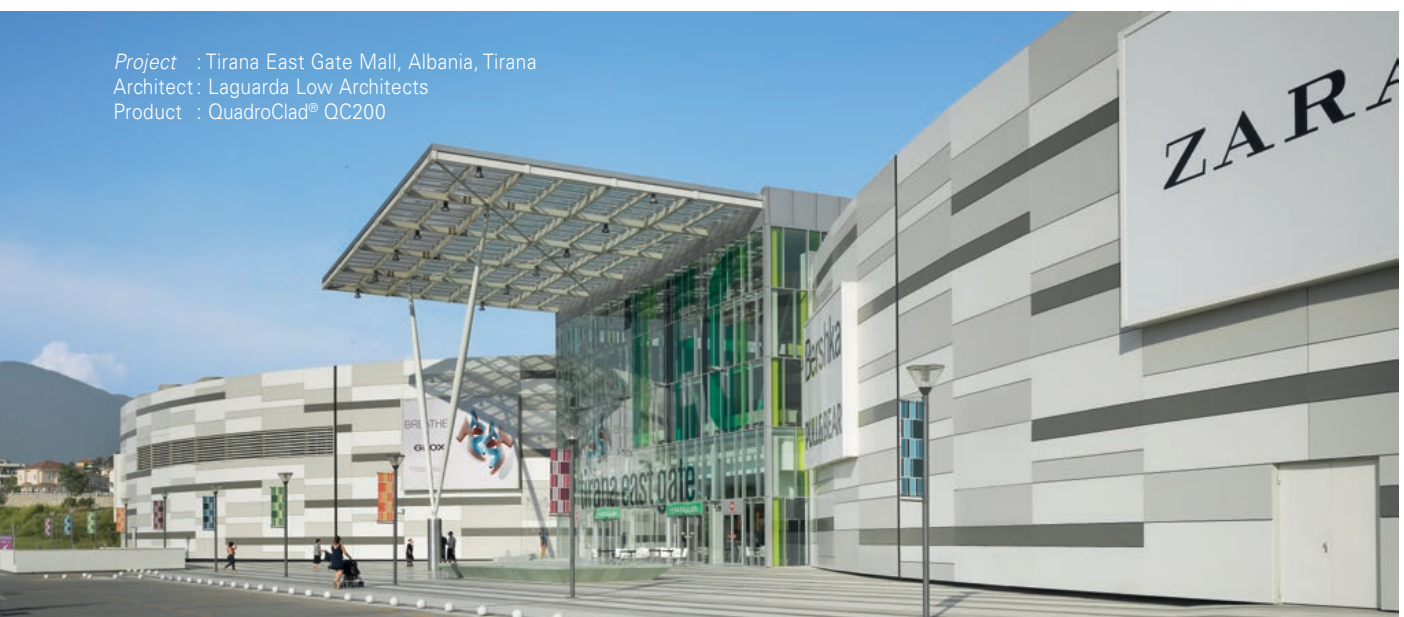
#### QC200

*Fully engineered extruded top profile*



Above : Fire Department, Bornem, Belgium  
Architect : Studio Klein Brabant  
Product : QuadroClad® QC200

Project : Tirana East Gate Mall, Albania, Tirana  
Architect : Laguarda Low Architects  
Product : QuadroClad® QC200







Project : Residential 209 Sullivan Street, New York, USA  
Architect : Rawlings Architects PC  
Product : QuadroClad® QC200



Project : Maastoren, Rotterdam, The Netherlands  
Architect : Dam en Partners Architecten  
Product : QuadroClad® QC300





# QUADROCLAD® QC300

*The most complete façade solution*

QuadroClad® QC300 is our COMPLETE system and as its name suggests is our most complete façade solution. It is an ideal external wall finish for larger elevated buildings such as high rise residential buildings and skyscrapers exposed to extreme weather conditions. QC300 features free hanging panels with a ventilated cavity, with open joints that are designed to reduce surface wind loads. Tall buildings by their very nature require a different level of technical specification and Hunter Douglas Architectural have developed a unique patented method of installation (including wall brackets, support rails and fixing plates) to meet these building's requirements.

## QC300

### *Features*

- High rise - unitised panels.
- Complete package, saves time in the building chain.
- Easy installation due to our patented substructure.
- Suitable for extreme technical requirements (windload).
- Individually removable.



Above : Helicon Education, 's-Hertogenbosch, The Netherlands  
Architect : SP Architecten / Architecten aan de Maas  
Product : QuadroClad® QC300



### QC300

*Specially designed  
aluminium extruded  
profile*



Above : Sberbank of Russia, Moscow, Russia  
Architect : Design Erick van Egeraat  
Product : QuadroClad® QC300

# QUADROCLAD® QC500

*An architect's dream*

**INFINITY, that's the word, which best describes our QuadroClad® QC500 panel. By using triangular and diamond shaped panels combined with a specially engineered integrated fixing system it is the perfect solution for dome shaped buildings.**

**This exceptional ventilated façade system allows designers to create stunning visual shapes that follow the contours and profile of a building's exterior.**

## QC500

*Features*

- The solution for dome shaped buildings.
- Easy installation due to our corner fixed substructure.
- Can be walked on for ease of maintenance.
- Suitable where extreme technical specification is required.
- Follows every contour of the building.



### QC500

*Extruded profiles  
encased between two  
folded aluminium layers*



Above : Shell Museum, Dalian, China  
Architect : The Design Institute of Civil Engineering & Architecture of DUT  
Product : QuadroClad® QC500



Project : Shanghai World Expo Culture Centre, Shanghai, China  
 Architect: East China Architectural Design and Research Institute  
 Product : QuadroClad® QC500



Designed to offer the architect a solution for any eventuality, QuadroClad® façade panels can be specified on a wide range of applications.

**Make a choice**

Best product application	QC50 Standard	QC100 Easy	QC200 Ultimate	QC300 Complete	QC500 Infinity
Canopies			✓	✓	
Dome shaped buildings					✓
Renovation	✓			✓	
Self-supporting roofs		✓			✓
Diagonal orientation		✓	✓		
Interior	✓		✓	✓	

# RENOVATION

*QuadroClad® The perfect partner for renovation projects*

Hunter Douglas Architectural is recognised throughout the world as an innovator of architectural products. This is particularly true in the development of new external wall façade systems where our QuadroClad® range has been specifically designed for use on renovation and refurbishment projects. Façade renovation of existing buildings is always an interesting topic and the new cost effective lightweight QuadroClad® range provides architects with the extra freedom to attractively upgrade and modernise a building's façade.



*Old situation*



*New situation*



*3D Impression*



*Project* : Crossroad Office Building, San Diego, USA  
*Architect* : Open Studio Architecture  
*Product* : QuadroClad® QC50





### Crossroads Renovation

The Mission Valley Crossroads project is a building exterior renovation project that replaces a failing 1970's brick tile cladding. The architect designed a new building exterior with both QC50 and ceramic cladding system. A new brand identity was created using the 404 address in combination with the vibrant orange colour.



### Kras Chocolate Company

The Kras Chocolate company wanted to renew their Headquarters in Zagreb Croatia by over cladding it's outdated 60's style building. The designers of Kras together with the team at Hunter Douglas designed a new layout with QC300, windows and external blinds. The signature red color which reflects the Kras brand color will identify the chocolate factory for many years to come.



*Old situation*



*3D Impression*



Project : Kras Chocolate Museum, Zagreb, Croatia  
 Architect : H2L2 Urban Concept  
 Product : QuadroClad® QC300



# SINGLE SKIN

*Fast and cost effective cladding solution*



**Our Single Skin systems provide an economical cladding and soffit solution without compromising on technical performance. Single Skin facades create smooth, flat or profiled surfaces that are ideal for new and refurbished projects. They are easy to install, are lightweight and available in a wide range of materials\*, colours\* and profiles. Single Skin systems are 'made to measure' to ensure optimum performance. They are particularly suited to large surface areas where colour combinations can be included to give added visual appeal.**

*\*Please refer to pages 36 - 39 for colour and material inspiration*

## **Design Features**

- Neat concealed joints present a smooth uninterrupted appearance.
- High strength - capable of withstanding high wind loads.
- Extensive range of colours and different materials.
- Made to measure - ensures optimum performance with no waste and time-consuming processes on site.
- Complete with engineered joint solutions - ensuring strength and weathering integrity.
- Horizontal, vertical or diagonal.



# SCO Extra



## Technical Features

- Different module widths possible.
- Different thicknesses depending on the application.
- Panel lengths made to measure up to 6000 mm.
- Fixing methods screw clamp or multicarrier.
- Resists high wind load.
- Roll formed tongue-in-groove system.

## Area of applications

- Façade and exterior ceiling.
- Sloping and curved facades, external soffits.
- Decoration of interior walls, ceilings and balconies.
- Cladding of tunnels.
- For renovation projects.

# LINEARCLAD™ T/U

*Perfect balance of style and performance*

**From high-rise structures to single story buildings LinearClad™ T/U provides a robust exterior solution. The flatness of the panels creates a beautiful smooth uninterrupted appearance achieved by adopting either a visually closed T joint or a punctuated U joint. The system resists high wind loads and includes cranked corners that are precisely integrated with the support systems. This unique façade system is available in a wide range of colours, materials and finishes. The panels are made to measure and can be supplied in any length from 800 up to 6000 mm.**

## LinearClad™ T/U

### *Features*

- Flat modules from 150 up to 600 mm.
- Roll formed tongue-in-groove system.
- Practical system solutions to suit many facade designs.
- Endless possibilities for combining colours, materials and finishes.
- Horizontal, vertical and diagonal applications.



#### LinearClad™ T/U

*Two different joint types possible. Roll formed tongue-in-groove*



Above : Villa Materada, Istria, Croatia  
Architect : Mr Davor Matekovic  
Product : LinearClad™ T and Folding Shutters



Above : TatraCity, Bratislava, Slovakia  
Architect : Ľubomír Závodný  
Product : LinearClad™ U

Previous page: Tesco Superstore, Sheffield, UK  
Architect : Saunders Architecture + Urban Design  
Product : LinearClad™ T



*Below* : Holesovický Pivovar, Prague, Czech Republic  
Architect: CMC architect  
Product : LinearClad™ T - perforated





*Below* : Joaquin Turina Apartments, Barcelona, Spain  
Architect: Enric Perez and Joaquim Ballarin  
Product : LinearClad™ F





# LINEARCLAD™ F

*Lightly crowned panel*

**The LinearClad™ F Façade System is a low cost panel that is ideal for projects where budget is an overriding factor. LinearClad™ F panels are lightly crowned and slightly thinner than their T/U counterparts. They consist of 150 mm and 200 mm wide roll formed panels with a tight joint. The panels are made to measure and can be supplied in any length from 800 up to 6000 mm.**

## LinearClad™ F

*Features*

- Light crowned modules from 150 and 200 mm.
- Roll formed tongue-in-groove system.
- Perfect for low rise and interior projects.
- Optimised system for medium wind load.
- Large choice of colour possibilities.



*LinearClad™ F*

*Lightly crowned roll formed tongue-in-groove*



Above : Sunfilm Solar Factory, Großröhrsdorf, Germany  
Architect: IPRO Dresden  
Product : LinearClad™ F



Above : Weena Tunnel, Rotterdam, The Netherlands  
Architect: Maarten Struijs  
Product : LinearClad™ F



# OPEN STRUCTURE

*Aesthetically strong and highly functional*

The Hunter Douglas Architectural Open Structure Façade system provides architects with an opportunity to design a cladding system that creates a visually crisp, clean and dynamic finish to a building's facade. Traditionally built with linear panels, Open Structure Façade systems enable light and air to travel through the system whilst maintaining excellent acoustic performance. The aluminium panels are extremely light and the integrated support structure allows both horizontal and vertical installations. They are ideal for use in a number of applications, including ventilated panels around mechanical systems such as cooling units, in front of open staircases or against ventilated walls.

## Design Features

- Optimised support structure allowing a variable panel pitch.
- System projected horizontally or positioned vertically.
- Available in a wide range of colours\*.
- Curved to follow the shape of the building.
- Connecting panels can create long linear runs.
- Ideal for external ceiling applications.

## Area of applications

- Façades or Sun Control systems.
- Elevations in front of 'open' staircases.
- Ventilated walls.
- To conceal air conditioning.
- For large cladding projects.

Project : Ster Shopping Mall, Szczecin, Poland  
Architect : MAAS  
Product : 84R

*\*Please refer to pages 36 - 39 for colour inspiration*







# 84R

*An elegant and light appearance*

**The Hunter Douglas Architectural panel system 84R consists of 84 mm wide roll formed round edge panels, which can be simply clicked to the carrier system to form eye catching horizontal or vertical lines.**

84R are roll formed panels made of aluminium, with smooth round edges that provide an elegant and light appearance. Depending on the chosen carrier there is an open joint between the panels, which can be closed using reverse panels or joint profiles to create a visually closed façade.

## 84R

*Features*

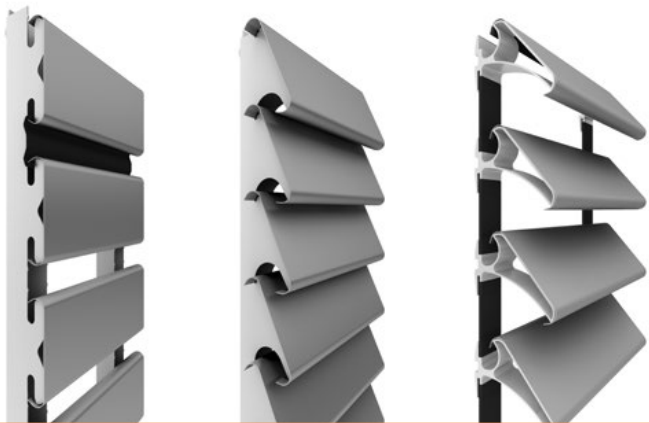
- Made to measure from 800 mm up to 6000 mm, panels can be joined by using the panel slice.
- A range of standard carriers to create different appearance.
- Open joint system can be created for profiles requiring open areas for ventilation and acoustics.
- Curved facades can be achieved using 84R curved panels.
- Wide range of Luxacote finishes.



Above : Rondo Shopping Mall, Bydgoszcz, Poland  
Architect: MAAS  
Product : 84R

### 84R

*Roll formed aluminium with a strong aesthetic appearance*



V6 carrier

H3 carrier

SLR10 rail  
with brackets



Above : Focus Park Shopping Centre, Bydgoszcz, Poland  
Architect: MOFO Architekci  
Product : 84R



*Below* : Explora Business Centre, Prague, Czech Republic  
Architect: Atelier ABD  
Product : 84R







Above : Once Offices, Toledo, Spain  
Architect: Luis Davila  
Product : 132S



# 70S / 132S

*A crisp façade or Sun Louvre feature*

The 70S/132S system consists of sturdy Z-shaped panels that can be combined together to create a stunning visual line to a building's exterior façade or sun louvre feature. Both 70S/132S panels incorporate a range of carrier systems with special brackets and spacers. Clever specification of colours and depths allow the designer to create unusual running lines and shading angles across a building's external envelope.

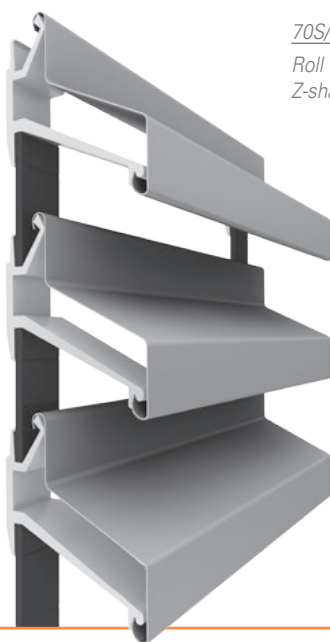
## 70S/132S

*Features*

- Z shaped panel 70/132 mm high.
- Optimised support structure allowing a variable panel pitch.
- Extremely light roll formed panel.
- Highly flexible corner solutions.
- Optimum shading performance.



Above : Riverloft Apartments, Budapest, Hungary  
Architect : KÖZTI Architects & Engineer  
Product : 132S



70S/132S  
Roll formed  
Z-shaped panels



Above : Kielce Fiar Kielce, Poland  
Architect : BSOP  
Product : 132S



# CUSTOMISED

*An opportunity to set the trend in wall finishes*

**Meeting the aspirations of today's busy specifier is where Hunter Douglas Architectural excels.**

The knowledge and expertise we have gleaned from working with some of the world's leading architects and designers, gives us a head start over many of our competitors when it comes to customised facade solutions. At Hunter Douglas we encourage our clients to think "Outside the Box" and challenge us to create new concepts and systems\*. Many of the external wall systems we offer as standard today, started out life as a customised project.

An enviable reputation for excellence in engineering and creativity plus a willingness to cooperate with suppliers across the building process has enabled Hunter Douglas to set the trend in the delivery of wall finishes.

Project : MET 3, Miami, USA  
Architect : Nichols Brosch Wurst Wolfe & Associates  
Product : AuraWeave™ - Customised

*\*Please refer to pages 36 - 39 for colour and material inspiration*





WHOLE  
FOODS<sup>®</sup>  
M A R K E T

The image shows a large, modern building facade with a complex, geometric pattern of grey panels. The pattern consists of rectangular panels arranged in a staggered, grid-like fashion, creating a textured, three-dimensional effect. The panels are set against a clear blue sky. In the foreground, there are palm trees and a black street lamp. The sign is mounted on a white, rectangular section of the building's facade.



# AURAWEAVE™

*Endless design possibilities*

**AuraWeave™ is a unique facade system that integrates metal, strips, pressings and perforated panel designs into one unitised element. This style of facade panel is particularly suited to buildings such as, car parks, stadia, arena and other open air environments where natural ventilation is required. The panels give the appearance of being optically closed when in fact they can be designed to be over 50% open. This flexibility in the design process allows architects to create amazing finishes to stale or unimaginative buildings such as concrete or structural steel edifices.**

## AuraWeave™ *Features*

- Design - Create your own façade.
- Made to measure - ensures optimum performance with no waste and time-consuming processes on site.
- Create a unique and timeless appearance.
- Endless possibilities for combining colours, materials and finishes.
- Resistant to extreme high windloads.



Above : District 36, Miami, USA  
Architect : ADD Inc Architecture + Design  
Product : AuraWeave™ - Customised



Above and right: MET 3, Miami, USA  
Architect : Nichols Brosch Wurst Wolfe & Associates  
Product : AuraWeave™ - Customised









*Project* : Emergency Medical Services (EMS), Baton Rouge, USA  
*Architect*: Remson | Haley | Herpin Architects  
*Product* : Si-Clad™



# Si-CLAD™

*Enhanced design possibilities with a range of colours and patterns*

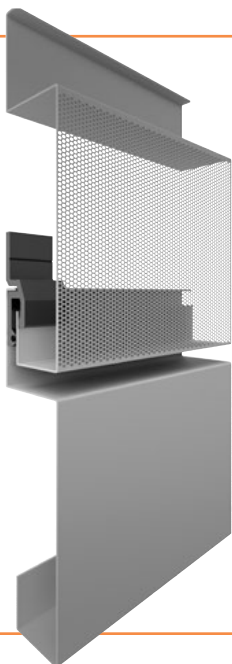
**The Hunter Douglas Architectural Si-Clad™ Façade System is an open joint cladding system that is based on ventilated façade technology. Screw fix installation of the roll formed single skin cassettes is made easy by using a universal profile which lock each panel into place. This quick method of installation is unique and has been specifically designed to save time on site.**

The Si-Clad™ system forms a smooth and crisp surface with simple and easy detailing. The architect can choose from an extensive range of colours and materials\* to further enhance the visual appearance of their project. This unique system is ideal for both high and low rise buildings. A choice of perforated design options encourages the designer to create a decorative and functional finish to the building.

## Si-CLAD™

### *Features*

- Tightly controlled joints - no adjustment necessary after hooking panels on to the substructure.
- Endless possibilities for combining colours, materials and finishes.
- Create different appearances with perforated panels (cladding, infill, curtain walling and external ceiling tiles)
- Applicable for both exterior and interior applications (walls, soffits etc.).
- Made to measure.



*Si-Clad™  
Universal profile  
which lock each  
panel into place*

*\*Please refer to pages 36 - 39 for colour and material inspiration*



# QUADROCLAD® FLEX FINS

## *Sun Control Fins*

**The Hunter Douglas range of QuadroClad® Flex Fins are exceptionally strong, flat and lightweight. They comprise of pre coated aluminium skins bonded to an expanded aluminium honeycomb core and can be manufactured in a variety of thickness, size and shape which can be curved and folded.**

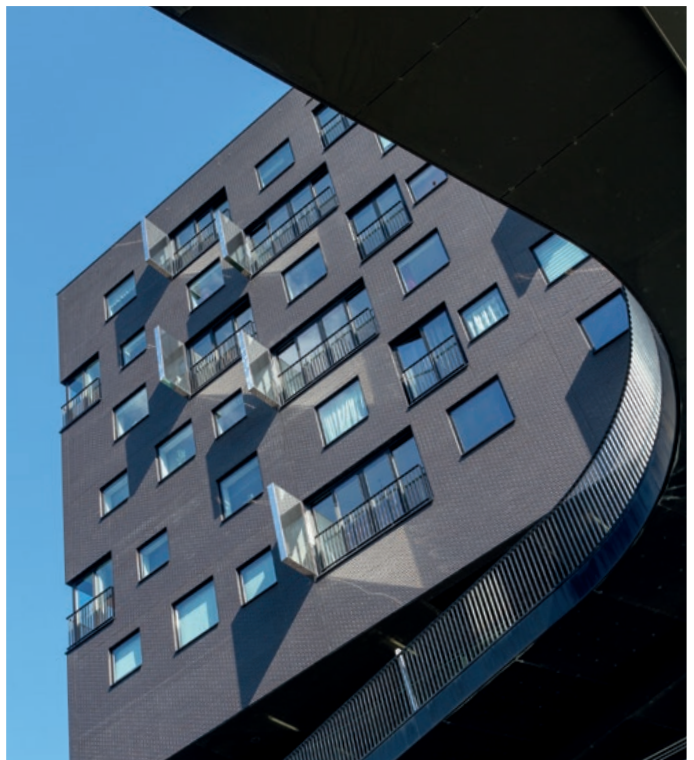
QuadroClad® Flex Fins are extremely rigid, they may be spanned horizontally and vertically and can be fixed to a variety of sub frames. Installation can also be independent of the façade construction with fins engineered to be fitted during or after the build process.



## QC Flex Fins

### *Features*

- Quick installation methods with minimum fixings to the building structure.
- Inherent strength of honeycomb panel requires limited number of supports.
- Large sun-shade fins can be created.
- High strength capable of withstanding high wind loads.
- Available in a range of standard and customised colours.
- No thermal bow in fins by solar radiation due to honeycomb construction.



*Right* : Osijek Civil Engineering University, Osijek, Croatia  
Architect: Arhitektonska Radionica Peracic & Studio Normala  
Product : QC Flex Fins

*Above* : La Liberté, Groningen, The Netherlands  
Architect: Dominique Perrault Architecture  
Product : QC Flex Fins







# MATERIAL, FINISHES

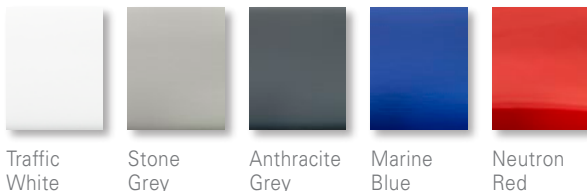
*Colour the skyline with a sparkling finish*

## AND SURFACES

**Buildings are defined by form and design. Often they are the product of an architect's inspirational vision. At Hunter Douglas our mission is to help designers realise that vision, by providing them with a palette of colours, materials and surface finishes that will inspire their creativity.**

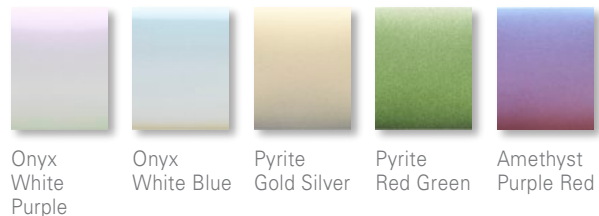
### Solid Colours

Take 5 seconds to imagine a world without colour. Aluminium can be coated in any (RAL, BS, NCS) colour. Colours are available in different gloss units as well as high gloss and matt finishes. At Hunter Douglas Architectural we aim to lead the way in colour trend development.



### Sparkling Mica

This range is tailored to create distinctive buildings, which attract attention. These innovative dual-tone finishes contain "mica" coating pigments, which reflect their own colour or the basecoat colour. This reflection and refraction of light causes a colour variation that changes upon viewing angle and incidence of light which can create a myriad of fascinating colours.



*Above* : Tesco Superstore, Sheffield, UK  
Architect: Saunders Architecture + Urban Design  
Product : LinearClad™ T



*Above* : Caja Rural de Jaén, Jaén, Spain  
Architect: Juan de Corro García-Lomas  
Product : QuadroClad® QC300



# Natural - Anodised aluminium

Anodising is an electrochemical process that converts the metal surface into a decorative, durable corrosion resistant finish. It is ideally suited to aluminium and the Hunter Douglas range of anodised colours are designed to enhance this finish. Available in a number of colours, ranging from silver and champagne to bronze and black, this enduring treatment improves the strength and aesthetics of aluminum cladding. It also provides easy maintenance and long life in any condition.



Bright Brushed    Anodized Brushed    Champagne Brushed    New Gold Brushed    Redzinc Brushed



Above : Maastoren, Rotterdam, The Netherlands  
 Architect: Dam en Partners Architecten  
 Product : QuadroClad® QC300

# Amazing Metallic

Hunter Douglas and their partners are at the forefront of developing a wide range of exciting metallic gloss finishes. Delivering these stunning finishes encourages designers to create an amazing visual appearance to any building's façade.



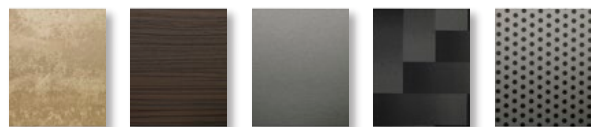
Brilliant Silver Metallic    Brilliant Champagne Metallic    Dark Anthracite Metallic    Pearl Beige Metallic    Dark Copper Metallic



Project : Mahler 4 Building, Amsterdam, The Netherlands  
 Architect: Toyo Ito and Associates  
 Product : QuadroClad® QC300

# Designs and specials

If none of the existing colours match the ideas or design criteria, then our finishing department will work with the architect to create a custom colour, finish or special effect that will deliver the finish they require.



Travertin Classic    Royal Wengè    Titanzinc Futura    Carbon Zoom    Perforated Metal

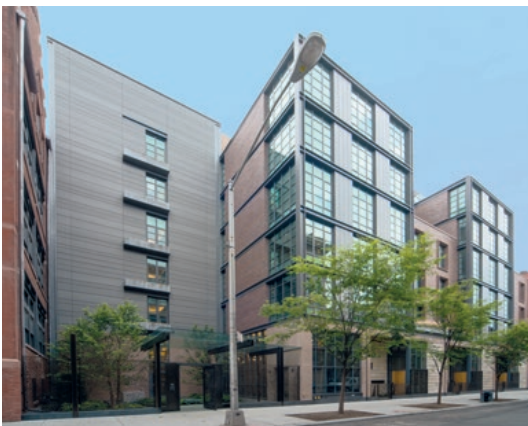
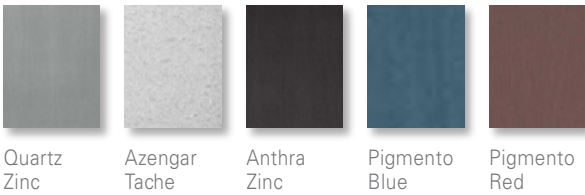


Above : Distributie Centrum The Sting, Tilburg, The Netherlands  
 Architect: Van Oers Weijers Architecten  
 Product : QuadroClad® QC300



# Zinc

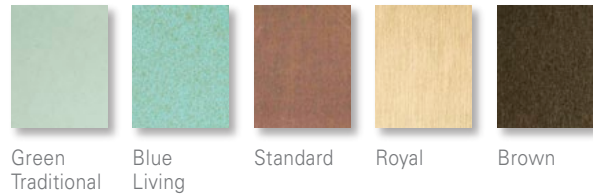
Architects are increasingly turning to zinc for its, maintenance-free long life and adaptability to various design styles. Hunter Douglas Architectural have a standard range of natural zinc, preweathered zinc and engraved zinc. The latest development allows the designers to experiment with almost any colour on zinc, whilst still maintaining the structural appearance of the material.



Above : Residential 209 Sullivan Street, New York, USA  
Architect : Rawlings Architects PC  
Product : QuadroClad® QC200

# Copper

Copper was one of the first metals used by man. It is one of our oldest building materials, with unique properties and characteristics. Copper has earned a respected place in the related fields of architecture and is gaining great popularity in world architecture. The natural development of copper patina is one of its unique characteristics.

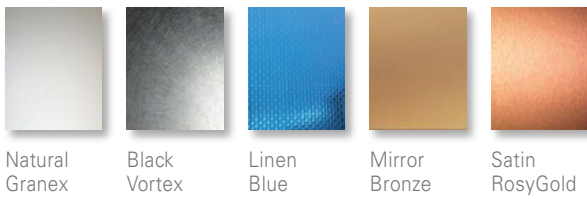


Above : Canadian Embassy, Bucharest, Romania  
Architect : Westfourth Architecture  
Product : LinearClad™ T



# Stainless steel

Stainless steel offers the ideal combination of high strength, excellent corrosion resistance and a modern, progressive image. Stainless steel has a unique aesthetic advantage when specified on a project as it will remain in perfect condition throughout the buildings life.



Above : Dane Residence, California, USA  
 Architect: Marmol and Radziner Architecture + Construction  
 Product : QuadroClad® QC200

# Weathering steel

Weathering steel, better known as Corten, is a beautiful cladding material that naturally rusts over time. Corten offers superior resistance to atmospheric corrosion because of its protective layer, which develops and regenerate.



Above : Residential, Santiago, USA  
 Architect: Boza Arquitectos + Durruti-Vergara Arquitectos'  
 Product : LinearClad™ T



# HUNTER DOUGLAS

## ARCHITECTURAL

**Hunter Douglas is a publicly traded company with activities in more than 100 countries with over 150 companies. The origin of our company goes back to 1919, in Düsseldorf, Germany. Throughout our history, we have introduced innovations that have shaped the industry, from the invention of the continuous aluminium caster, to the creation of the first aluminium Venetian blinds, to the development of the latest high-quality building products.**

Today we employ more than 16,500 people in our companies with major operation centres in Europe, North America, Latin America, Asia and Australia.



▲ WINDOW COVERINGS

SUN CONTROL ▼



▲ CEILINGS

FAÇADES ▼



Not only are the world's architects and designers our partners, they are our inspiration. They continue to raise the bar for excellence. We create products that help bring their visions to life: Window Coverings, Ceilings, Sun Control Systems and Façades.

## Designed to work for you

© Registered trademark - a HunterDouglas® product Pats. & Pats. Pend. - Technical data subject to change without notice. © Copyright Hunter Douglas 2017. No rights can be derived from copy, text pertaining to illustrations or samples. Subject to changes in materials, parts, compositions, designs, versions, colours etc., even without notice. **MX012F00**



PARTICIPANT





### ARCHITECTURAL SERVICES

We support our business partners with a wide range of technical consulting and support services for architects, developers, and installers. We assist architects and developers with recommendations regarding materials, shapes and dimensions, colours and finishes. We also help create design proposals, visualisations, and installation drawings. Our services to installers range from providing detailed installation drawings and instructions to training installers and advising on the building site.



#### Unprecedented Protection



for exterior application

*Our proprietary coil-coating process ensures Hunter Douglas Façades receives a superb finish. Independent tests have proven the excellent performance characteristics of Luxacote®. The topcoat contains a solid UV filter that guarantees perfect colourfastness and gloss stability. The topcoat also offers better resistance against scratches with a structure that resists and masks any minor damage that may occur during installation, resulting in a high abrasion resistance. The alloy and pre-treatment also offers optimal resistance to corrosion.*

## Learn More

- Contact our Sales office
- [www.hunterdouglasarchitectural.com](http://www.hunterdouglasarchitectural.com)



Printed on  
EU Ecolabel  
certified paper



*Hunter Douglas products and solutions are designed to improve indoor environmental quality and conserve energy, supporting built environments that are comfortable, healthy, productive, and sustainable.*



*Our paint and aluminium melting processes are considered to be one of the industry standards in terms of clean production processes. All aluminium products are 100% recyclable at the end of their lifecycle.*



Window Coverings  
Ceilings  
Sun Control  
Façades



- Belgium
- Bulgaria
- Croatia / Slovenia
- Czech Republic
- Denmark
- France
- Germany
- Greece
- Hungary
- Italy
- The Netherlands
- Norway
- Poland
- Portugal
- Romania
- Russia
- Serbia
- Slovakia
- Spain
- Sweden
- Switzerland
- Turkey
- United Kingdom
- Africa
- Middle East
  
- Asia
- Australia
- Latin America
- North America